

Technical sheet :

# MT-X 1840

---



 **MANITOU**  
HANDLING YOUR WORLD

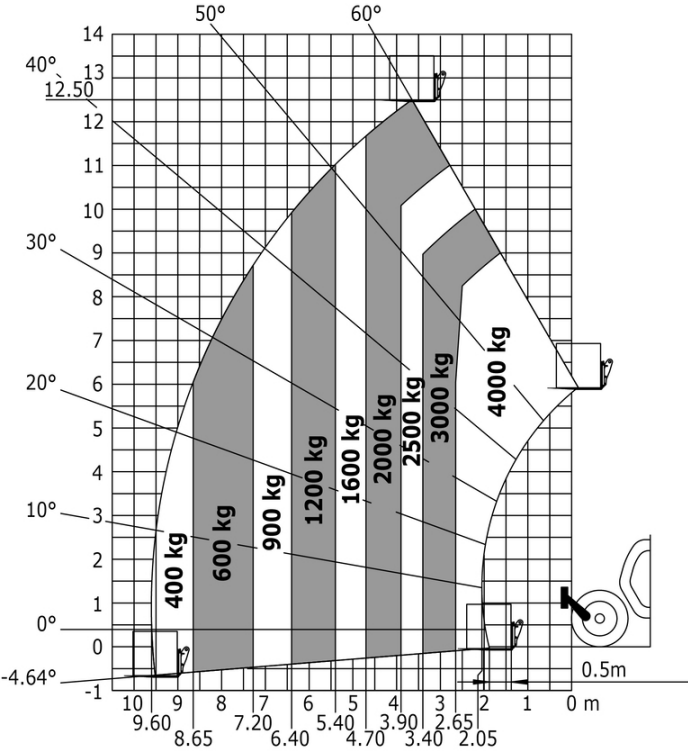
Capacities		Metric	Imperial
Max. capacity		4000 kg	8818 lb
Max. lifting height		17.55 m	57 ft 7 in
Maximum outreach		13.08 m	42 ft 11 in
Breakout force with bucket		7500 daN	7500 daN
Weight and dimensions			
Overall length to carriage	l11	6.16 m	20 ft 3 in
Length to face of forks	l2	6.27 m	20 ft 7 in
Overall width	b1	2.42 m	7 ft 11 in
Overall height	h17	2.45 m	8 ft
Wheelbase	y	3.07 m	10 ft 1 in
Ground clearance	m4	0.37 m	1 ft 3 in
Overall cab width	b4	0.89 m	2 ft 11 in
Tilt-up angle	a4	12 °	12 °
Tilt-down angle	a5	114 °	114 °
External turning radius (over tyres)	Wa1	3.94 m	12 ft 11 in
Unladen weight (with forks)		11630 kg	25640 lb
Overall weight		11600 kg	25574 lb
Tires type		Pneumatic	Pneumatic
Standard tires		Alliance 400/80 - 24 -162A8	Alliance 400/80 - 24 -162A8
Forks length / width / section	l / e / s	1200 mm x 125 mm x 50 mm	47 in x 5 in x 2 in
Performances			
Lifting		17.30 s	17.30 s
Lowering		12.70 s	12.70 s
Extension		16.10 s	16.10 s
Retraction		15.60 s	15.60 s
Crowd		5 s	5 s
Dump		4 s	4 s
Engine			
Engine brand		Perkins	Perkins
Engine norm		Stage IIIA	Stage IIIA
Engine model		1104D-44TA	1104D-44TA
Number of cylinders / Capacity of cylinders		4 - 4400 cm³	4 - 269 in³
I.C. Engine power rating - Power		101 Hp / 74.50 kW	101 Hp / 74.50 kW
Max. torque / Engine rotation		400 Nm @ 1400 rpm	295 ft/lbs @ 1400 rpm
Drawbar pull (Laden)		10000 daN	10000 daN
Transmission			
Transmission type		Torque converter	Torque converter
Number of gears (forward / reverse)		4 / 4	4 / 4
Max. travel speed		24.90 km/h	15 mph
Max. travel speed (may vary according to applicable regulations)		24.90 km/h	15 mph
Parking brake		Automatic Negative Hand-brake	Automatic Negative Hand-brake
Service brake		Oil-immersed multi-discs braking on front & rear axles	Oil-immersed multi-discs braking on front & rear axles
Hydraulics			
Hydraulic pump type		Gear pump	Gear pump
Hydraulic flow / Pressure		167 l/min-270 bar	44 US gpm-3916 PSI
Tank capacities			
Engine oil		11.40 l	3 US gal
Hydraulic oil		135 l	36 US gal
Hydraulic tank capacity		175 l	46 US gal
Fuel tank		140 l	37 US gal
Noise and vibration			
Noise at driving position (LpA)		82 dB	82 dB
Noise to environment (LwA)		105 dB	105 dB
Vibration on hands/arms		< 2.50 m/s²	< 2.50 m/s²
Miscellaneous			
Steering wheels (front / rear)		2 / 2	2 / 2
Drive wheels (front / rear)		2 / 2	2 / 2
Cab certification		Cabin ROPS - FOPS level 2	Cabin ROPS - FOPS level 2
Controls		JSM	JSM

MT-X 1840 - Dimensional drawing

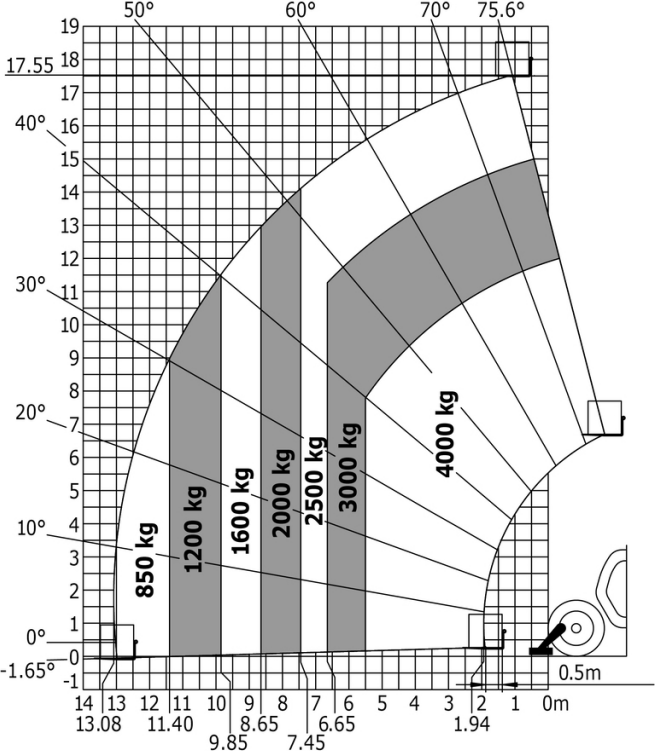


MT-X 1840 - Load chart

Machine on tires with forks - with levelling device Metric



Machine on lowered stabilisers with forks Metric





**Head Office**

B.P. 249 - 430 rue de l'Aubinière

44150 Ancenis Cedex - France

Tel: +33 (0)2 40 09 10 11 - Fax: +33 (0)2 40 09 10 97

[www.manitou.com](http://www.manitou.com)



This publication provides a description of the configuration versions and options for Manitou products, which may differ for equipment. The equipment presented in this brochure may be part of a series, as an option, or it may not be available, depending on the versions. Manitou reserves the right, at any time and without notice, to amend the specifications described and represented. The specifications provided do not bind the manufacturer. For more details, please contact your Manitou agent. This is not a contractually binding document. The presentation of the products is not contractually binding. List of specifications non-exhaustive. The logos as well as the visual identity of the company are owned by Manitou and cannot be used without authorisation. All rights reserved. The photos and diagrams contained in this brochure are only provided for consultation and information purposes.

MANITOU BF SA - Limited company with board of directors - Share capital: 39,668,399 euros - 857 802 508 RCS Nantes