

Technical sheet :

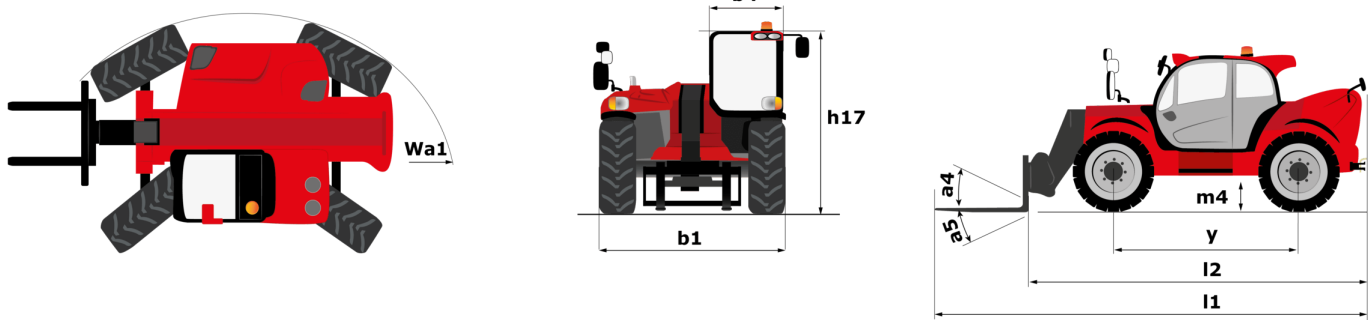
MHT 10180

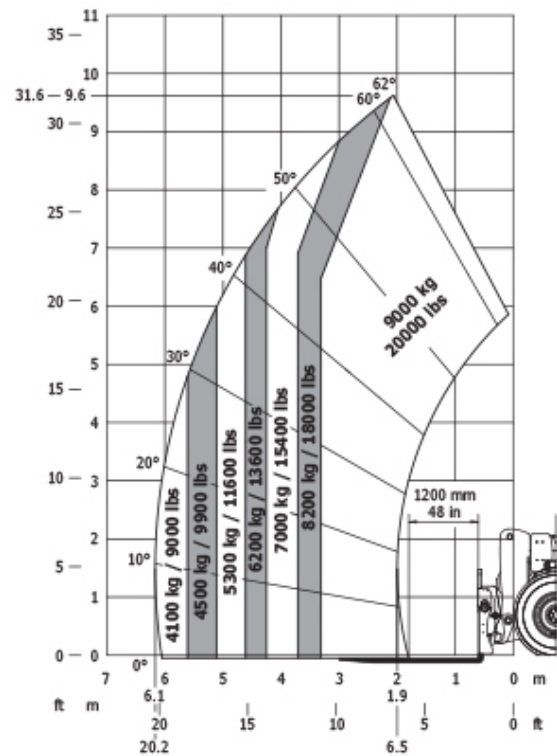


 **MANITOU**
HANDLING YOUR WORLD

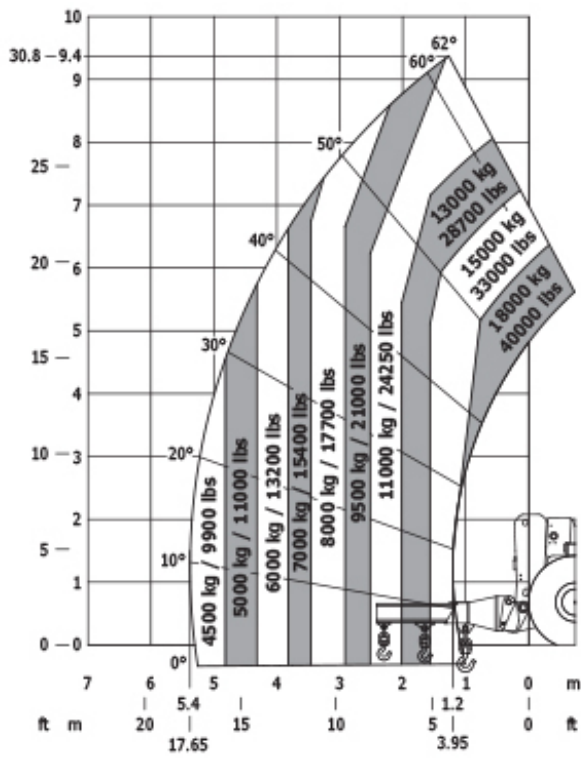
Capacities		Metric	Imperial
Max. capacity		18000 kg	39683 lb
Load center of gravity	c	600 mm	24 in
Max. lifting height		9.63 m	31 ft 7 in
Max. outreach		5.56 m	18 ft 3 in
Weight and dimensions			
Overall length	l1	6.65 m	21 ft 10 in
Unladen weight (with forks)		24000 kg	52911 lb
Ground clearance	m4	0.44 m	1 ft 5 in
Wheelbase	y	3.75 m	12 ft 4 in
Length to face of forks	l2	6.65 m	21 ft 10 in
Overall width	b1	2.52 m	8 ft 3 in
Overall height	h17	3 m	9 ft 10 in
Overall cab width	b4	0.93 m	3 ft 1 in
Tilt-down angle	a5	105 °	105 °
Tilt-up angle	a4	12 °	12 °
External turning radius (over tyres)	Wa1	5.50 m	18 ft 1 in
Outer turning radius (with forks)	b15	6.15 m	20 ft 2 in
Forks length / width / section	l / e / s	1200 mm x 200 mm / 80 mm	47 in x 8 in / 3 in
Frame leveling corrector	a9	10 °	10 °
Wheels			
Standard tires		Aeolus - 16.00 R25 Ain 46	Aeolus - 16.00 R25 Ain 46
Number of rear wheels		2	2
Steering wheels (front / rear)		2 / 2	2 / 2
Drive wheels (front / rear)		2 / 2	2 / 2
Steering mode		2 wheel steer, 4 wheel steer, Crab mode	2 wheel steer, 4 wheel steer, Crab mode
Engine			
Engine brand		Mercedes	Mercedes
Engine norm		Stage IV / Tier 4 Final	Stage IV / Tier 4 Final
Engine model		OM 934 LA. E4-3	OM 934 LA. E4-3
Number of cylinders / Capacity of cylinders		4 - 5100 cm³	4 - 311 in³
I.C. Engine power rating / Power		176 Hp / 129 kW	176 Hp / 129 kW
Max. torque / Engine rotation		750 Nm@1600 rpm	553 ft/lbs@1600 rpm
Engine cooling system		Water	Water
Number of batteries		2	2
Battery voltage		12 V	12 V
Drawbar pull		15970 daN	15970 daN
Transmission			
Transmission type		Hydrostatic	Hydrostatic
Number of gears (forward / reverse)		2 / 2	2 / 2
Max. travel speed		25 km/h	16 mph
Parking brake		Automatic Negative Hand-brake	Automatic Negative Hand-brake
Service brake		Hydraulic	Hydraulic
Gradeability (laden)		37 %	37 %
Hydraulics			
Hydraulic pump type		Variable pump	Variable pump
Hydraulic flow - Pressure		205 l/min - 350 bar	54 US gpm - 5076 PSI
Tank capacities			
Engine oil		21 l	6 US gal
Hydraulic oil		290 l	77 US gal
Fuel tank		315 l	83 US gal
Diesel Exhaust fluid (AdBlue® type)		63 l	17 US gal
Noise and vibration			
Noise at driving position (LpA)		80 dB	80 dB
Noise to environment (LwA)		107 dB	107 dB
Vibration on hands/arms		< 2.50 m/s²	< 2.50 m/s²
Miscellaneous			
Safety cab homologation		ROPS - FOPS level 2 cab	ROPS - FOPS level 2 cab
Controls		JSM	JSM

MHT 10180 - Dimensional drawing

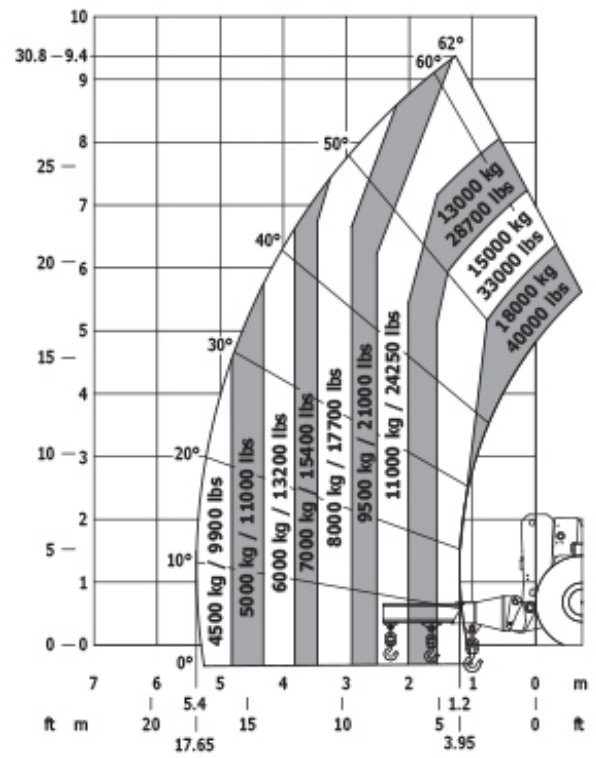




Machine on tyres with jib Metric



Machine on tyres with jib Imperial





Head Office

B.P. 249 - 430 rue de l'Aubinière

44150 Ancenis Cedex - France

Tel: +33 (0)2 40 09 10 11 - Fax: +33 (0)2 40 09 10 97

www.manitou.com



This publication provides a description of the configuration versions and options for Manitou products, which may differ for equipment. The equipment presented in this brochure may be part of a series, as an option, or it may not be available, depending on the versions. Manitou reserves the right, at any time and without notice, to amend the specifications described and represented. The specifications provided do not bind the manufacturer. For more details, please contact your Manitou agent. This is not a contractually binding document. The presentation of the products is not contractually binding. List of specifications non-exhaustive. The logos as well as the visual identity of the company are owned by Manitou and cannot be used without authorisation. All rights reserved. The photos and diagrams contained in this brochure are only provided for consultation and information purposes.

MANITOU BF SA - Limited company with board of directors - Share capital: 39,668,399 euros - 857 802 508 RCS Nantes