

Technical sheet :

# MT 1335

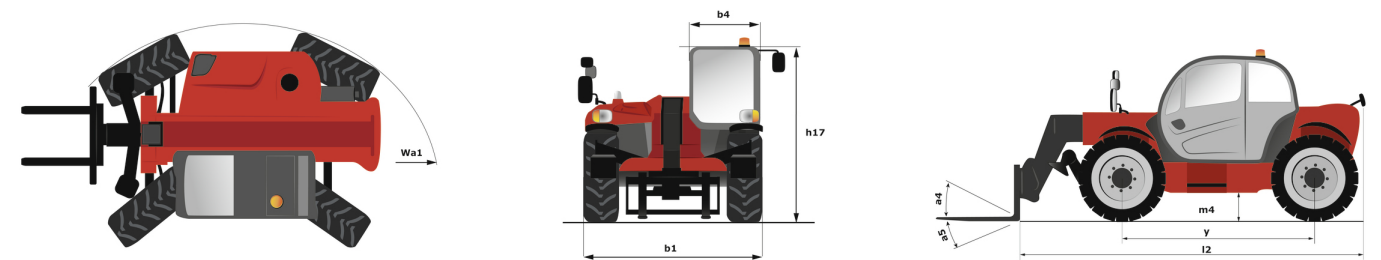
---



 **MANITOU**  
HANDLING YOUR WORLD

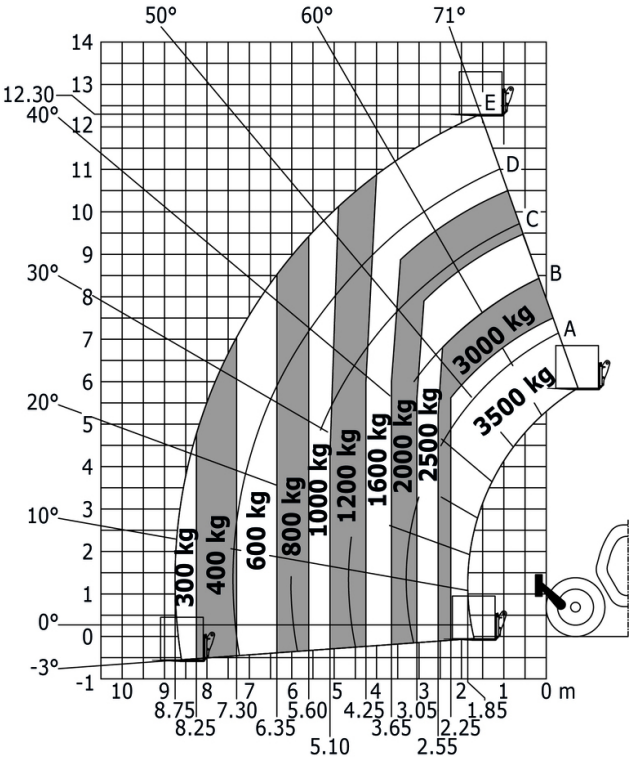
Capacities		Metric	Imperial
Max. capacity		3500 kg	7716 lb
Max. lifting height		12.55 m	41 ft 2 in
Max. outreach		8.75 m	28 ft 8 in
Breakout force with bucket		5803 daN	5803 daN
Weight and dimensions			
Overall length to carriage	l11	5.86 m	19 ft 3 in
Overall width	b1	2.21 m	7 ft 3 in
Overall height	h17	2.42 m	7 ft 11 in
Wheelbase	y	2.88 m	9 ft 5 in
Ground clearance	m4	0.41 m	1 ft 4 in
Overall cab width	b4	0.88 m	2 ft 11 in
Tilt-up angle	a4	12 °	12 °
Tilt-down angle	a5	114 °	114 °
External turning radius (over tyres)	Wa1	3.65 m	12 ft
Unladen weight (with forks)		9300 kg	20503 lb
Overall weight		9200 kg	20283 lb
Tires type		Pneumatic	Pneumatic
Standard tires		Alliance 400/80 - 24 - 162A8	Alliance 400/80 - 24 - 162A8
Forks length / width / section	l / e / s	1200 mm x 125 mm / 45 mm	47 in x 5 in / 2 in
Performances			
Lifting		10.20 s	10.20 s
Lowering		8.90 s	8.90 s
Extension		14.60 s	14.60 s
Retraction		10.40 s	10.40 s
Crowd		5 s	5 s
Dump		4 s	4 s
Engine			
Engine brand		Perkins	Perkins
Engine norm		Stage IV	Stage IV
Engine model		854E-34TA	854E-34TA
Number of cylinders / Capacity of cylinders		4 - 3400 cm³	4 - 207 in³
I.C. Engine power rating - Power		100 Hp / 75 kW	100 Hp / 75 kW
Max. torque / Engine rotation		430 Nm @ 1400 rpm	317 ft/lbs @ 1400 rpm
Drawbar pull (Laden)		9800 daN	9800 daN
Transmission			
Transmission type		Torque converter	Torque converter
Number of gears (forward / reverse)		4 / 4	4 / 4
Max. travel speed		24.90 km/h	15 mph
Parking brake		Automatic parking brake	Automatic parking brake
Service brake		Oil-immersed multi-discs braking on front & rear axles	Oil-immersed multi-discs braking on front & rear axles
Hydraulics			
Hydraulic pump type		Gear pump	Gear pump
Hydraulic flow / Pressure		125 l/min-270 bar	33 US gpm-3916 PSI
Tank capacities			
Engine oil		7.50 l	2 US gal
Hydraulic oil		140 l	37 US gal
Fuel tank		120 l	32 US gal
DEF tank capacity		12 l	3 US gal
Noise and vibration			
Noise at driving position (LpA)		78 dB	78 dB
Noise to environment (LWA)		103 dB	103 dB
Vibration on hands/arms		< 2.50 m/s²	< 2.50 m/s²
Miscellaneous			
Steering wheels (front / rear)		2 / 2	2 / 2
Drive wheels (front / rear)		2 / 2	2 / 2
Safety / Safety cab homologation		Standard EN 15000 / ROPS - FOPS level 2 cab	Standard EN 15000 / ROPS - FOPS level 2 cab
Controls		JSM	JSM

MT 1335 - Dimensional drawing

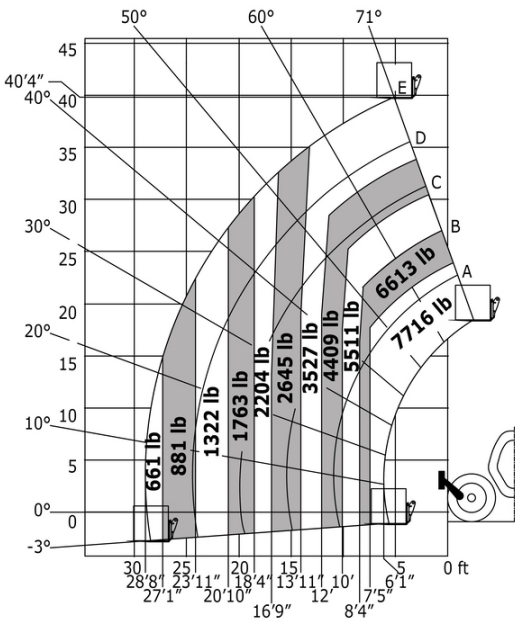


MT 1335 - Load chart

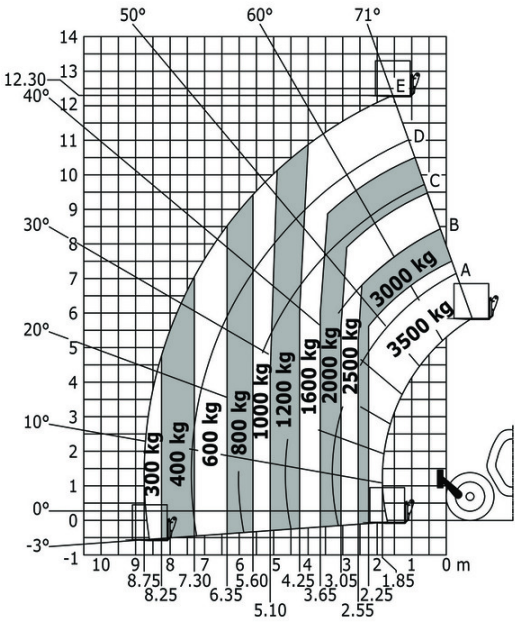
Machine on tyres with forks Metric



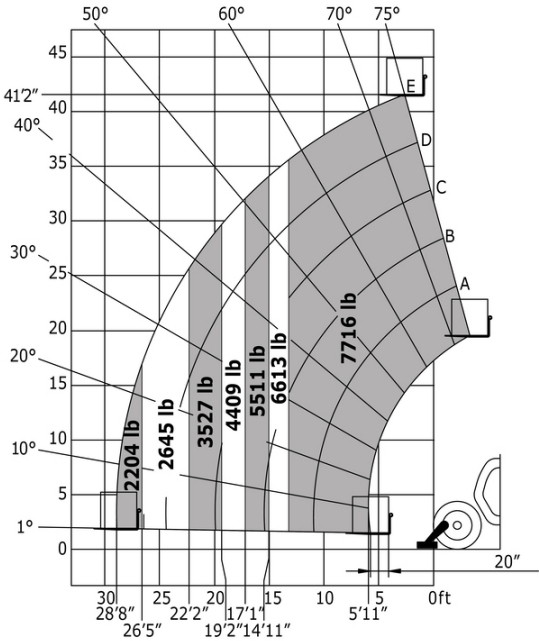
Machine on tyres with forks Imperial



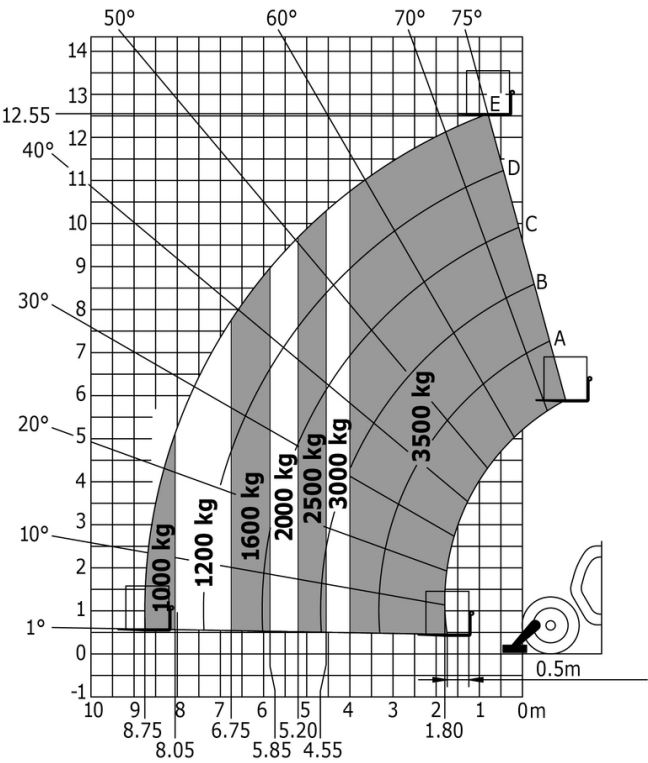
Machine on tyres with forks - with levelling device Metric



Machine on lowered stabilisers with forks Imperial



Machine on lowered stabilisers with forks Metric





**Head Office**

B.P. 249 - 430 rue de l'Aubinière

44150 Ancenis Cedex - France

Tel: +33 (0)2 40 09 10 11 - Fax: +33 (0)2 40 09 10 97

[www.manitou.com](http://www.manitou.com)



This publication provides a description of the configuration versions and options for Manitou products, which may differ for equipment. The equipment presented in this brochure may be part of a series, as an option, or it may not be available, depending on the versions. Manitou reserves the right, at any time and without notice, to amend the specifications described and represented. The specifications provided do not bind the manufacturer. For more details, please contact your Manitou agent. This is not a contractually binding document. The presentation of the products is not contractually binding. List of specifications non-exhaustive. The logos as well as the visual identity of the company are owned by Manitou and cannot be used without authorisation. All rights reserved. The photos and diagrams contained in this brochure are only provided for consultation and information purposes.

MANITOU BF SA - Limited company with board of directors - Share capital: 39,668,399 euros - 857 802 508 RCS Nantes