

Technical sheet :

MT 1440 HA



 **MANITOU**
HANDLING YOUR WORLD

Capacities		Metric	Imperial
Max. capacity		4000 kg	8818 lb
Max. lifting height		13.53 m	44 ft 5 in
Maximum outreach		9.46 m	31 ft
Breakout force with bucket		9390 daN	9390 daN
Weight and dimensions			
Overall length to carriage	l11	6.02 m	19 ft 9 in
Length to face of forks	l2	6.13 m	20 ft 1 in
Overall width	b1	2.36 m	7 ft 9 in
Overall height	h17	2.45 m	8 ft
Wheelbase	y	3.07 m	10 ft 1 in
Ground clearance	m4	0.37 m	1 ft 3 in
Overall cab width	b4	0.89 m	2 ft 11 in
Tilt-up angle	a4	12 °	12 °
Tilt-down angle	a5	114 °	114 °
External turning radius (over tyres)	Wa1	3.94 m	12 ft 11 in
Unladen weight (with forks)		11620 kg	25618 lb
Overall weight		11200 kg	24692 lb
Tires type		Pneumatic	Pneumatic
Standard tires		Alliance 400/80 - 24 - 162A8	Alliance 400/80 - 24 - 162A8
Forks length / width / section	l / e / s	1200 mm x 125 mm x 45 mm	47 in x 5 in x 2 in
Performances			
Lifting		15.70 s	15.70 s
Lowering		13.30 s	13.30 s
Extension		19 s	19 s
Retraction		15 s	15 s
Crowd		4 s	4 s
Dump		4 s	4 s
Engine			
Engine brand		Perkins	Perkins
Engine norm		Stage IV, Tier 4 final	Stage IV, Tier 4 final
Engine model		854F-E34TA	854F-E34TA
Number of cylinders / Capacity of cylinders		4 - 3400 cm³	4 - 207 in³
I.C. Engine power rating - Power		100 Hp / 75 kW	100 Hp / 75 kW
Max. torque / Engine rotation		430 Nm @ 1400 rpm	317 ft/lbs @ 1400 rpm
Drawbar pull (Laden)		7520 daN	7520 daN
Transmission			
Transmission type		Hydrostatic	Hydrostatic
Number of gears (forward / reverse)		3 / 3	3 / 3
Max. travel speed		24.90 km/h	15 mph
Max. travel speed (may vary according to applicable regulations)		25 km/h	16 mph
Parking brake		Automatic parking brake	Automatic parking brake
Service brake		Oil-Immersed multi-discs braking on front axles	Oil-Immersed multi-discs braking on front axles
Hydraulics			
Hydraulic pump type		Gear pump	Gear pump
Hydraulic flow / Pressure		170 l/min-480 bar	45 US gpm-6962 PSI
Tank capacities			
Engine oil		7.50 l	2 US gal
Hydraulic oil		135 l	36 US gal
Diesel Exhaust fluid (AdBlue® type)		21.60 l	6 US gal
Fuel tank		140 l	37 US gal
Noise and vibration			
Noise at driving position (LpA)		78 dB	78 dB
Noise to environment (LwA)		103 dB	103 dB
Vibration on hands/arms		< 2.50 m/s²	< 2.50 m/s²
Miscellaneous			
Steering wheels (front / rear)		2 / 2	2 / 2
Drive wheels (front / rear)		2 / 2	2 / 2
Safety / Cab certification		Standard EN 15000 / Cabin ROPS - FOPS level 2	Standard EN 15000 / Cabin ROPS - FOPS level 2
Controls		JSM	JSM
Additional information		Data indicated with basket basket, except max. capacity, lifting height and offset.	Data indicated with basket basket, except max. capacity, lifting height and offset.

Data indicated with basket basket, except max. capacity, lifting height and offset.

MT 1440 HA - Dimensional drawing

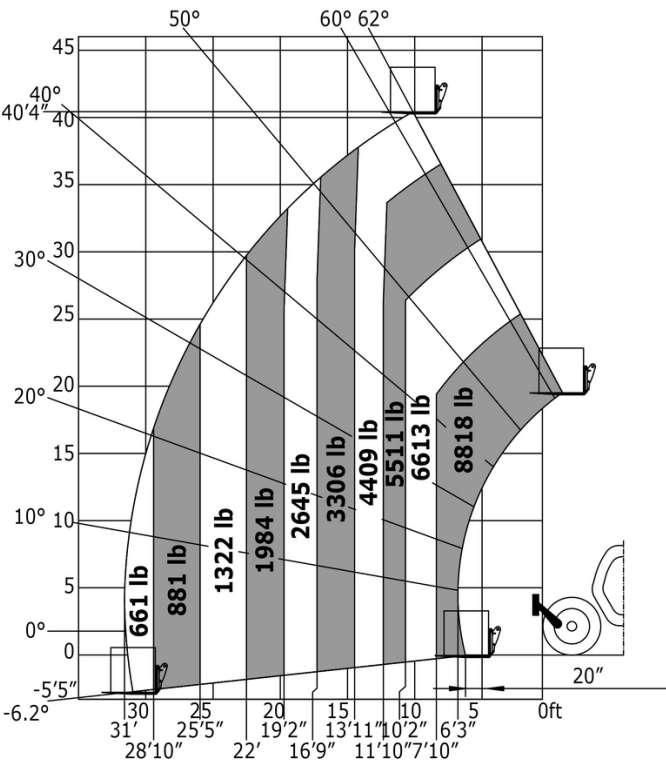


MT 1440 HA - Load chart

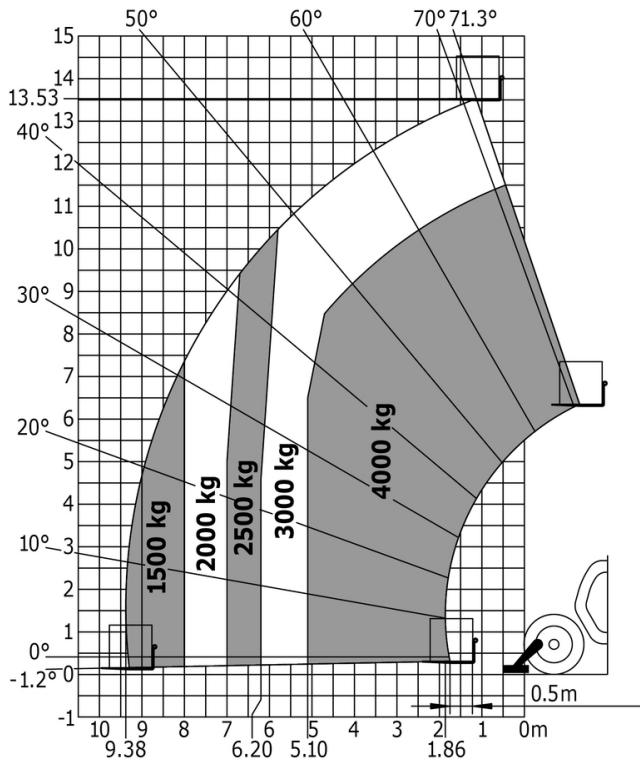
Machine on tires with forks - with levelling device Metric



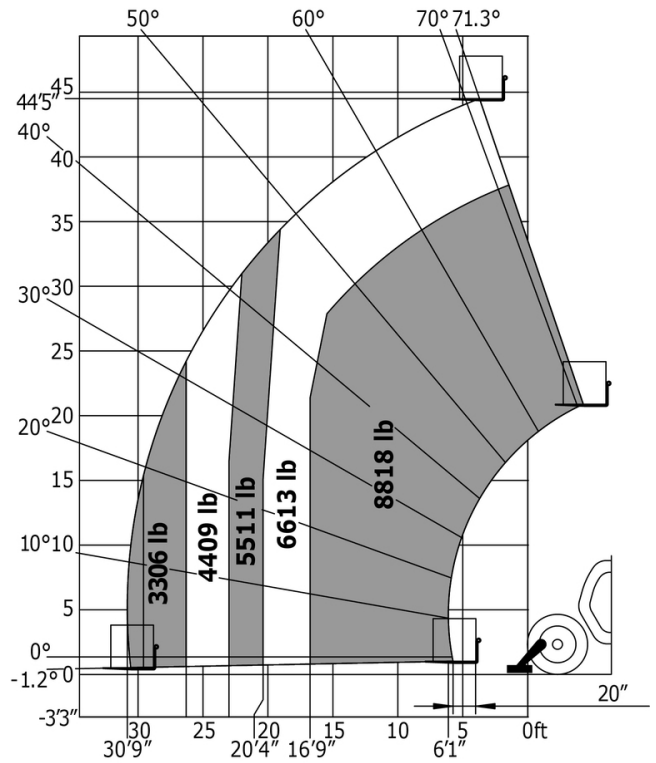
Machine on tires with forks Imperial



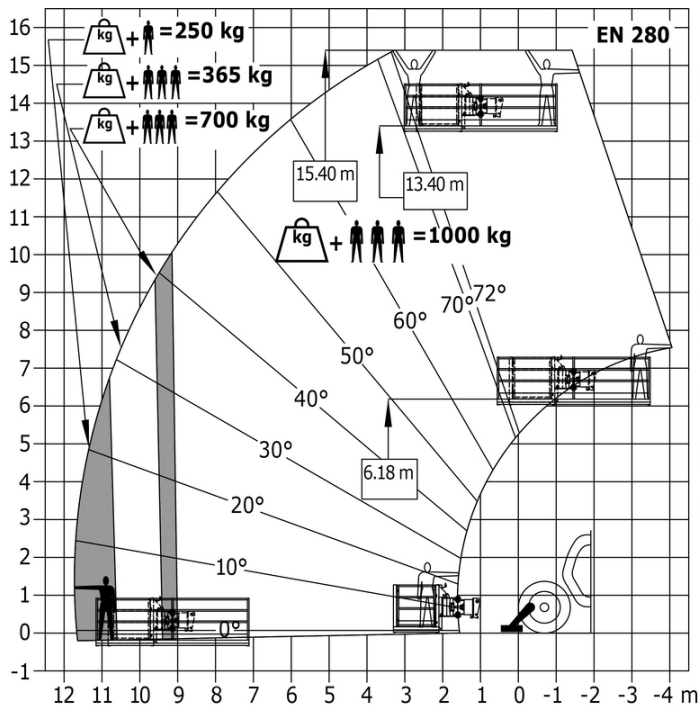
Machine on lowered stabilisers with forks Metric



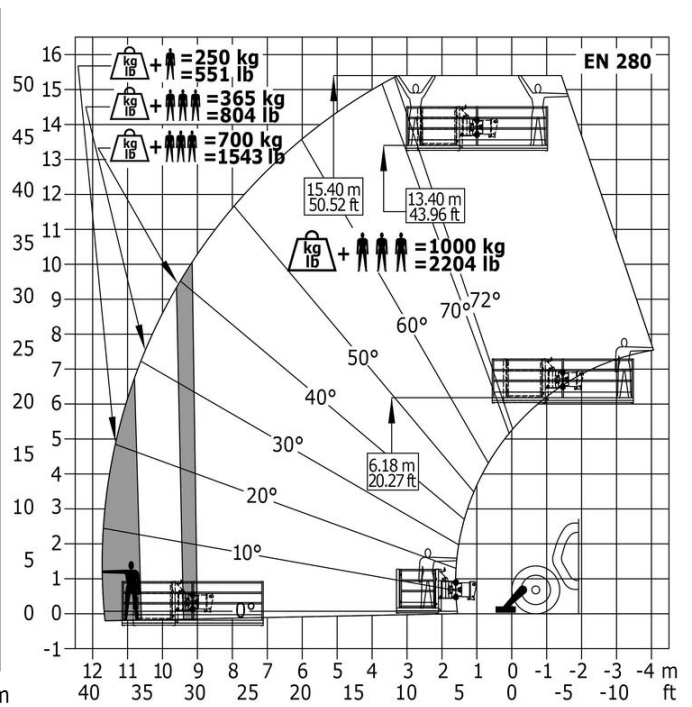
Machine on lowered stabilisers with forks Imperial



Machine on stabilisers with Man basket Metric



Machine on stabilisers with Man basket Imperial





Head Office

B.P. 249 - 430 rue de l'Aubinière

44150 Ancenis Cedex - France

Tel: +33 (0)2 40 09 10 11 - Fax: +33 (0)2 40 09 10 97

www.manitou.com



This publication provides a description of the configuration versions and options for Manitou products, which may differ for equipment. The equipment presented in this brochure may be part of a series, as an option, or it may not be available, depending on the versions. Manitou reserves the right, at any time and without notice, to amend the specifications described and represented. The specifications provided do not bind the manufacturer. For more details, please contact your Manitou agent. This is not a contractually binding document. The presentation of the products is not contractually binding. List of specifications non-exhaustive. The logos as well as the visual identity of the company are owned by Manitou and cannot be used without authorisation. All rights reserved. The photos and diagrams contained in this brochure are only provided for consultation and information purposes.

MANITOU BF SA - Limited company with board of directors - Share capital: 39,668,399 euros - 857 802 508 RCS Nantes