

Technical sheet :

MT 1440 HA



 **MANITOU**
HANDLING YOUR WORLD

| Capacities | | Metric | Imperial |
|--|-----------|---|---|
| Max. capacity | | 4000 kg | 8818 lb |
| Max. lifting height | | 13.53 m | 44 ft 5 in |
| Maximum outreach | | 9.46 m | 31 ft |
| Breakout force with bucket | | 9390 daN | 9390 daN |
| Weight and dimensions | | | |
| Overall length to carriage | l11 | 6.02 m | 19 ft 9 in |
| Length to face of forks | l2 | 6.13 m | 20 ft 1 in |
| Overall width | b1 | 2.36 m | 7 ft 9 in |
| Overall height | h17 | 2.45 m | 8 ft |
| Wheelbase | y | 3.07 m | 10 ft 1 in |
| Ground clearance | m4 | 0.37 m | 1 ft 3 in |
| Overall cab width | b4 | 0.89 m | 2 ft 11 in |
| Tilt-up angle | a4 | 12 ° | 12 ° |
| Tilt-down angle | a5 | 114 ° | 114 ° |
| External turning radius (over tyres) | Wa1 | 3.94 m | 12 ft 11 in |
| Unladen weight (with forks) | | 11620 kg | 25618 lb |
| Overall weight | | 11200 kg | 24692 lb |
| Tires type | | Pneumatic | Pneumatic |
| Standard tires | | Alliance 400/80 - 24 - 162A8 | Alliance 400/80 - 24 - 162A8 |
| Forks length / width / section | l / e / s | 1200 mm x 125 mm x 45 mm | 47 in x 5 in x 2 in |
| Performances | | | |
| Lifting | | 15.70 s | 15.70 s |
| Lowering | | 13.30 s | 13.30 s |
| Extension | | 19 s | 19 s |
| Retraction | | 15 s | 15 s |
| Crowd | | 4 s | 4 s |
| Dump | | 4 s | 4 s |
| Engine | | | |
| Engine brand | | Perkins | Perkins |
| Engine norm | | Stage IV, Tier 4 final | Stage IV, Tier 4 final |
| Engine model | | 854F-E34TA | 854F-E34TA |
| Number of cylinders / Capacity of cylinders | | 4 - 3400 cm³ | 4 - 207 in³ |
| I.C. Engine power rating - Power | | 100 Hp / 75 kW | 100 Hp / 75 kW |
| Max. torque / Engine rotation | | 430 Nm @ 1400 rpm | 317 ft/lbs @ 1400 rpm |
| Drawbar pull (Laden) | | 7520 daN | 7520 daN |
| Transmission | | | |
| Transmission type | | Hydrostatic | Hydrostatic |
| Number of gears (forward / reverse) | | 3 / 3 | 3 / 3 |
| Max. travel speed | | 24.90 km/h | 15 mph |
| Max. travel speed (may vary according to applicable regulations) | | 25 km/h | 16 mph |
| Parking brake | | Automatic parking brake | Automatic parking brake |
| Service brake | | Oil-Immersed multi-discs braking on front axles | Oil-Immersed multi-discs braking on front axles |
| Hydraulics | | | |
| Hydraulic pump type | | Gear pump | Gear pump |
| Hydraulic flow / Pressure | | 170 l/min-480 bar | 45 US gpm-6962 PSI |
| Tank capacities | | | |
| Engine oil | | 7.50 l | 2 US gal |
| Hydraulic oil | | 135 l | 36 US gal |
| Diesel Exhaust fluid (AdBlue® type) | | 21.60 l | 6 US gal |
| Fuel tank | | 140 l | 37 US gal |
| Noise and vibration | | | |
| Noise at driving position (LpA) | | 78 dB | 78 dB |
| Noise to environment (LwA) | | 103 dB | 103 dB |
| Vibration on hands/arms | | < 2.50 m/s² | < 2.50 m/s² |
| Miscellaneous | | | |
| Steering wheels (front / rear) | | 2 / 2 | 2 / 2 |
| Drive wheels (front / rear) | | 2 / 2 | 2 / 2 |
| Safety / Cab certification | | Standard EN 15000 / Cabin ROPS - FOPS level 2 | Standard EN 15000 / Cabin ROPS - FOPS level 2 |
| Controls | | JSM | JSM |
| Additional information | | Data indicated with basket basket, except max. capacity, lifting height and offset. | Data indicated with basket basket, except max. capacity, lifting height and offset. |

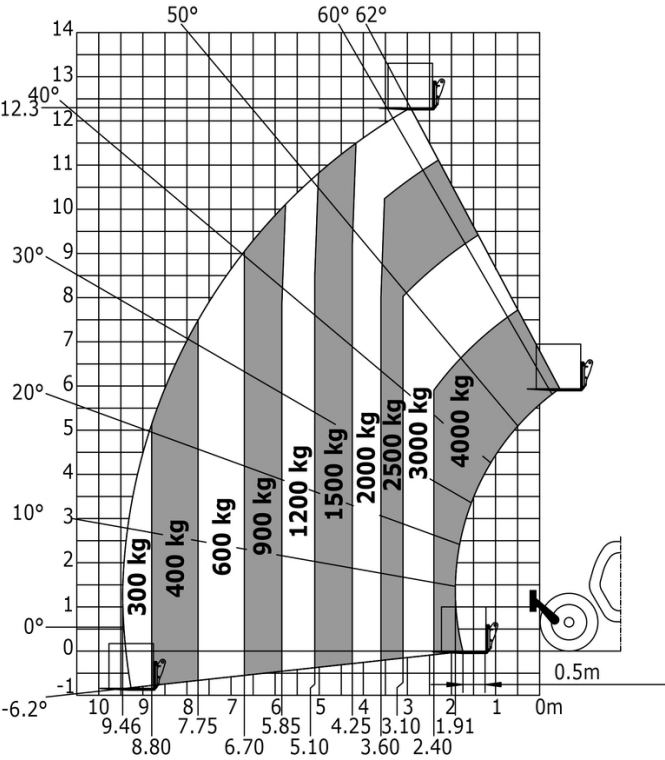
Data indicated with basket basket, except max. capacity, lifting height and offset.

MT 1440 HA - Dimensional drawing

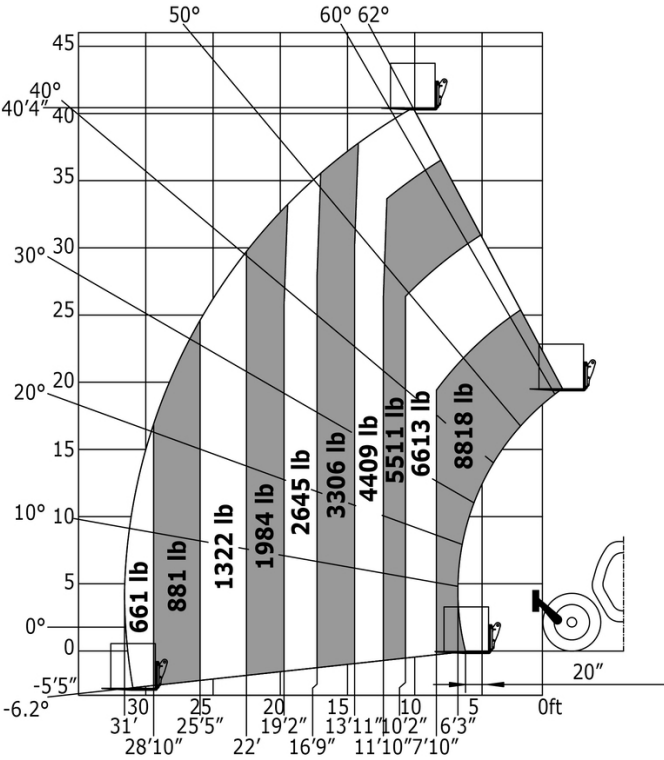


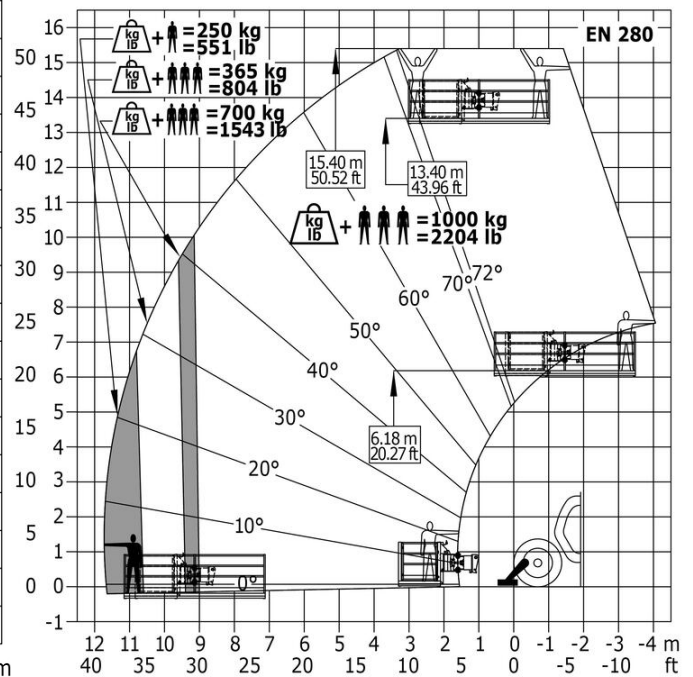
MT 1440 HA - Load chart

Machine on tires with forks - with levelling device Metric



Machine on tires with forks Imperial







Head Office

B.P. 249 - 430 rue de l'Aubinière

44150 Ancenis Cedex - France

Tel: +33 (0)2 40 09 10 11 - Fax: +33 (0)2 40 09 10 97

www.manitou.com



This publication provides a description of the configuration versions and options for Manitou products, which may differ for equipment. The equipment presented in this brochure may be part of a series, as an option, or it may not be available, depending on the versions. Manitou reserves the right, at any time and without notice, to amend the specifications described and represented. The specifications provided do not bind the manufacturer. For more details, please contact your Manitou agent. This is not a contractually binding document. The presentation of the products is not contractually binding. List of specifications non-exhaustive. The logos as well as the visual identity of the company are owned by Manitou and cannot be used without authorisation. All rights reserved. The photos and diagrams contained in this brochure are only provided for consultation and information purposes.

MANITOU BF SA - Limited company with board of directors - Share capital: 39,668,399 euros - 857 802 508 RCS Nantes