

Technical sheet :

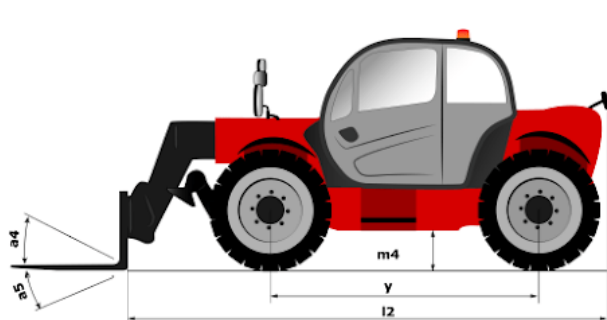
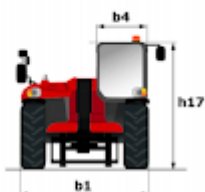
# MTA 5519 S3



 **MANITOU**  
HANDLING YOUR WORLD

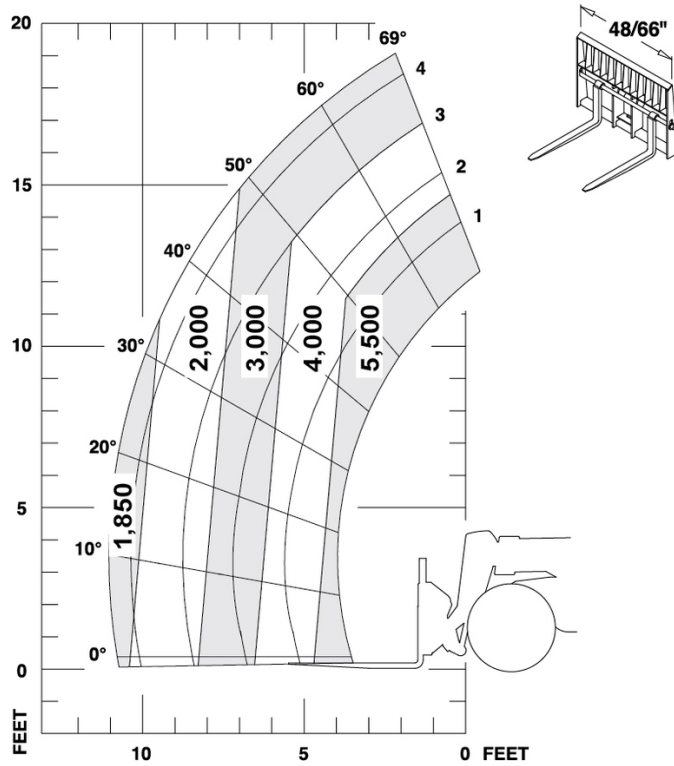
Capacities		Metric	Imperial
Max. capacity		2495 kg	5501 lb
Max. lifting height		5.80 m	19 ft
Max. outreach		3.35 m	11 ft
Weight and dimensions			
Overall length to carriage	l11	3.76 m	12 ft 4 in
Overall width	b1	1.80 m	5 ft 11 in
Overall height	h17	1.93 m	6 ft 4 in
Wheelbase	y	2.29 m	7 ft 6 in
Ground clearance	m4	266 mm	10 in
Overall cab width	b4	711 mm	28 in
Tilt-up angle	a4	12 °	12 °
Tilt-down angle	a5	100 °	100 °
External turning radius	Wa3	3.35 m	11 ft
Unladen weight (with forks)		4400 kg	9700 lb
Standard tires		12 x 16.5	12 x 16.5
Performances			
Lifting		8 s	8 s
Lowering		5 s	5 s
Extension		7 s	7 s
Retraction		6 s	6 s
Crowd		4 s	4 s
Dump		4 s	4 s
Engine			
Engine brand		Yanmar	Yanmar
Engine norm		Tier 4 final	Tier 4 final
Engine model		4TNV98	4TNV98
Number of cylinders / Capacity of cylinders		4 - 3.32 cm³	4 - 0.20 in³
I.C. Engine power rating - Power		68 Hp / 50.70 kW	68 Hp / 50.70 kW
Max. torque / Engine rotation		235 Nm @ 235 rpm	173 ft/lbs @ 235 rpm
Transmission			
Transmission type		Hydrostatic	Hydrostatic
Number of gears (forward / reverse)		2 / 2	2 / 2
Parking brake		SAHR	SAHR
Service brake		Wet disc brakes	Wet disc brakes
Axle Manufacturer		Dana	Dana
Hydraulics			
Hydraulic pump type		Gear pump	Gear pump
Hydraulic flow / Pressure		83 l/min-231 bar	22 US gpm-3350 PSI
Tank capacities			
Engine oil		9 l	2 US gal
Hydraulic oil		68 l	18 US gal
Fuel tank		64 l	17 US gal
Miscellaneous			
Steering wheels (front / rear)		2 / 2	2 / 2
Drive wheels (front / rear)		2 / 2	2 / 2
Safety cab homologation		ROPS/FOPS	ROPS/FOPS
Controls		Single joystick with FNR	Single joystick with FNR

## MTA 5519 S3 - Dimensional drawing

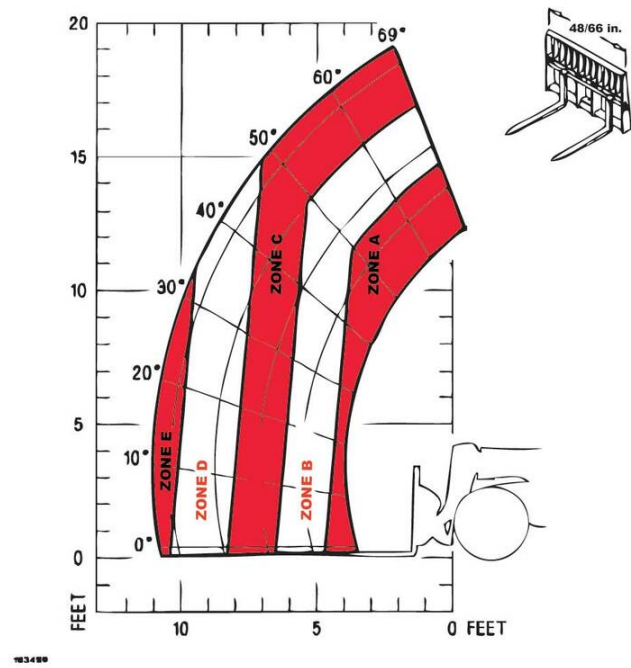


## MTA 5519 S3 - Load chart

Machine on tyres with forks - with levelling device Metric



Machine on tyres with forks Imperial





**Head Office**

B.P. 249 - 430 rue de l'Aubinière

44150 Ancenis Cedex - France

Tel: +33 (0)2 40 09 10 11 - Fax: +33 (0)2 40 09 10 97

[www.manitou.com](http://www.manitou.com)



This publication provides a description of the configuration versions and options for Manitou products, which may differ for equipment. The equipment presented in this brochure may be part of a series, as an option, or it may not be available, depending on the versions. Manitou reserves the right, at any time and without notice, to amend the specifications described and represented. The specifications provided do not bind the manufacturer. For more details, please contact your Manitou agent. This is not a contractually binding document. The presentation of the products is not contractually binding. List of specifications non-exhaustive. The logos as well as the visual identity of the company are owned by Manitou and cannot be used without authorisation. All rights reserved. The photos and diagrams contained in this brochure are only provided for consultation and information purposes.

MANITOU BF SA - Limited company with board of directors - Share capital: 39,668,399 euros - 857 802 508 RCS Nantes