

Technical sheet :

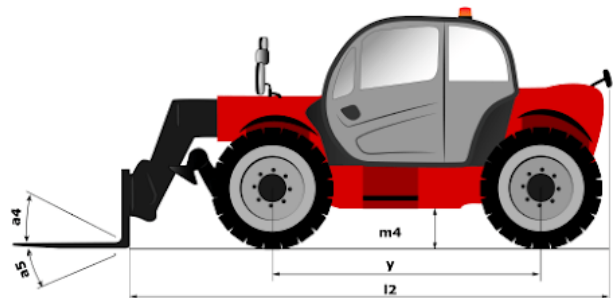
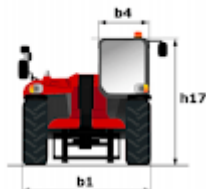
MTA 6034 S3



 **MANITOU**
HANDLING YOUR WORLD

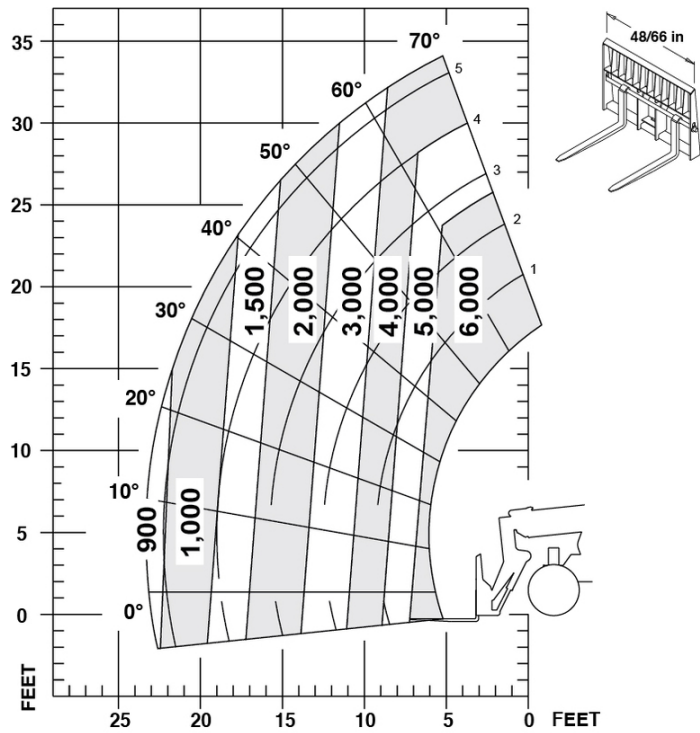
| Capacities | | Metric | Imperial |
|---|-----|--|--|
| Max. capacity | | 2721 kg | 5999 lb |
| Max. lifting height | | 10.44 m | 34 ft 3 in |
| Max. outreach | | 7.09 m | 23 ft 3 in |
| Weight and dimensions | | | |
| Overall length to carriage | l11 | 4.88 m | 16 ft |
| Overall width | b1 | 2.39 m | 7 ft 10 in |
| Overall height | h17 | 2.36 m | 7 ft 9 in |
| Wheelbase | y | 2.80 m | 9 ft 2 in |
| Ground clearance | m4 | 356 mm | 14 in |
| Overall cab width | b4 | 762 mm | 30 in |
| Tilt-up angle | a4 | 12 ° | 12 ° |
| Tilt-down angle | a5 | 106 ° | 106 ° |
| External turning radius | Wa3 | 3.81 m | 12 ft 6 in |
| Unladen weight (with forks) | | 6855 kg | 15113 lb |
| Standard tires | | 15 x 19.5 | 15 x 19.5 |
| Frame leveling longitudinal +/- | | 10 ° | 10 ° |
| Frame leveling corrector | a9 | 10 ° | 10 ° |
| Performances | | | |
| Lifting | | 11 s | 11 s |
| Lowering | | 8 s | 8 s |
| Extension | | 10 s | 10 s |
| Retraction | | 11 s | 11 s |
| Crowd | | 4 s | 4 s |
| Dump | | 3 s | 3 s |
| Engine | | | |
| Engine brand | | Deutz | Deutz |
| Engine norm | | Stage IV / Tier 4 Final | Stage IV / Tier 4 Final |
| Engine model | | TD3.6 L4 | TD3.6 L4 |
| Number of cylinders / Capacity of cylinders | | 4 - 3.62 cm³ | 4 - 0.22 in³ |
| I.C. Engine power rating - Power | | 74.29 Hp / 55.40 kW | 74.29 Hp / 55.40 kW |
| Max. torque / Engine rotation | | 330 Nm @ 330 rpm | 243 ft/lbs @ 330 rpm |
| Transmission | | | |
| Transmission type | | Torque converter with powershift gearbox | Torque converter with powershift gearbox |
| Number of gears (forward / reverse) | | 3 / 3 | 3 / 3 |
| Travel speed (laden) | | 29 km/h | 18 mph |
| Parking brake | | SAHR | SAHR |
| Service brake | | Wet disc brakes | Wet disc brakes |
| Axle Manufacturer | | Dana | Dana |
| Hydraulics | | | |
| Hydraulic pump type | | Gear pump | Gear pump |
| Hydraulic flow / Pressure | | 110 l/min-207 bar | 29 US gpm-3002 PSI |
| Tank capacities | | | |
| Engine oil | | 8.90 l | 2 US gal |
| Hydraulic oil | | 133 l | 35 US gal |
| Fuel tank | | 110 l | 29 US gal |
| Miscellaneous | | | |
| Steering wheels (front / rear) | | 2 / 2 | 2 / 2 |
| Drive wheels (front / rear) | | 2 / 2 | 2 / 2 |
| Safety cab homologation | | ROPS/FOPS | ROPS/FOPS |
| Controls | | Single joystick with FNR | Single joystick with FNR |

MTA 6034 S3 - Dimensional drawing



MTA 6034 S3 - Load chart

Machine on tyres with forks - with levelling device Metric





Head Office

B.P. 249 - 430 rue de l'Aubinière

44150 Ancenis Cedex - France

Tel: +33 (0)2 40 09 10 11 - Fax: +33 (0)2 40 09 10 97

www.manitou.com



This publication provides a description of the configuration versions and options for Manitou products, which may differ for equipment. The equipment presented in this brochure may be part of a series, as an option, or it may not be available, depending on the versions. Manitou reserves the right, at any time and without notice, to amend the specifications described and represented. The specifications provided do not bind the manufacturer. For more details, please contact your Manitou agent. This is not a contractually binding document. The presentation of the products is not contractually binding. List of specifications non-exhaustive. The logos as well as the visual identity of the company are owned by Manitou and cannot be used without authorisation. All rights reserved. The photos and diagrams contained in this brochure are only provided for consultation and information purposes.

MANITOU BF SA - Limited company with board of directors - Share capital: 39,668,399 euros - 857 802 508 RCS Nantes