

Technical sheet :

# **MTA 6034 S3**

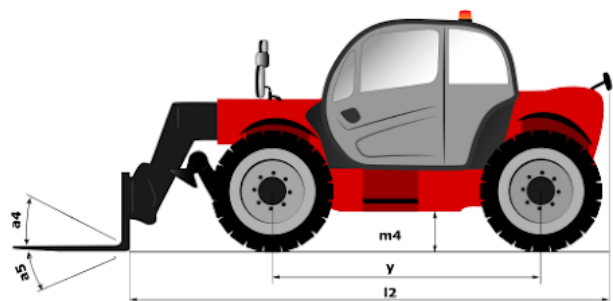
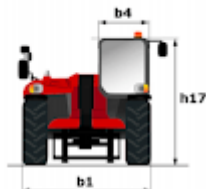
---



 **MANITOU**  
HANDLING YOUR WORLD

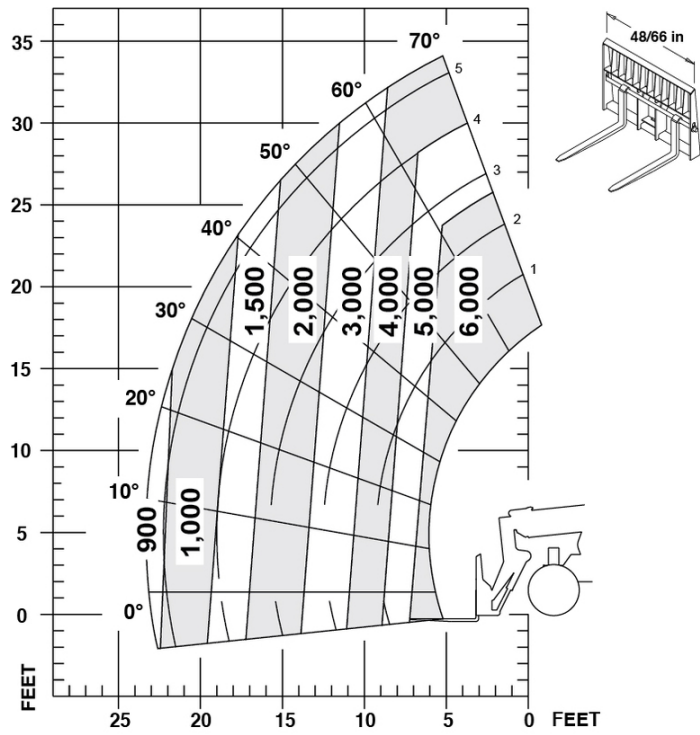
Capacities		Metric	Imperial
Max. capacity		2721 kg	5999 lb
Max. lifting height		10.44 m	34 ft 3 in
Max. outreach		7.09 m	23 ft 3 in
Weight and dimensions			
Overall length to carriage	l11	4.88 m	16 ft
Overall width	b1	2.39 m	7 ft 10 in
Overall height	h17	2.36 m	7 ft 9 in
Wheelbase	y	2.80 m	9 ft 2 in
Ground clearance	m4	356 mm	14 in
Overall cab width	b4	762 mm	30 in
Tilt-up angle	a4	12 °	12 °
Tilt-down angle	a5	106 °	106 °
External turning radius	Wa3	3.81 m	12 ft 6 in
Unladen weight (with forks)		6855 kg	15113 lb
Standard tires		15 x 19.5	15 x 19.5
Frame leveling longitudinal +/-		10 °	10 °
Frame leveling corrector	a9	10 °	10 °
Performances			
Lifting		11 s	11 s
Lowering		8 s	8 s
Extension		10 s	10 s
Retraction		11 s	11 s
Crowd		4 s	4 s
Dump		3 s	3 s
Engine			
Engine brand		Deutz	Deutz
Engine norm		Stage IV / Tier 4 Final	Stage IV / Tier 4 Final
Engine model		TD3.6 L4	TD3.6 L4
Number of cylinders / Capacity of cylinders		4 - 3.62 cm³	4 - 0.22 in³
I.C. Engine power rating - Power		74.29 Hp / 55.40 kW	74.29 Hp / 55.40 kW
Max. torque / Engine rotation		330 Nm @ 330 rpm	243 ft/lbs @ 330 rpm
Transmission			
Transmission type		Torque converter with powershift gearbox	Torque converter with powershift gearbox
Number of gears (forward / reverse)		3 / 3	3 / 3
Travel speed (laden)		29 km/h	18 mph
Parking brake		SAHR	SAHR
Service brake		Wet disc brakes	Wet disc brakes
Axle Manufacturer		Dana	Dana
Hydraulics			
Hydraulic pump type		Gear pump	Gear pump
Hydraulic flow / Pressure		110 l/min-207 bar	29 US gpm-3002 PSI
Tank capacities			
Engine oil		8.90 l	2 US gal
Hydraulic oil		133 l	35 US gal
Fuel tank		110 l	29 US gal
Miscellaneous			
Steering wheels (front / rear)		2 / 2	2 / 2
Drive wheels (front / rear)		2 / 2	2 / 2
Safety cab homologation		ROPS/FOPS	ROPS/FOPS
Controls		Single joystick with FNR	Single joystick with FNR

## MTA 6034 S3 - Dimensional drawing



## MTA 6034 S3 - Load chart

Machine on tyres with forks - with levelling device Metric





**Head Office**

B.P. 249 - 430 rue de l'Aubinière

44150 Ancenis Cedex - France

Tel: +33 (0)2 40 09 10 11 - Fax: +33 (0)2 40 09 10 97

[www.manitou.com](http://www.manitou.com)



This publication provides a description of the configuration versions and options for Manitou products, which may differ for equipment. The equipment presented in this brochure may be part of a series, as an option, or it may not be available, depending on the versions. Manitou reserves the right, at any time and without notice, to amend the specifications described and represented. The specifications provided do not bind the manufacturer. For more details, please contact your Manitou agent. This is not a contractually binding document. The presentation of the products is not contractually binding. List of specifications non-exhaustive. The logos as well as the visual identity of the company are owned by Manitou and cannot be used without authorisation. All rights reserved. The photos and diagrams contained in this brochure are only provided for consultation and information purposes.

MANITOU BF SA - Limited company with board of directors - Share capital: 39,668,399 euros - 857 802 508 RCS Nantes