

Technical sheet :

170 AETJ-L

OXYGEN
by MANITOU

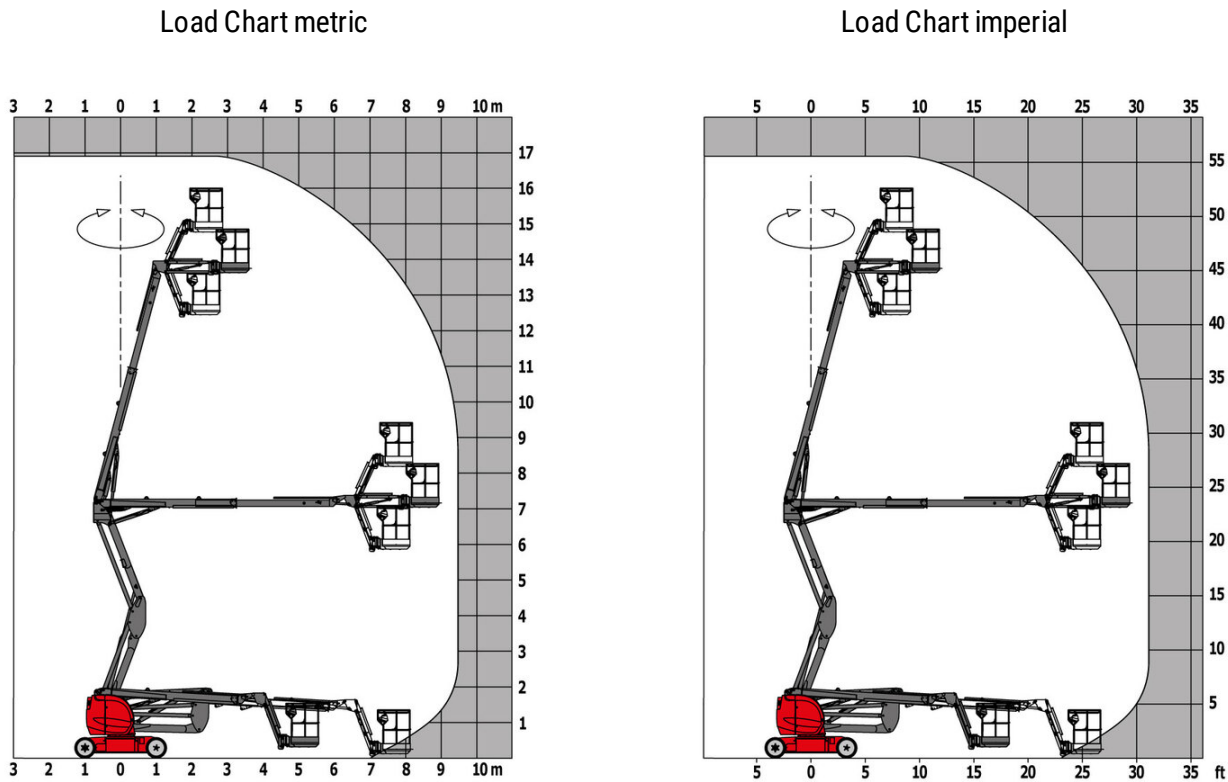


 **MANITOU**
HANDLING YOUR WORLD

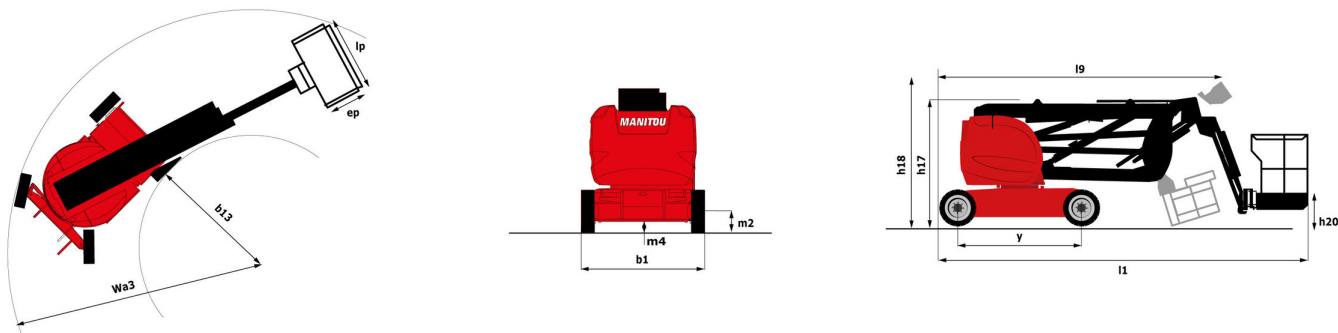
| Capacities | | Metric | Imperial |
|--|---------|--|--|
| Working height | h21 | 16.90 m | 55 ft 5 in |
| Platform height | h7 | 14.90 m | 48 ft 11 in |
| Maximum outreach | | 9.43 m | 30 ft 11 in |
| Overhang | | 7 m | 23 ft |
| Pendular arm rotation (top / bottom) | | +65 ° / -65 ° | +65 ° / -65 ° |
| Platform capacity | Q | 200 kg | 441 lb |
| Turret rotation | | 355 ° | 355 ° |
| Platform rotation (right / left) | | 66 ° / 59 ° | 66 ° / 59 ° |
| Number of people (indoor / outdoor) | | 2 / 2 | 2 / 2 |
| Weight and dimensions | | | |
| Platform weight* | | 6950 kg | 15322 lb |
| Platform dimensions (length x width) | lp / ep | 1.20 m x 0.92 m | 3 ft 11 in x 3 ft |
| Floor height (access) | h20 | 0.40 m | 1 ft 4 in |
| Overall length | l1 | 6.84 m | 22 ft 5 in |
| Overall width | b1 | 1.75 m | 5 ft 9 in |
| Overall height | h17 | 1.97 m | 6 ft 6 in |
| Overall length (stowed) | l9 | 5.12 m | 16 ft 10 in |
| Overall height (stowed) | h18 *** | 2.04 m | 6 ft 8 in |
| Jib length | l13 | 1.26 m | 4 ft 2 in |
| Counterweight offset (turret at 90°) | a7 | 0.08 m | 3 in |
| Counterweight Oversize / Reach | | 0.08 m | 3 in |
| External turning radius | Wa3 | 4.30 m | 14 ft 1 in |
| Ground clearance at centre of wheelbase | m2 | 0.14 m | 6 in |
| Wheelbase | y | 2 m | 6 ft 7 in |
| Performances | | | |
| Drive speed - stowed | | 5 km/h | 3 mph |
| Drive speed - raised | | 0.60 km/h | 0.37 mph |
| Gradeability | | 22 % | 22 % |
| Permissible leveling | | 3 ° | 3 ° |
| Wheels | | | |
| Tires type | | Solid non-marking tires | Solid non-marking tires |
| Standard tires | | 24 x 7.5 in / 600 x 190 mm | 24 x 7.5 in / 600 x 190 mm |
| Drive wheels (front / rear) | | 0 / 2 | 0 / 2 |
| Steering wheels (front / rear) | | 2 / 0 | 2 / 0 |
| Braking wheels (front / rear) | | 0 / 2 | 0 / 2 |
| Engine/Battery | | | |
| Electric engine power rating | | 2 x 4.50 kW | 2 x 4.50 kW |
| Lift motor power | | 3.70 kW | 3.70 kW |
| Battery voltage | | 48 V | 48 V |
| Battery nominal voltage / capacity | | 48 V / 240 Ah | 48 V / 240 Ah |
| Battery energy | | 11 kW/h | 11 kW/h |
| On-board charger (V / A) | | 48 V / 30 A | 48 V / 30 A |
| Miscellaneous | | | |
| Number of cycles with STD Battery (HIRD) | | 46 | 46 |
| Ground Pressure | | 16.60 dan/cm2 | 241 PSI |
| Hydraulic Pressure | | 210 bar | 3046 PSI |
| Hydraulic tank capacity | | 15 l | 4 US gal |
| Vibration on hands/arms | | < 0.66 m/s² | < 0.66 m/s² |
| Standards compliance | | | |
| This machine is in compliance with: | | European directives: 2006/42/EC- Machinery (revised EN280:2013) - 2004/108/EC (EMC) - 2006/95/EC (Low voltage) | European directives: 2006/42/EC- Machinery (revised EN280:2013) - 2004/108/EC (EMC) - 2006/95/EC (Low voltage) |

*Varies according to options and standards of the country to which the machine is delivered

170 AETJ-L - Load chart



170 AETJ-L - Dimensional drawing



Equipment

Standard

230V Predisposition
Audible alarm and illuminated indicator lamp (leveling, overload, lowering)
Battery charge indicator lamp
CAN bus technology
Emergency stop button in platform and on frame
Hom in the platform
Hour meter
Integrated diagnostic assistance
Manual emergency lowering
Multi-voltage integrated charger
Negative-type braking on rear wheels
Non-marking rubber tyres
Pendular arm
Platform with open-work floor
Proportional controls
Sliding and securing rings
Tool box in platform
Traction battery
Travel possible at maximum height

Optional

110 or 230V plug with differential circuit breaker
Biodegradable oil
Cold weather kit
Cold weather protection oil
High capacity starting battery
LED strobe Light on the basket
LED strobe light on the turret
Lights
Maintenance-free battery
Non-marking Foam Inflated Tires 683 x 236 mm / 27 x 10-12 in
Personalized paintwork
Protective cover for control panel
SMS : Safe Man System
Safety harness
Water predisposition
Working headlight in platform



Head Office

B.P. 249 - 430 rue de l'Aubinière

44150 Ancenis Cedex - France

Tel: +33 (0)2 40 09 10 11 - Fax: +33 (0)2 40 09 10 97

www.manitou.com



This publication provides a description of the configuration versions and options for Manitou products, which may differ for equipment. The equipment presented in this brochure may be part of a series, as an option, or it may not be available, depending on the versions. Manitou reserves the right, at any time and without notice, to amend the specifications described and represented. The specifications provided do not bind the manufacturer. For more details, please contact your Manitou agent. This is not a contractually binding document. The presentation of the products is not contractually binding. List of specifications non-exhaustive. The logos as well as the visual identity of the company are owned by Manitou and cannot be used without authorisation. All rights reserved. The photos and diagrams contained in this brochure are only provided for consultation and information purposes.

MANITOU BF SA - Limited company with board of directors - Share capital: 39,668,399 euros - 857 802 508 RCS Nantes