

Technical sheet :

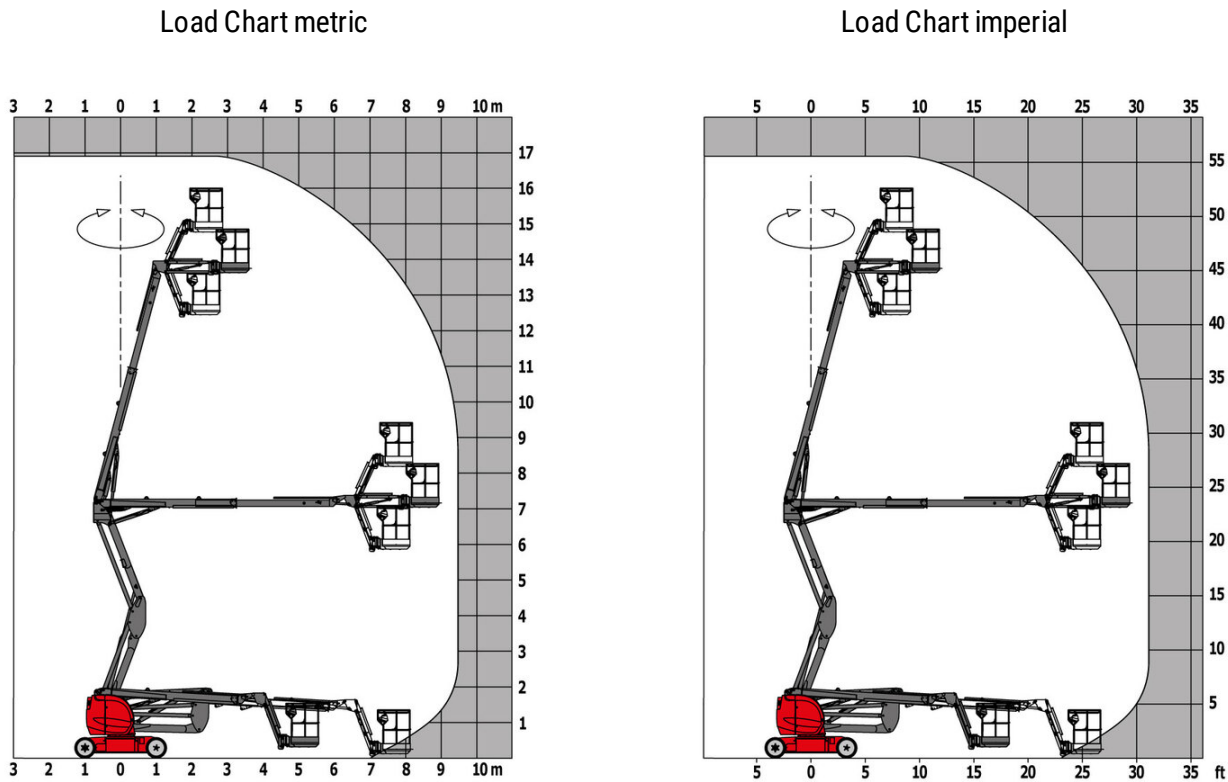
170 AETJ-L BI



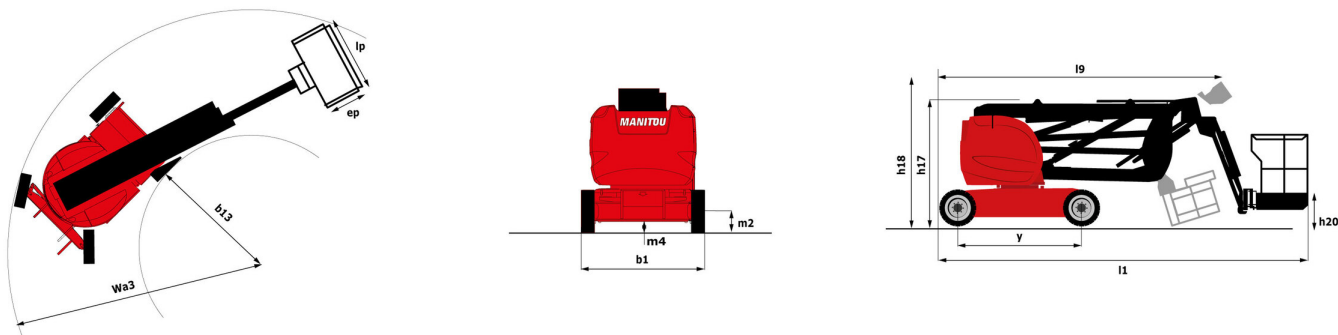
 **MANITOU**
HANDLING YOUR WORLD

Capacities		Metric	Imperial
Working height	h21	17.03 m	55 ft 10 in
Platform height	h7	15.03 m	49 ft 4 in
Maximum outreach		9.43 m	30 ft 11 in
Overhang		7.27 m	23 ft 10 in
Pendular arm rotation (top / bottom)		+62 ° / -59 °	+62 ° / -59 °
Platform capacity	Q	230 kg	507 lb
Turret rotation		355 °	355 °
Platform rotation (right / left)		70 ° / 70 °	70 ° / 70 °
Number of people (indoor / outdoor)		2 / 2	2 / 2
Weight and dimensions			
Platform weight*		7435 kg	16391 lb
Platform dimensions (length x width)	lp / ep	1.20 m x 0.92 m	3 ft 11 in x 3 ft
Floor height (access)	h20	0.40 m	1 ft 4 in
Overall length	l1	6.99 m	22 ft 11 in
Overall width	b1	1.91 m	6 ft 3 in
Overall height	h17	2.10 m	6 ft 11 in
Overall length (stowed)	l9	5.27 m	17 ft 3 in
Overall height (stowed)	h18 ***	2.13 m	7 ft
Jib length	l13	1.26 m	4 ft 2 in
Counterweight offset (turret at 90°)	a7	0 m	0 in
External turning radius	Wa3	4.27 m	14 ft
Ground clearance at centre of wheelbase	m2	0.18 m	7 in
Wheelbase	y	2.20 m	7 ft 3 in
Performances			
Drive speed - stowed		6 km/h	4 mph
Drive speed - raised		0.60 km/h	0.37 mph
Gradeability		21 %	21 %
Permissible leveling		5 °	5 °
Wheels			
Tires type		Foam Filled Non Marking	Foam Filled Non Marking
Drive wheels (front / rear)		0 / 2	0 / 2
Steering wheels (front / rear)		2 / 0	2 / 0
Braking wheels (front / rear)		0 / 2	0 / 2
Engine/Battery			
Electric engine power rating		2 x 4.50 kW	2 x 4.50 kW
Lift motor power		3.70 kW	3.70 kW
I.C. Engine power rating / Power		12 Hp / 9.20 kW	12 Hp / 9.20 kW
Battery voltage		48 V	48 V
Battery nominal voltage / capacity		48 V / 300 Ah	48 V / 300 Ah
Battery energy		14 kW/h	14 kW/h
On-board charger (V / A)		48 V / 45 A	48 V / 45 A
Miscellaneous			
Ground Pressure		14.48 dan/cm2	210 PSI
Hydraulic Pressure		200 bar	2901 PSI
Hydraulic tank capacity		12 l	3 US gal
Fuel tank		30 l	8 US gal
Vibration on hands/arms		< 2.50 m/s²	< 2.50 m/s²
Standards compliance			
This machine is in compliance with:		European directives: 2006/42/EC- Machinery (revised EN280:2013) - 2004/108/EC (EMC) - 2006/95/EC (Low voltage)	European directives: 2006/42/EC- Machinery (revised EN280:2013) - 2004/108/EC (EMC) - 2006/95/EC (Low voltage)

170 AETJ-L BI - Load chart



170 AETJ-L BI - Dimensional drawing



Equipment

Standard

230V Predisposition
All-terrain, non-marking, foam-filled tyres
Audible alarm and illuminated indicator lamp (leveling, overload, lowering)
Battery charge indicator lamp
CAN bus technology
Easy Manager
Emergency stop button in platform and on frame
Hom in the platform
Hour meter
Integrated diagnostic assistance
Manual emergency lowering
Multi-voltage integrated charger
Negative-type braking on rear wheels
Pendular arm
Platform with open-work floor
Proportional controls
Protective cover for control panel
Slings and securing rings
Tool box in platform
Traction battery
Travel possible at maximum height

Optional

110 or 230V plug with differential circuit breaker
Biodegradable oil
Cold weather protection oil
LED strobe Light on the basket
LED strobe light on the turret
Lights
Lockable fuel cap
Non-marking Foam Inflated Tires 683 x 236 mm / 27 x 10-12 in
Personalized paintwork
SMS : Safe Man System
Safety harness
Water predisposition
Working headlight in platform



Head Office

B.P. 249 - 430 rue de l'Aubinière

44150 Ancenis Cedex - France

Tel: +33 (0)2 40 09 10 11 - Fax: +33 (0)2 40 09 10 97

www.manitou.com



This publication provides a description of the configuration versions and options for Manitou products, which may differ for equipment. The equipment presented in this brochure may be part of a series, as an option, or it may not be available, depending on the versions. Manitou reserves the right, at any time and without notice, to amend the specifications described and represented. The specifications provided do not bind the manufacturer. For more details, please contact your Manitou agent. This is not a contractually binding document. The presentation of the products is not contractually binding. List of specifications non-exhaustive. The logos as well as the visual identity of the company are owned by Manitou and cannot be used without authorisation. All rights reserved. The photos and diagrams contained in this brochure are only provided for consultation and information purposes.

MANITOU BF SA - Limited company with board of directors - Share capital: 39,668,399 euros - 857 802 508 RCS Nantes