

Technical sheet :

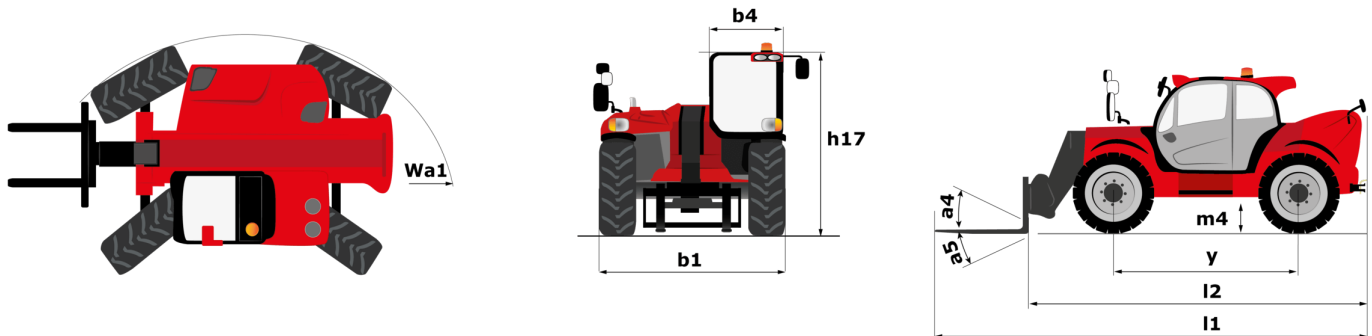
MHT 790



 **MANITOU**
HANDLING YOUR WORLD

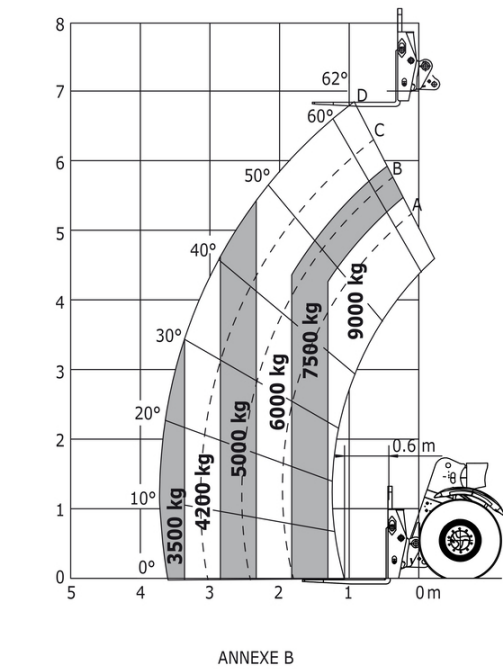
| Capacities | | Metric | Imperial |
|---|-----------|---|---|
| Max. capacity | | 9000 kg | 19842 lb |
| Load center of gravity | c | 600 mm | 24 in |
| Max. lifting height | | 6.84 m | 22 ft 5 in |
| Maximum outreach | | 3.72 m | 12 ft 2 in |
| Weight and dimensions | | | |
| Overall length | l1 | 5.27 m | 17 ft 4 in |
| Unladen weight (with forks) | | 13160 kg | 29013 lb |
| Ground clearance | m4 | 0.40 m | 1 ft 4 in |
| Wheelbase | y | 2.87 m | 9 ft 5 in |
| Length to face of forks | l2 | 5.27 m | 17 ft 3 in |
| Overall width | b1 | 2.47 m | 8 ft 1 in |
| Overall height | h17 | 2.47 m | 8 ft 1 in |
| Overall cab width | b4 | 0.93 m | 3 ft 1 in |
| Tilt-up angle | a4 | 12 ° | 12 ° |
| Tilt-down angle | a5 | 125 ° | 125 ° |
| External turning radius (over tyres) | Wa1 | 4.88 m | 16 ft |
| Outer turning radius (with forks) | b15 | 5.59 m | 18 ft 4 in |
| Forks length / width / section | l / e / s | 1200 mm x 200 mm x 60 mm | 47 in x 8 in x 2 in |
| Wheels | | | |
| Standard tires | | Aeolus - TLAG P23 - 445/65 R22,5 | Aeolus - TLAG P23 - 445/65 R22,5 |
| Number of front wheels / rear wheels | | 2 / 2 | 2 / 2 |
| Steering wheels (front / rear) | | 2 / 2 | 2 / 2 |
| Drive wheels (front / rear) | | 2 / 2 | 2 / 2 |
| Steering mode | | 2 wheel steer, 4 wheel steer, Crab mode | 2 wheel steer, 4 wheel steer, Crab mode |
| Engine | | | |
| Engine brand | | John Deere | John Deere |
| Engine norm | | Stage IV, Tier 4 final | Stage IV, Tier 4 final |
| Engine model | | 4045PWL | 4045PWL |
| Number of cylinders / Capacity of cylinders | | 4 - 4500 cm³ | 4 - 275 in³ |
| I.C. Engine power rating / Power | | 141 Hp / 104 kW | 141 Hp / 104 kW |
| Max. torque / Engine rotation | | 534 Nm@1500 rpm | 394 ft/lbs@1500 rpm |
| Engine cooling system | | Water | Water |
| Battery voltage | | 12 V | 12 V |
| Drawbar pull | | 10905 daN | 10905 daN |
| Transmission | | | |
| Transmission type | | Hydrostatic | Hydrostatic |
| Number of gears (forward / reverse) | | 2 / 2 | 2 / 2 |
| Max. travel speed | | 30 km/h | 19 mph |
| Parking brake | | Automatic Negative Hand-brake | Automatic Negative Hand-brake |
| Service brake | | Oil bath | Oil bath |
| Gradeability (laden / unladen) | | 37.40 % / 48.10 % | 37.40 % / 48.10 % |
| Hydraulics | | | |
| Hydraulic pump type | | Variable displacement pump | Variable displacement pump |
| Hydraulic flow - Pressure | | 180 l/min - 270 bar | 48 US gpm - 3916 PSI |
| Tank capacities | | | |
| Engine oil | | 13 l | 3 US gal |
| Fuel tank | | 147 l | 39 US gal |
| Diesel Exhaust fluid (AdBlue® type) | | 12 l | 3 US gal |
| Noise and vibration | | | |
| Noise to environment (LWA) | | 103 dB | 103 dB |
| Vibration on hands/arms | | < 2.50 m/s² | < 2.50 m/s² |
| Miscellaneous | | | |
| Cab certification | | Cabin ROPS - FOPS level 2 | Cabin ROPS - FOPS level 2 |
| Controls | | JSM | JSM |

MHT 790 - Dimensional drawing

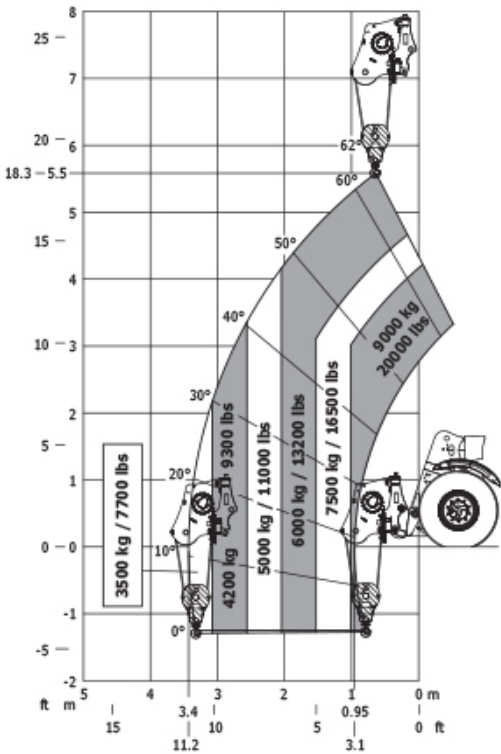


MHT 790 - Load chart

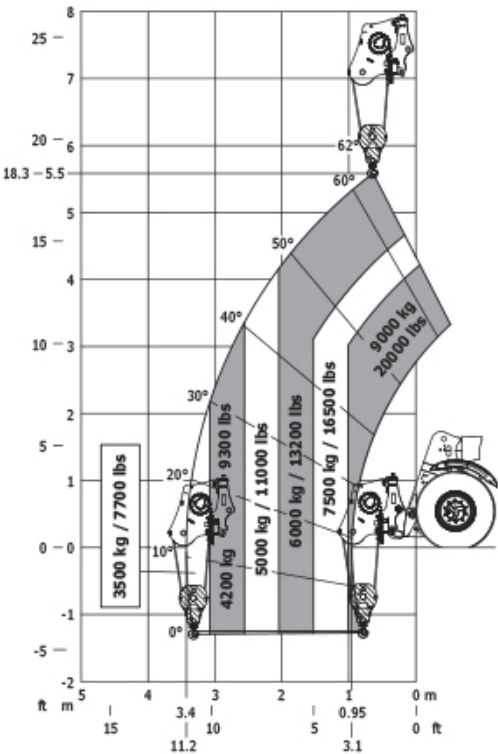
Machine on tires with forks LC 600 mm Metric



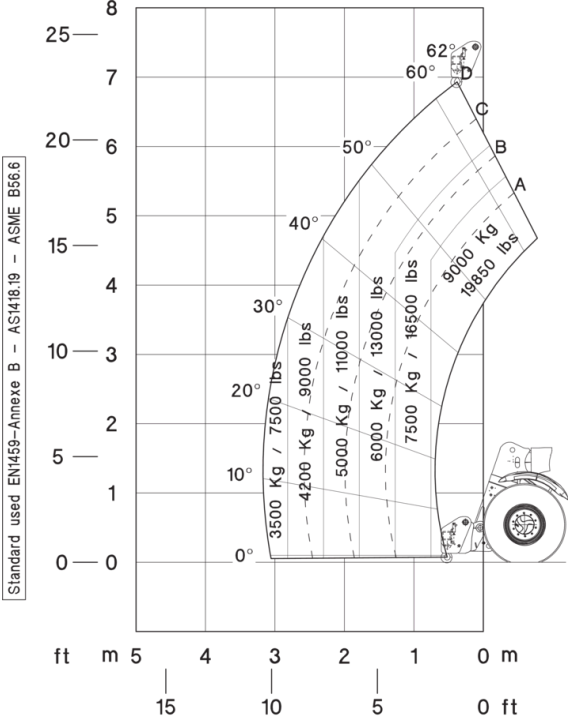
Machine on tires with winch 9000 kg (Imperial)



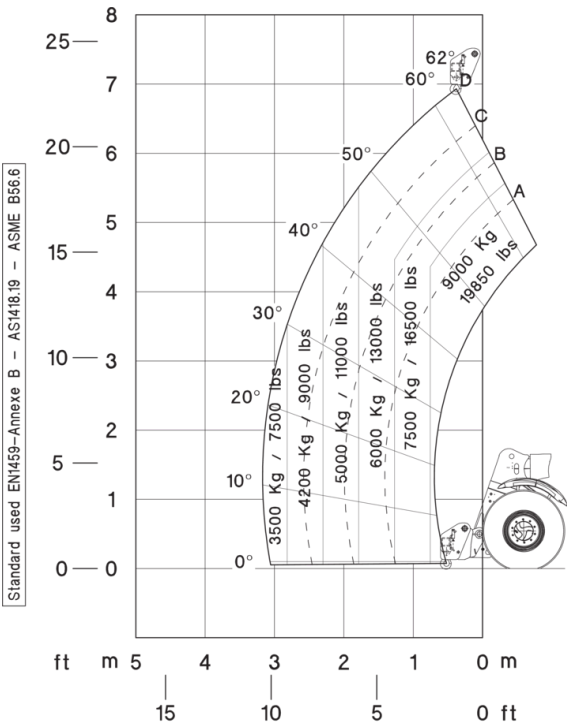
Machine on tires with winch 9000 kg (Metric)



Machine on tires with jib Imperial



Machine on tires with jib Metric





Head Office

B.P. 249 - 430 rue de l'Aubinière

44150 Ancenis Cedex - France

Tel: +33 (0)2 40 09 10 11 - Fax: +33 (0)2 40 09 10 97

www.manitou.com



This publication provides a description of the configuration versions and options for Manitou products, which may differ for equipment. The equipment presented in this brochure may be part of a series, as an option, or it may not be available, depending on the versions. Manitou reserves the right, at any time and without notice, to amend the specifications described and represented. The specifications provided do not bind the manufacturer. For more details, please contact your Manitou agent. This is not a contractually binding document. The presentation of the products is not contractually binding. List of specifications non-exhaustive. The logos as well as the visual identity of the company are owned by Manitou and cannot be used without authorisation. All rights reserved. The photos and diagrams contained in this brochure are only provided for consultation and information purposes.

MANITOU BF SA - Limited company with board of directors - Share capital: 39,668,399 euros - 857 802 508 RCS Nantes