

Technical sheet :

# MHT 14350

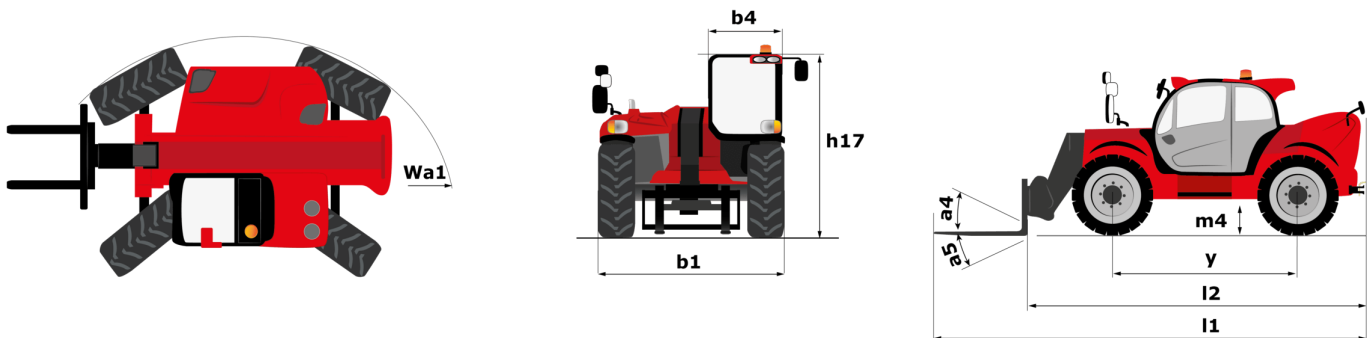
---

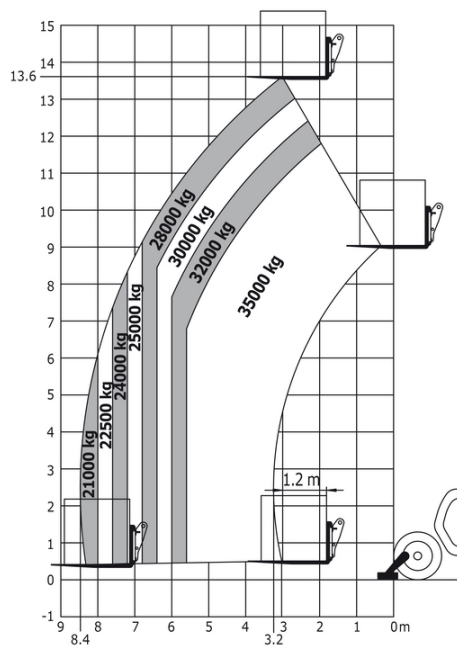


 **MANITOU**  
HANDLING YOUR WORLD

Capacities		Metric	Imperial
Max. capacity		35000 kg	77162 lb
Load center of gravity	c	1200 mm	47 in
Max. lifting height		13.60 m	44 ft 7 in
Max. outreach		8.50 m	27 ft 11 in
Weight and dimensions			
Overall length	l1	10.93 m	35 ft 10 in
Unladen weight (with forks)		69000 kg	152119 lb
Ground clearance	m4	0.69 m	2 ft 3 in
Wheelbase	y	5.70 m	18 ft 8 in
Length to face of forks	l2	10.93 m	35 ft 10 in
Overall width	b1	3.53 m	11 ft 7 in
Overall height	h17	3.82 m	12 ft 6 in
Tilt-down angle	a5	107 °	107 °
Tilt-up angle	a4	15 °	15 °
External turning radius (over tyres)	Wa1	7.32 m	24 ft
Outer turning radius (with forks)	b15	10.07 m	33 ft
Forks length / width / section	l / e / s	2400 mm x 300 mm / 135 mm	94 in x 12 in / 5 in
Frame leveling corrector	a9	8 °	8 °
Wheels			
Standard tires		24.00 R35	24.00 R35
Number of rear wheels		2	2
Steering wheels (front / rear)		2 / 2	2 / 2
Drive wheels (front / rear)		2 / 2	2 / 2
Steering mode		2 wheel steer, 4 wheel steer, Crab mode	2 wheel steer, 4 wheel steer, Crab mode
Engine			
Engine brand		Mercedes	Mercedes
Engine norm		Stage IV / Tier 4 Final	Stage IV / Tier 4 Final
Engine model		OM 936 LA	OM 936 LA
Number of cylinders / Capacity of cylinders		6 - 7200 cm³	6 - 439 in³
I.C. Engine power rating / Power		350 Hp / 260 kW	350 Hp / 260 kW
Max. torque / Engine rotation		1600 Nm@1600 rpm	1180 ft/lbs@1600 rpm
Engine cooling system		Water	Water
Battery voltage		24 V	24 V
Drawbar pull		33000 daN	33000 daN
Transmission			
Transmission type		Hydrostatic with Powershift	Hydrostatic with Powershift
Number of gears (forward / reverse)		3 / 3	3 / 3
Max. travel speed		25 km/h	16 mph
Parking brake		Automatic Negative Hand-brake	Automatic Negative Hand-brake
Service brake		Hydraulic	Hydraulic
Hydraulics			
Hydraulic pump type		Variable displacement pump	Variable displacement pump
Hydraulic flow - Pressure		400 l/min - 350 bar	106 US gpm - 5076 PSI
Tank capacities			
Engine oil		29 l	8 US gal
Hydraulic oil		760 l	201 US gal
Fuel tank		720 l	190 US gal
Diesel Exhaust fluid (AdBlue® type)		63 l	17 US gal
Noise and vibration			
Noise at driving position (LpA)		80 dB	80 dB
Noise to environment (LwA)		107 dB	107 dB
Vibration on hands/arms		< 2.50 m/s²	< 2.50 m/s²
Miscellaneous			
Safety cab homologation		ROPS - FOPS level 2 cab	ROPS - FOPS level 2 cab
Controls		JSM	JSM
Attachment recognition system (E-Reco)		Standard	Standard

## MHT 14350 - Dimensional drawing







**Head Office**

B.P. 249 - 430 rue de l'Aubinière

44150 Ancenis Cedex - France

Tel: +33 (0)2 40 09 10 11 - Fax: +33 (0)2 40 09 10 97

[www.manitou.com](http://www.manitou.com)



This publication provides a description of the configuration versions and options for Manitou products, which may differ for equipment. The equipment presented in this brochure may be part of a series, as an option, or it may not be available, depending on the versions. Manitou reserves the right, at any time and without notice, to amend the specifications described and represented. The specifications provided do not bind the manufacturer. For more details, please contact your Manitou agent. This is not a contractually binding document. The presentation of the products is not contractually binding. List of specifications non-exhaustive. The logos as well as the visual identity of the company are owned by Manitou and cannot be used without authorisation. All rights reserved. The photos and diagrams contained in this brochure are only provided for consultation and information purposes.

MANITOU BF SA - Limited company with board of directors - Share capital: 39,668,399 euros - 857 802 508 RCS Nantes