

Technical sheet :

# MT 625 HA

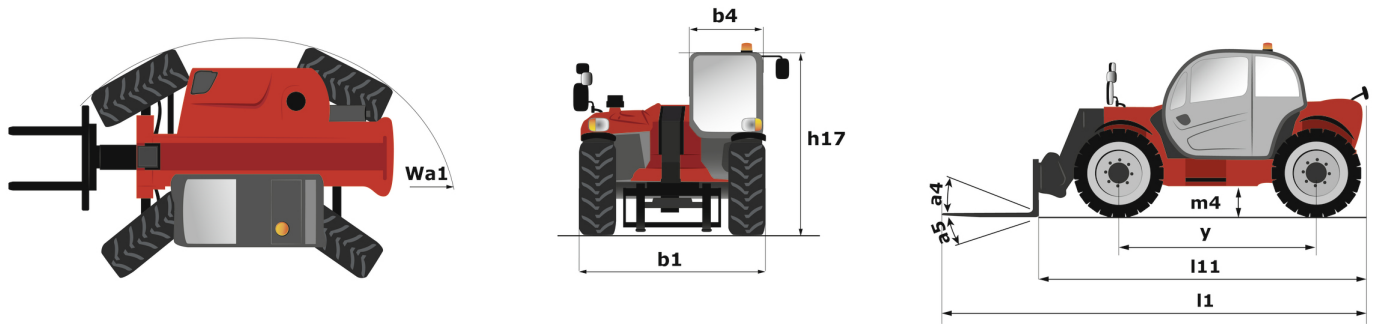


 **MANITOU**  
HANDLING YOUR WORLD

Capacities		Metric	Imperial
Max. capacity		2500 kg	5512 lb
Max. lifting height		5.85 m	19 ft 2 in
Maximum outreach		3.40 m	11 ft 2 in
Breakout force with bucket		3427 daN	3427 daN
Weight and dimensions			
Overall length to carriage	l11	3.90 m	12 ft 10 in
Length to face of forks	l2	3.90 m	12 ft 10 in
Overall width	b1	1.81 m	5 ft 11 in
Overall height	h17	1.92 m	6 ft 4 in
Wheelbase	y	2.30 m	7 ft 7 in
Ground clearance	m4	0.33 m	1 ft 1 in
Overall cab width	b4	0.79 m	2 ft 7 in
Tilt-up angle	a4	12 °	12 °
Tilt-down angle	a5	117 °	117 °
External turning radius (over tyres)	Wa1	3.31 m	10 ft 10 in
Unladen weight		5130 kg	11310 lb
Overall weight		4800 kg	10582 lb
Tires type		Pneumatic	Pneumatic
Standard tires		Solideal 12-16,5 12PR SKS XT TL	Solideal 12-16,5 12PR SKS XT TL
Forks length / width / section	l / e / s	1200 mm x 125 mm x 45 mm	47 in x 5 in x 2 in
Performances			
Lifting		7.80 s	7.80 s
Lowering		5.50 s	5.50 s
Extension		5.40 s	5.40 s
Retraction		3.50 s	3.50 s
Crowd		3 s	3 s
Dump		3 s	3 s
Engine			
Engine brand		Kubota	Kubota
Engine norm		Stage V	Stage V
Engine model		V3307-CR-TE5B	V3307-CR-TE5B
Number of cylinders / Capacity of cylinders		4 - 3331 cm³	4 - 203 in³
I.C. Engine power rating - Power		75 Hp / 55.40 kW	75 Hp / 55.40 kW
Max. torque / Engine rotation		265 Nm @ 1400 rpm	195 ft/lbs @ 1400 rpm
Drawbar pull (Laden)		3550 daN	3550 daN
Electric circuit			
Battery voltage		12 V	12 V
12V Battery capacity		110 Ah	110 Ah
Transmission			
Transmission type		Hydrostatic	Hydrostatic
Number of gears (forward / reverse)		2 / 2	2 / 2
Max. travel speed		24.90 km/h	15 mph
Max. travel speed (may vary according to applicable regulations)		25 km/h	16 mph
Parking brake		Automatic negative parking brake	Automatic negative parking brake
Service brake		Oil-Immersed multi-discs braking on front axles	Oil-Immersed multi-discs braking on front axles
Axle Manufacturer		Dana	Dana
Hydraulics			
Hydraulic pump type		Gear pump	Gear pump
Hydraulic flow / Pressure		90 l/min-235 bar	24 US gpm-3408 PSI
Tank capacities			
Engine oil		11.20 l	3 US gal
Hydraulic oil		115 l	30 US gal
Hydraulic tank capacity		11.20 l	3 US gal
Fuel tank		63 l	17 US gal
Noise and vibration			
Noise at driving position (LpA)		76 dB	76 dB
Noise to environment (LwA)		104 dB	104 dB
Vibration on hands/arms		< 2.50 m/s²	< 2.50 m/s²
Compatible platform			
Platform capacity	Q	365 kg	805 lb
Number of people		3	3
Platform dimensions (length x width)	lp / ep	2000 m x 1200 m	6561 ft 8 in x 3937 ft
Platform weight*		410 kg	904 lb
Miscellaneous			
Steering wheels (front / rear)		2 / 2	2 / 2
Drive wheels (front / rear)		2 / 2	2 / 2
Cab certification		ROPS - FOPS cab (level 1)	ROPS - FOPS cab (level 1)
Controls		JSM	JSM
Additional information		Data indicated with basket basket, except max. capacity, lifting height and offset.	Data indicated with basket basket, except max. capacity, lifting height and offset.

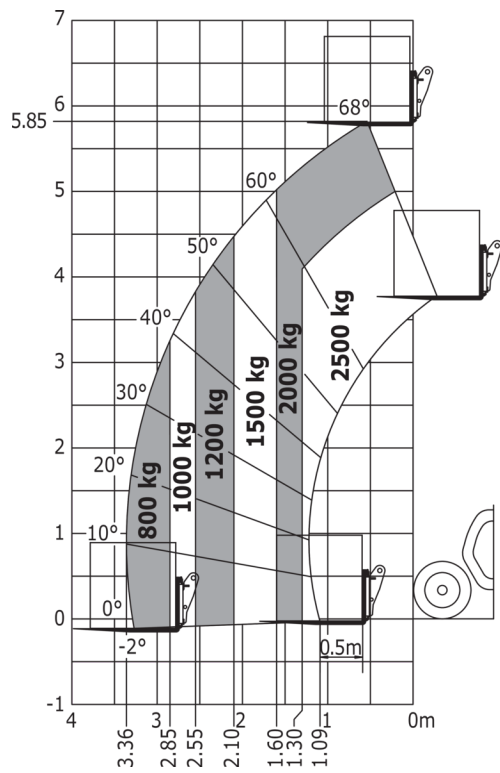
Data indicated with basket basket, except max. capacity, lifting height and offset.

## MT 625 HA - Dimensional drawing

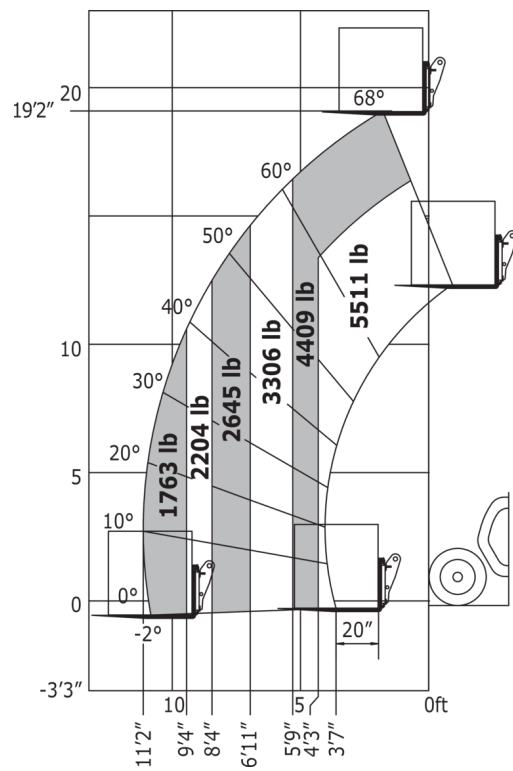


### MT 625 HA - Load chart

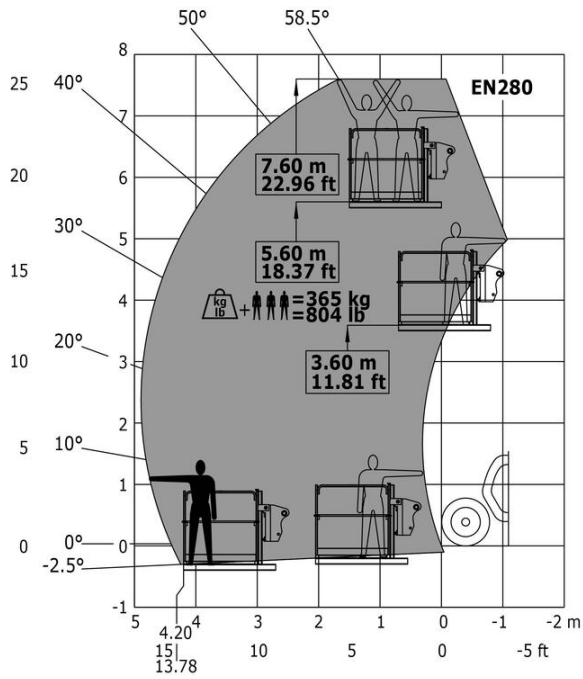
Machine on tires with forks Metric



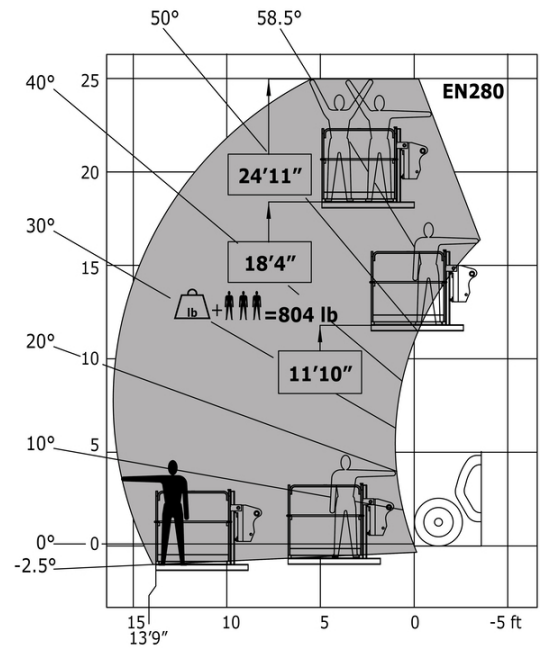
Machine on tires with forks Imperial



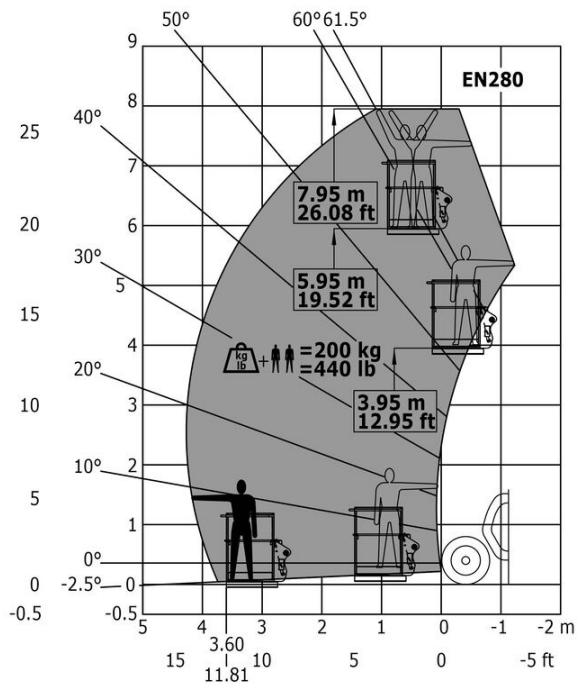
Machine with Man basket - Metric



Machine with Man basket - Imperial



Load Chart metric





**Head Office**

B.P. 249 - 430 rue de l'Aubinière

44150 Ancenis Cedex - France

Tel: +33 (0)2 40 09 10 11 - Fax: +33 (0)2 40 09 10 97

[www.manitou.com](http://www.manitou.com)



This publication provides a description of the configuration versions and options for Manitou products, which may differ for equipment. The equipment presented in this brochure may be part of a series, as an option, or it may not be available, depending on the versions. Manitou reserves the right, at any time and without notice, to amend the specifications described and represented. The specifications provided do not bind the manufacturer. For more details, please contact your Manitou agent. This is not a contractually binding document. The presentation of the products is not contractually binding. List of specifications non-exhaustive. The logos as well as the visual identity of the company are owned by Manitou and cannot be used without authorisation. All rights reserved. The photos and diagrams contained in this brochure are only provided for consultation and information purposes.

MANITOU BF SA - Limited company with board of directors - Share capital: 39,668,399 euros - 857 802 508 RCS Nantes