

Technical sheet :

MLT-X 737-130 PS+



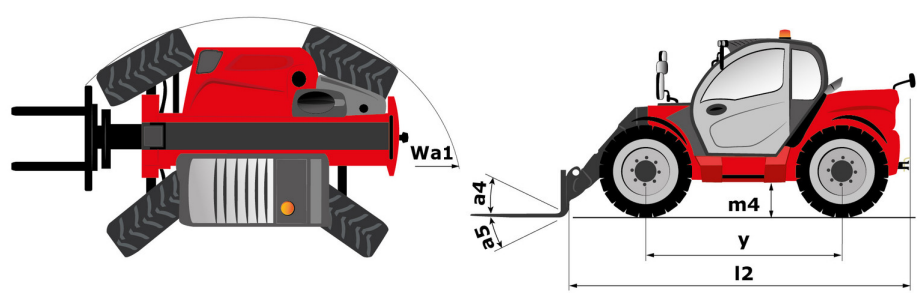
 **MANITOU**
HANDLING YOUR WORLD

Capacities		Metric	Imperial
Max. capacity	Q	3700 kg	8157 lb
Max. lifting height	h3	6.90 m	22 ft 8 in
Maximum outreach		3.90 m	12 ft 10 in
Reach at max. height		1 m	3 ft 3 in
Breakout force with bucket		5520 daN	5520 daN
Weight and dimensions			
Unladen weight (with forks)		7540 kg	16623 lb
Ground clearance	m4	0.41 m	1 ft 4 in
Wheelbase	y	2.81 m	9 ft 3 in
Overall length to carriage (with hitch)	l11	4.97 m	16 ft 4 in
Front overhang		1.21 m	4 ft
Overall width	b1	2.39 m	7 ft 10 in
Overall cab width	b4	0.95 m	3 ft 1 in
Overall height	h17	2.38 m	7 ft 10 in
Tilt-down angle	a5	134 °	134 °
Tilt-up angle	a4	12 °	12 °
External turning radius (over tyres)	Wa1	3.92 m	12 ft 10 in
Standard tires		Alliance - A580 - 460/70 R24 159A8	Alliance - A580 - 460/70 R24 159A8
Drive wheels (front / rear)		2 / 2	2 / 2
Steering wheels (front / rear)		2 / 2	2 / 2
Performances			
Lifting		7.60 s	7.60 s
Lowering		5.40 s	5.40 s
Extension		7.80 s	7.80 s
Retraction		5.90 s	5.90 s
Crowd		3.80 s	3.80 s
Dump		3 s	3 s
Engine			
Engine brand		Deutz	Deutz
Engine norm		Stage IIIA	Stage IIIA
Max. fuel sulphur content		2000 ppm	2000 ppm
Engine model		TCD 3,6 l	TCD 3,6 l
Number of cylinders - Capacity of cylinders		4 - 3621 cm³	4 - 221 in³
I.C. Engine power rating / Power		129 Hp / 95 kW	129 Hp / 95 kW
Max. torque / Engine rotation		500 Nm @1600 rpm	369 ft/lbs @1600 rpm
Drawbar pull (Laden)		7950 daN	7950 daN
Reversible fan		Standard	Standard
Engine cooling system		4 radiators (water + intercooler + hydraulic oil + transmission oil)	4 radiators (water + intercooler + hydraulic oil + transmission oil)
Transmission			
Transmission type		Torque converter	Torque converter
Gearbox		Powershift Plus (M-Shift)	Powershift Plus (M-Shift)
Number of gears (forward / reverse)		6 / 3	6 / 3
Max. travel speed (may vary according to applicable regulations)		40 km/h	25 mph
Differential lock		Limited slip differential on front axle	Limited slip differential on front axle
Parking brake		Manual	Manual
Service brake		Oil-immersed multi-discs on front & rear axles	Oil-immersed multi-discs on front & rear axles
Hydraulics			
Hydraulic pump type		Variable displacement pump	Variable displacement pump
Hydraulic flow - Pressure		150 l/min - 270 bar	40 US gpm - 3916 PSI
Flow sharing distributor		Standard	Standard
Tank capacities			
Hydraulic tank capacity		135 l	36 US gal
Fuel tank		120 l	32 US gal
Noise and vibration			
Noise at driving position (LpA) tested following NF EN 12053 norm		75 dB	75 dB
Noise to environment (LWA)		106 dB	106 dB
Vibration on hands/arms		< 2.50 m/s²	< 2.50 m/s²
Miscellaneous			
Tractor homologation		Tractor homologation	Tractor homologation
Cab certification		Cabin ROPS - FOPS level 2	Cabin ROPS - FOPS level 2
Controls		JSM	JSM

Optional tires tab

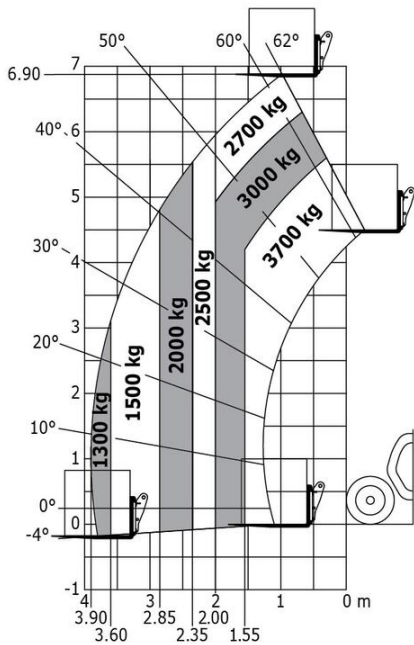
	Overall height	Overall width
ALLIANCE - A580 - 460/70 R24 159A8	7 ft 10 in (2.38 m)	7 ft 10 in (2.39 m)
TRELLEBORG - TH400 - 460/70 R24 159A8	7 ft 9 in (2.37 m)	7 ft 10 in (2.40 m)
TRELLEBORG - TH400 - 500/70 R24 164A8	7 ft 10 in (2.39 m)	7 ft 11 in (2.42 m)
MICHELIN - XMCL - 500/70 R24 164A8	7 ft 10 in (2.39 m)	8 ft (2.43 m)
MICHELIN - BIBLOAD - 460/70 R24 159A8	7 ft 9 in (2.37 m)	7 ft 10 in (2.40 m)
MICHELIN - BIBLOAD - 500/70 R24 164A8	7 ft 10 in (2.39 m)	8 ft (2.43 m)
MICHELIN - XHA - 15.5 R25 158A2	7 ft 9 in (2.37 m)	7 ft 10 in (2.40 m)
NOKIAN - TRI STEEL - 460/65 R24 156A8	7 ft 9 in (2.36 m)	7 ft 10 in (2.40 m)
MICHELIN - XMCL - 460/70 R24 159A8	7 ft 9 in (2.37 m)	7 ft 10 in (2.40 m)
VREDESTEIN - ENDURION - 460/70 R24 159A8	7 ft 10 in (2.38 m)	7 ft 11 in (2.41 m)
VREDESTEIN - ENDURION - 500/70 R24 164A8	7 ft 11 in (2.41 m)	8 ft (2.44 m)

MLT-X 737-130 PS+ - Dimensional drawing

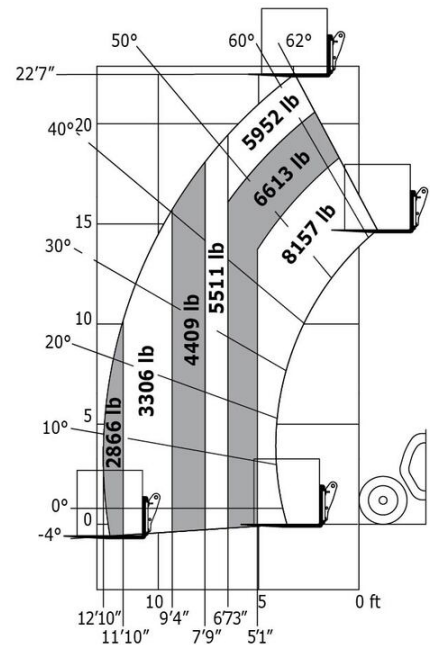


MLT-X 737-130 PS+ - Load chart

Machine on tires with forks Metric



Machine on tires with forks Imperial





Head Office

B.P. 249 - 430 rue de l'Aubinière

44150 Ancenis Cedex - France

Tel: +33 (0)2 40 09 10 11 - Fax: +33 (0)2 40 09 10 97

www.manitou.com



This publication provides a description of the configuration versions and options for Manitou products, which may differ for equipment. The equipment presented in this brochure may be part of a series, as an option, or it may not be available, depending on the versions. Manitou reserves the right, at any time and without notice, to amend the specifications described and represented. The specifications provided do not bind the manufacturer. For more details, please contact your Manitou agent. This is not a contractually binding document. The presentation of the products is not contractually binding. List of specifications non-exhaustive. The logos as well as the visual identity of the company are owned by Manitou and cannot be used without authorisation. All rights reserved. The photos and diagrams contained in this brochure are only provided for consultation and information purposes.

MANITOU BF SA - Limited company with board of directors - Share capital: 39,668,399 euros - 857 802 508 RCS Nantes