

Technical sheet :

MRT-X 2550 PRIVILEGE PLUS



 **MANITOU**
HANDLING YOUR WORLD

| Capacities | | Metric | Imperial |
|--|-----------|---|---|
| Max. capacity | | 4999 kg | 11021 lb |
| Max. lifting height | | 24.70 m | 81 ft |
| Maximum outreach | | 21.40 m | 70 ft 3 in |
| Weight and dimensions | | | |
| Overall length (with forks) | l1 | 9.04 m | 29 ft 8 in |
| Length to face of forks | l2 | 7.84 m | 25 ft 9 in |
| Overall width | b1 | 2.49 m | 8 ft 2 in |
| Overall height | h17 | 3.05 m | 10 ft |
| Overall cab width | b4 | 0.99 m | 3 ft 3 in |
| Outer frame turning radius | Wa3 | 5.23 m | 17 ft 2 in |
| Ground clearance | m4 | 0.35 m | 1 ft 2 in |
| Wheelbase | y | 3.05 m | 10 ft |
| Tilt-up angle | a4 | 13 ° | 13 ° |
| Tilt-down angle | a5 | 102 ° | 102 ° |
| Turret rotation | | 360 ° | 360 ° |
| Overall weight | | 18900 kg | 41667 lb |
| Forks length / width / section | l / e / s | 1200 mm x 150 mm x 50 mm | 47 in x 6 in x 2 in |
| Wheels | | | |
| Tires type | | Pneumatic | Pneumatic |
| Standard tires | | 445/65 R22,5 | 445/65 R22,5 |
| Drive wheels (front / rear) | | 2 / 2 | 2 / 2 |
| Stabilisers | | | |
| Stabilizers Type | | Telescopic Duplex | Telescopic Duplex |
| Controls with stabs | | Stabs Commands Individual or Simultaneous | Stabs Commands Individual or Simultaneous |
| Engine | | | |
| Engine brand | | Mercedes | Mercedes |
| Engine norm | | Stage IIIA / Tier 3 | Stage IIIA / Tier 3 |
| Engine model | | OM 904 LA. E3A/2 | OM 904 LA. E3A/2 |
| I.C. Engine power rating / Power / Engine rotation | | 150 Hp / 110 kW @ 1600 rpm | 150 Hp / 110 kW @ 1600 rpm |
| Max. torque / Engine rotation (min) | | 580 Nm @ 1200 rpm | 428 ft/lbs @ 1200 rpm |
| Number of cylinders - Capacity of cylinders | | 4 - 4250 cm³ | 4 - 259 in³ |
| Injection | | engine Injection direct | engine Injection direct |
| Engine cooling system | | Water | Water |
| Electric circuit | | | |
| Number of batteries / Battery voltage | | 2 x 12 V | 2 x 12 V |
| 12V Battery capacity | | 120 Ah | 120 Ah |
| Transmission | | | |
| Transmission type | | Hydrostatic | Hydrostatic |
| Number of gears (forward / reverse) | | 2 / 2 | 2 / 2 |
| Max. travel speed | | 40 km/h | 25 mph |
| Drawbar pull | | 8700 daN | 8700 daN |
| Parking brake | | Automatic Negative Hand-brake | Automatic Negative Hand-brake |
| Service brake | | Hydraulic | Hydraulic |
| Hydraulics | | | |
| Hydraulic pump type | | Gear pump | Gear pump |
| Hydraulic flow | | 115 l/min | 30 US gpm |
| Hydraulic Pressure | | 275 bar | 3989 PSI |
| Tank capacities | | | |
| Engine oil | | 14 l | 4 US gal |
| Fuel tank | | 305 l | 81 US gal |
| Noise and vibration | | | |
| Noise at driving position (LpA) | | 79.70 dB | 79.70 dB |
| Noise to environment (LWA) | | 108 dB | 108 dB |
| Vibration on hands/arms | | < 2.50 m/s² | < 2.50 m/s² |
| Miscellaneous | | | |
| Steering wheels (front / rear) | | 2 / 2 | 2 / 2 |
| Controls | | 2 Joysticks | 2 Joysticks |
| Cab certification | | Cabin ROPS - FOPS level 2 | Cabin ROPS - FOPS level 2 |
| Attachment recognition system (E-Reco) | | Standard | Standard |

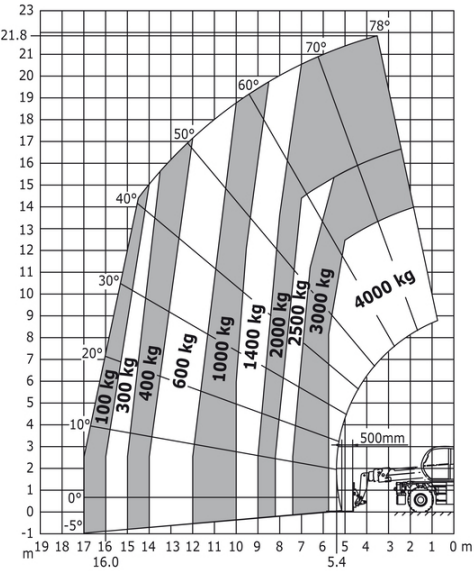
MRT-X 2550 Privilege Plus - Dimensional drawing



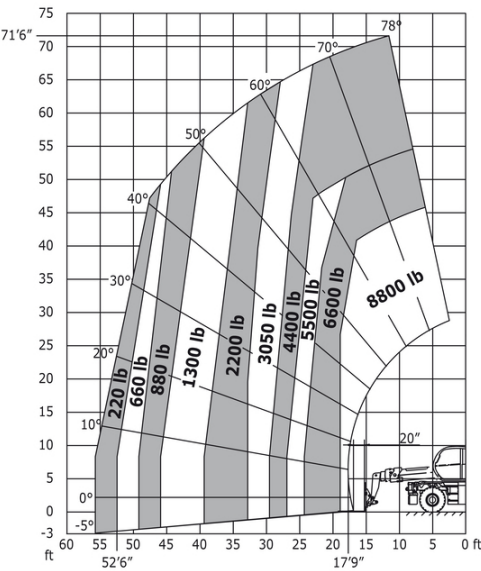
| Other data | | Metric | Imperial |
|---|-----|---------|------------|
| Length of frame | l14 | 5.35 m | 17 ft 7 in |
| Wheelbase | y | 3.05 m | 10 ft |
| Ground clearance | m4 | 0.35 m | 1 ft 2 in |
| Counterweight offset (turret at 90°) | a7 | 3.18 m | 10 ft 5 in |
| Tilt-up angle | a4 | 13 ° | 13 ° |
| Tilt-down angle | a5 | 102 ° | 102 ° |
| Overall length at stabilisers | l12 | 5.19 m | 17 ft |
| Outer frame turning radius | Wa3 | 5.23 m | 17 ft 2 in |
| Outer turning radius (with forks) | b15 | 6.92 m | 22 ft 8 in |
| Overall width with stabilisers extended | b7 | 5.55 m | 18 ft 3 in |
| Overall height | h17 | 3.05 m | 10 ft |
| Frame leveling corrector | a9 | +/- 8 ° | +/- 8 ° |
| Ground clearance under front tires on stabilizers | m5 | 0.23 m | 9 in |

MRT-X 2550 Privilege Plus - Load chart

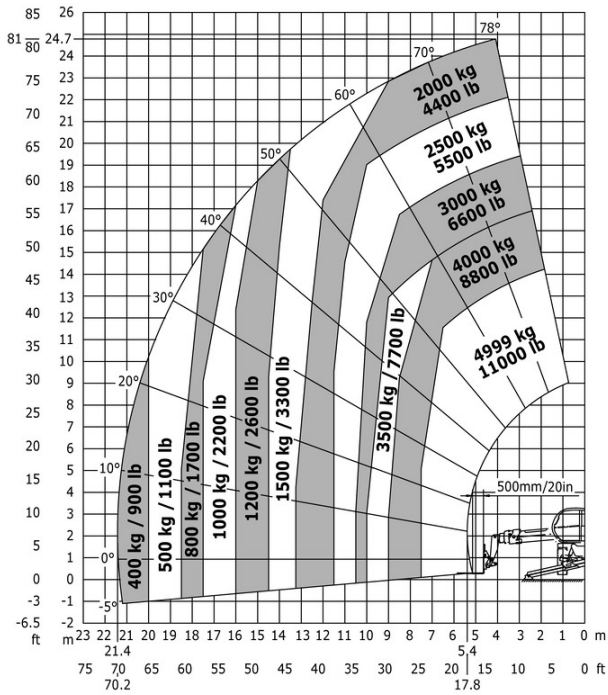
Machine on tires with forks Metric



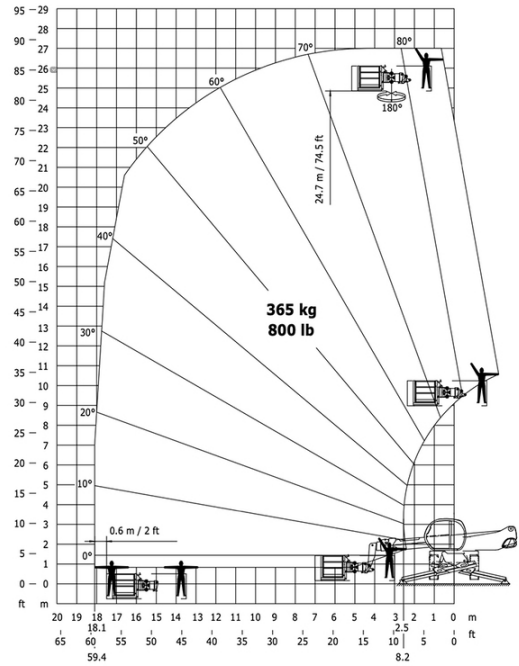
Machine on tires with forks Imperial



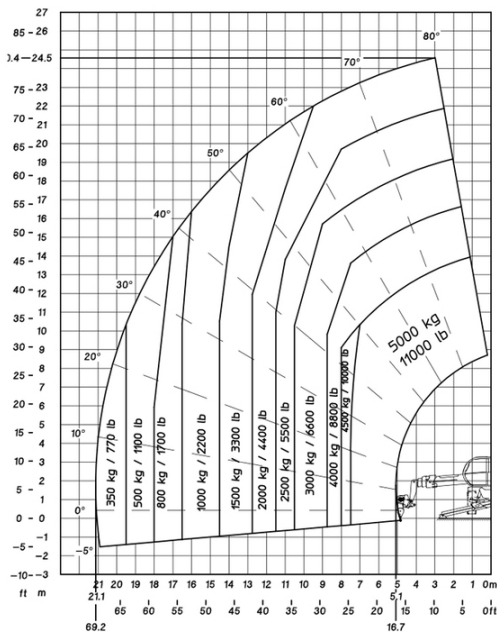
Machine on lowered stabilisers with forks Metric



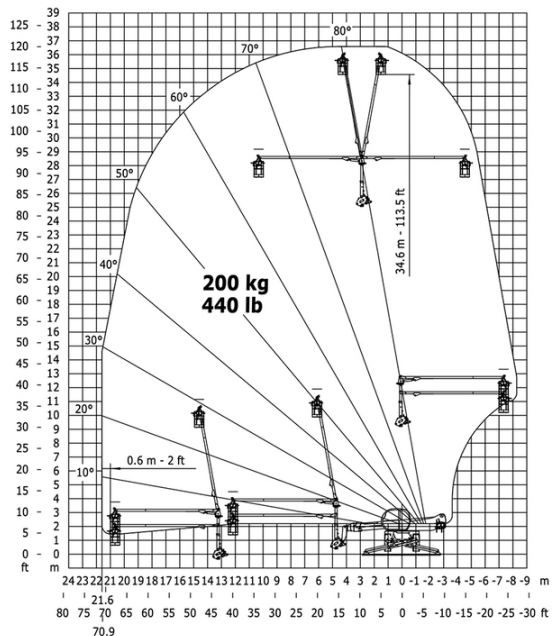
Machine on lowered stabilisers with 365/1000 kg platform Imperial



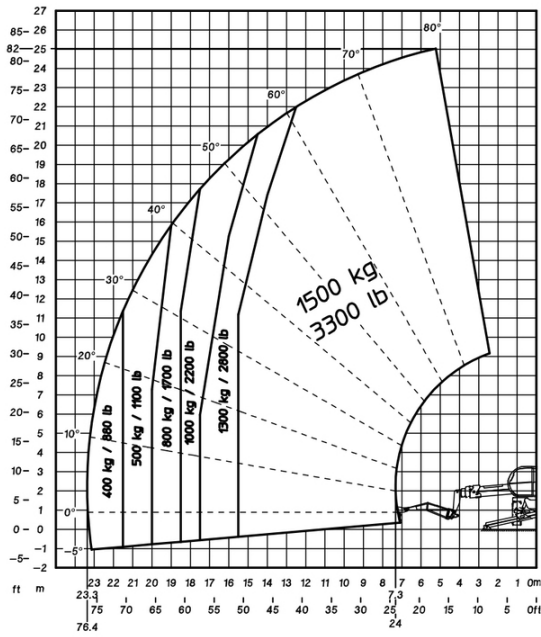
Machine on lowered stabilisers with winch 5000 kg Metric



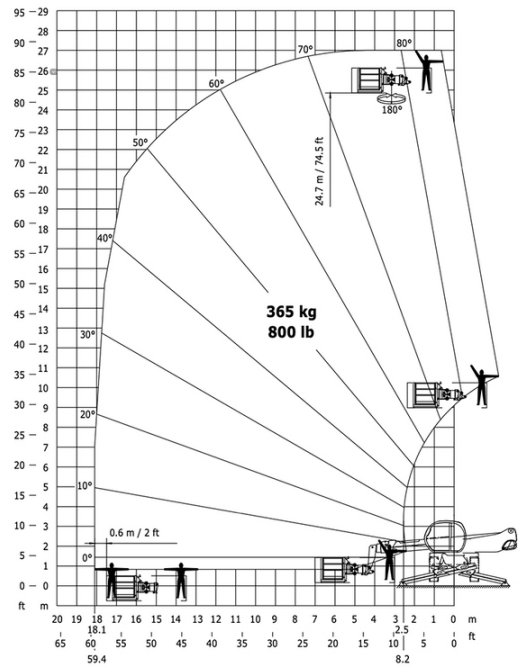
Machine on lowered stabilisers with 3D positive / negative Imperial



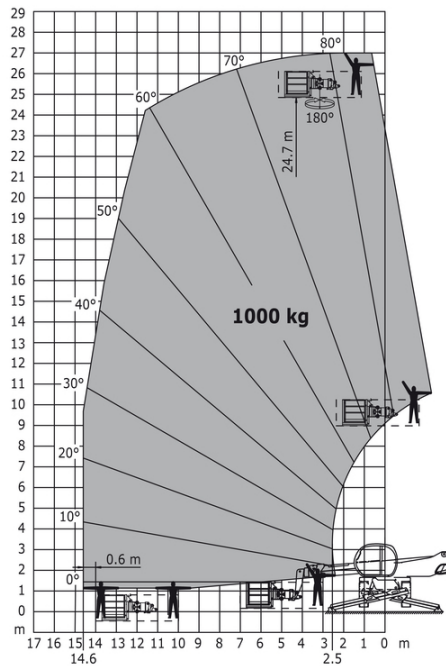
Machine on lowered stabilisers with 1500 kg jib Metric



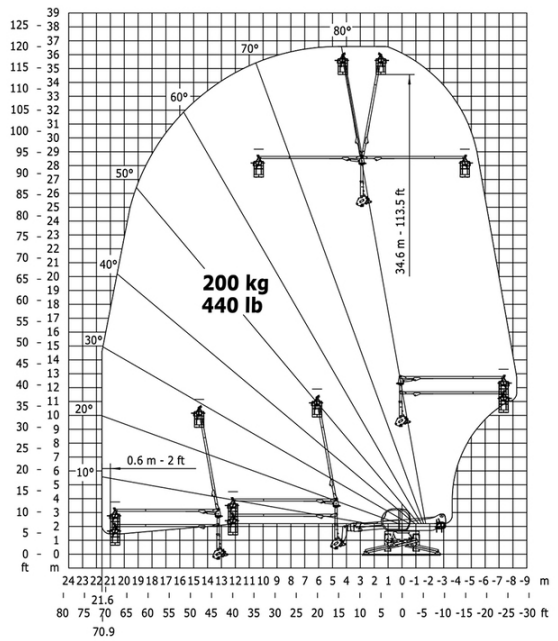
Machine on lowered stabilisers with 365 kg platform Metric



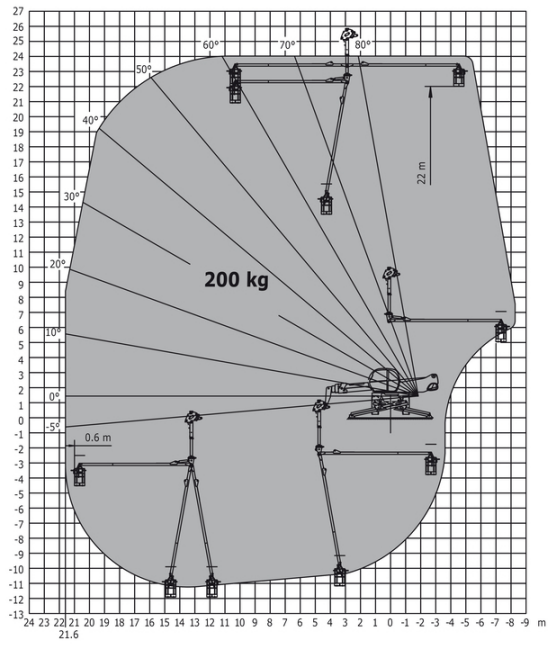
Machine on lowered stabilisers with 1000 kg platform Metric



Machine on lowered stabilisers with 3D positive Metric



Machine on lowered stabilisers with 3D negative Metric





Head Office

B.P. 249 - 430 rue de l'Aubinière

44150 Ancenis Cedex - France

Tel: +33 (0)2 40 09 10 11 - Fax: +33 (0)2 40 09 10 97

www.manitou.com



This publication provides a description of the configuration versions and options for Manitou products, which may differ for equipment. The equipment presented in this brochure may be part of a series, as an option, or it may not be available, depending on the versions. Manitou reserves the right, at any time and without notice, to amend the specifications described and represented. The specifications provided do not bind the manufacturer. For more details, please contact your Manitou agent. This is not a contractually binding document. The presentation of the products is not contractually binding. List of specifications non-exhaustive. The logos as well as the visual identity of the company are owned by Manitou and cannot be used without authorisation. All rights reserved. The photos and diagrams contained in this brochure are only provided for consultation and information purposes.

MANITOU BF SA - Limited company with board of directors - Share capital: 39,668,399 euros - 857 802 508 RCS Nantes