

Technical sheet :

# 220 TJ ST5

---

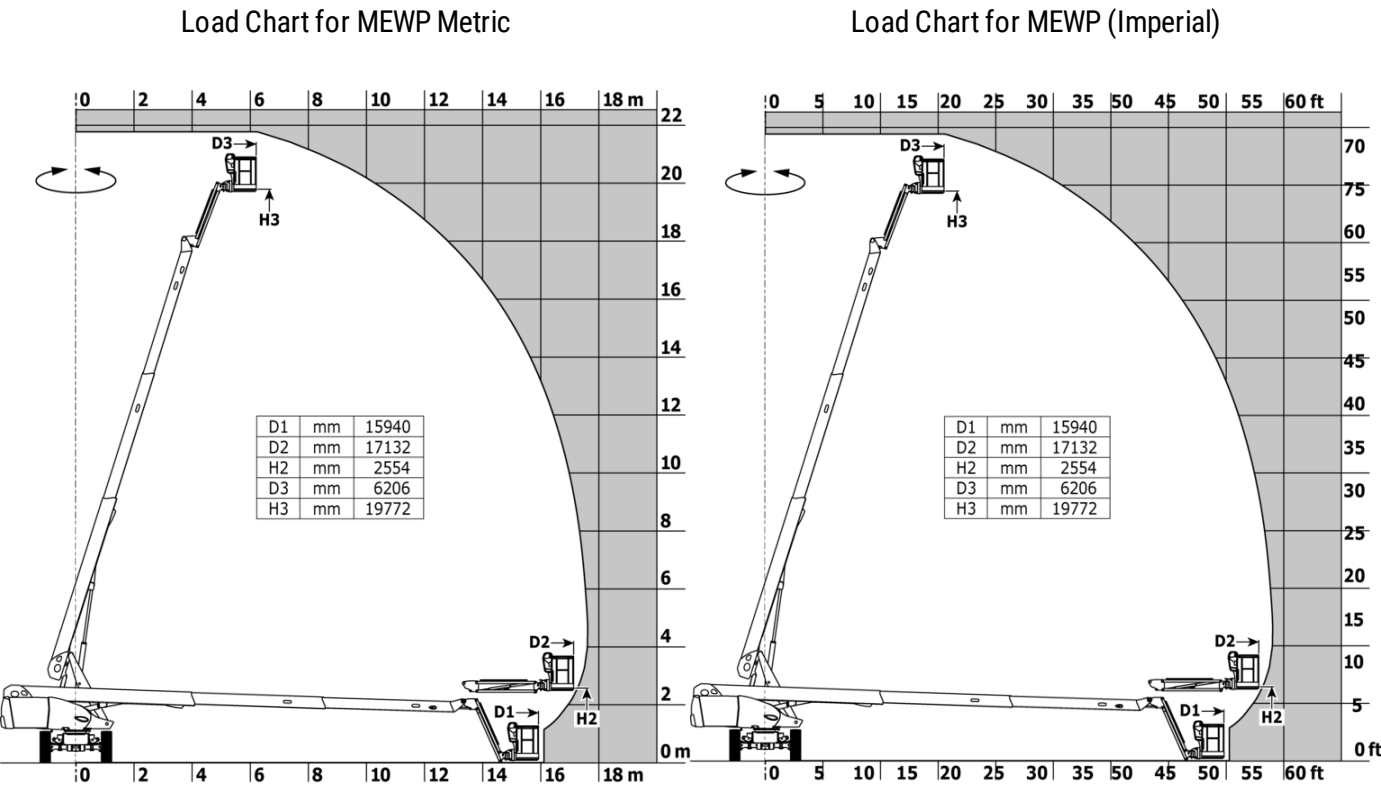


 **MANITOU**  
HANDLING YOUR WORLD

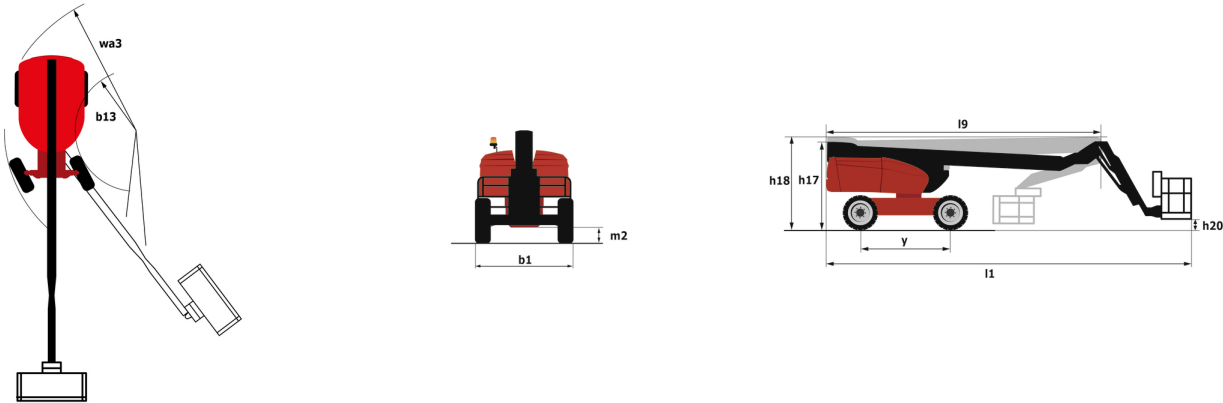
Capacities		Metric	Imperial
Working height	h21	21.77 m	71 ft 5 in
Floor height (access)	h20	0.39 m	1 ft 3 in
Platform height	h7	19.77 m	64 ft 10 in
Max. outreach		17.63 m	57 ft 10 in
Pendular arm rotation (top / bottom)		+69 ° / -66 °	+69 ° / -66 °
Platform capacity	Q	230 kg	507 lb
Turret rotation		360 °	360 °
Platform rotation (right / left)		90 ° / 90 °	90 ° / 90 °
Number of people (indoor / outdoor)		2 / 2	2 / 2
Weight and dimensions			
Platform weight*		11850 kg	26125 lb
Platform dimensions (length x width)	lp / ep	2.10 m x 0.76 m	6 ft 11 in x 2 ft 6 in
Overall length	l1	9.81 m	32 ft 2 in
Overall width	b1	2.48 m	8 ft 2 in
Overall height	h17	2.66 m	8 ft 9 in
Overall length (stowed)	l9	7.29 m	23 ft 11 in
Overall height (stowed) **	h18	2.72 m	8 ft 11 in
Jib length	l13	2 m	6 ft 7 in
Counterweight offset (turret at 90°)	a7	1.35 m	4 ft 5 in
External turning radius	Wa3	6.19 m	20 ft 4 in
Ground clearance at centre of wheelbase	m2	0.44 m	1 ft 5 in
Wheelbase	y	2.80 m	9 ft 2 in
Performances			
Drive speed - stowed		4.40 km/h	3 mph
Drive speed - raised		1 km/h	0.62 mph
Gradeability		40 %	40 %
Permissible leveling		4 °	4 °
Wheels			
Tires type		Solid Tires Cured-On	Solid Tires Cured-On
Drive wheels (front / rear)		2 / 2	2 / 2
Steering wheels (front / rear)		2 / 0	2 / 0
Braking wheels (front / rear)		0 / 2	0 / 2
Engine/Battery			
Engine brand / model		Yanmar - 3TNV88C	Yanmar - 3TNV88C
Engine norm		Stage V	Stage V
I.C. Engine power rating / Power		37 Hp / 27.50 kW	37 Hp / 27.50 kW
Miscellaneous			
Ground Pressure		18.20 dan/cm2	264 PSI
Hydraulic Pressure		340 bar	4931 PSI
Hydraulic tank capacity		94 l	25 US gal
Fuel tank		72 l	19 US gal
Noise to environment (LwA)		< 105 dB	< 105 dB
Standards compliance			
This machine is in compliance with:		European directives: 2006/42/EC- Machinery (revised EN280:2013) - 2004/108/EC (EMC) - 2006/95/EC (Low voltage)	European directives: 2006/42/EC- Machinery (revised EN280:2013) - 2004/108/EC (EMC) - 2006/95/EC (Low voltage)

\*Varies according to options and standards of the country to which the machine is delivered

220 TJ ST5 - Load chart



220 TJ ST5 - Dimensional drawing



# Equipment

Standard
230V Predisposition
4 simultaneous movements
4 wheel drive
Audible alarm and illuminated indicator lamp (leveling, overload, lowering)
Backup electrical pump
Connected machine
Continuous turret rotation
Differential locking on rear axle
Easy fast slinging system
Electronic platform compensation
Emergency stop button in platform and on frame
Engine mounted on sliding platform
Engine with DPF
Front axle with limited slip
Fuel gauge with low level indicator
Fully galvanized basket with demountable floor
Hour meter
Integrated diagnostic assistance
LED rotating beacon
LS pump
Large color screen on turret
Leveling unlocking
Oscillating front axle
Proportional controls
Stop & Go system

Optional
110 or 230V plug with differential circuit breaker
Battery blanket
Battery cut-off
Biodegradable hydraulic oil - Grade 32
Engine Block Heater
Galvanized basket 2.100 mm / 6'11" with lateral door
Hydraulic oil for cold temperature
Key lock on fuel tank
Key lock on turret cover
Non marking solid tyres
On-board generator (3,5 or 5 kW)
Personalized paintwork
Remote control for transport
Safety kit - Harness + helmet
Safety valve
Screen protection on the lower box control
Secondary Protection System (SPS)
Socket 230 V + differential circuit breaker
Solid tyres cured-on
Spark arrester
Turret orientation information
Water predisposition
Working light



**Head Office**

B.P. 249 - 430 rue de l'Aubinière

44150 Ancenis Cedex - France

Tel: +33 (0)2 40 09 10 11 - Fax: +33 (0)2 40 09 10 97

[www.manitou.com](http://www.manitou.com)



This publication provides a description of the configuration versions and options for Manitou products, which may differ for equipment. The equipment presented in this brochure may be part of a series, as an option, or it may not be available, depending on the versions. Manitou reserves the right, at any time and without notice, to amend the specifications described and represented. The specifications provided do not bind the manufacturer. For more details, please contact your Manitou agent. This is not a contractually binding document. The presentation of the products is not contractually binding. List of specifications non-exhaustive. The logos as well as the visual identity of the company are owned by Manitou and cannot be used without authorisation. All rights reserved. The photos and diagrams contained in this brochure are only provided for consultation and information purposes.

MANITOU BF SA - Limited company with board of directors - Share capital: 39,668,399 euros - 857 802 508 RCS Nantes