

Technical sheet :

# MT 1440



 **MANITOU**  
HANDLING YOUR WORLD

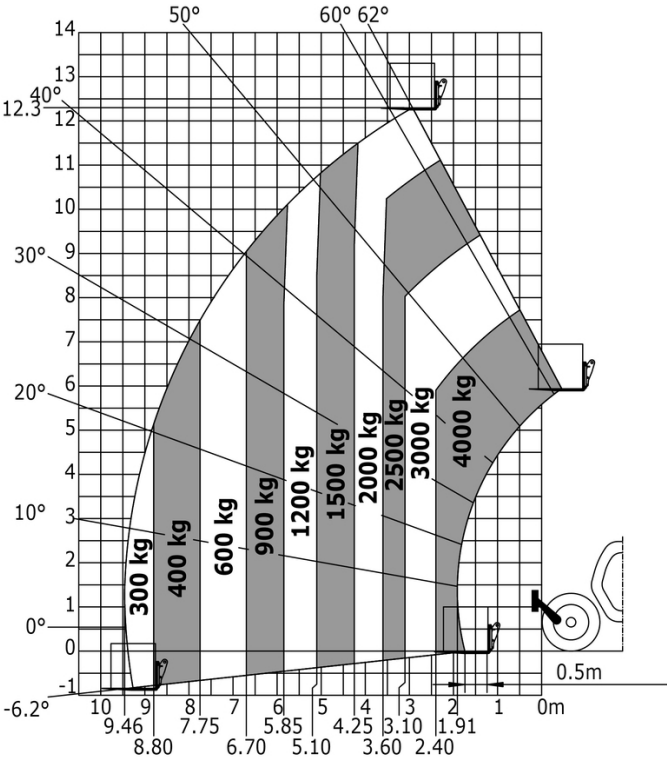
| Capacities                                  |           | Metric   | Imperial   |
|---|-----------|--|--|
| Max. capacity                               |           | 4000 kg  | 8818 lb  |
| Max. lifting height                         |           | 13.53 m  | 44 ft 5 in   |
| Max. outreach                               |           | 9.46 m   | 31 ft  |
| Breakout force with bucket                  |           | 7895 daN   | 7895 daN   |
| Weight and dimensions                       |           |  |  |
| Overall length to carriage                  | l11       | 6.02 m   | 19 ft 9 in   |
| Length to face of forks                     | l2        | 6.13 m   | 20 ft 1 in   |
| Overall width                               | b1        | 2.36 m   | 7 ft 9 in  |
| Overall height                              | h17       | 2.45 m   | 8 ft   |
| Wheelbase                                   | y         | 3.07 m   | 10 ft 1 in   |
| Ground clearance                            | m4        | 0.37 m   | 1 ft 3 in  |
| Overall cab width                           | b4        | 0.89 m   | 2 ft 11 in   |
| Tilt-up angle                               | a4        | 12 °   | 12 °   |
| Tilt-down angle                             | a5        | 114 °  | 114 °  |
| External turning radius (over tyres)        | Wa1       | 3.94 m   | 12 ft 11 in  |
| Unladen weight (with forks)                 |           | 10940 kg   | 24119 lb   |
| Overall weight                              |           | 11200 kg   | 24692 lb   |
| Tires type                                  |           | Pneumatic  | Pneumatic  |
| Standard tires                              |           | Alliance 400/80 - 24 - 162A8                           | Alliance 400/80 - 24 - 162A8                           |
| Forks length / width / section              | l / e / s | 1200 mm x 125 mm / 50 mm                               | 47 in x 5 in / 2 in                                    |
| Frame leveling corrector                    | a9        | 63 °   | 63 °   |
| Performances                                |           |  |  |
| Lifting                                     |           | 15.90 s  | 15.90 s  |
| Lowering                                    |           | 12.10 s  | 12.10 s  |
| Extension                                   |           | 17.10 s  | 17.10 s  |
| Retraction                                  |           | 12.70 s  | 12.70 s  |
| Crowd                                       |           | 4.30 s   | 4.30 s   |
| Dump  |           | 3.90 s   | 3.90 s   |
| Engine                                      |           |  |  |
| Engine brand                                |           | Perkins  | Perkins  |
| Engine norm                                 |           | Stage IV / Tier 4 Final                                | Stage IV / Tier 4 Final                                |
| Engine model                                |           | 854F-E34TAN  | 854F-E34TAN  |
| Number of cylinders / Capacity of cylinders |           | 4 - 3400 cm³   | 4 - 207 in³  |
| I.C. Engine power rating - Power            |           | 100 Hp / 75 kW   | 100 Hp / 75 kW   |
| Max. torque / Engine rotation               |           | 430 Nm @ 1400 rpm                                      | 317 ft/lbs @ 1400 rpm                                  |
| Drawbar pull (Laden)                        |           | 8090 daN   | 8090 daN   |
| Electric circuit                            |           |  |  |
| 12V Battery capacity                        |           | 120 Ah   | 120 Ah   |
| Transmission                                |           |  |  |
| Transmission type                           |           | Torque converter                                       | Torque converter                                       |
| Number of gears (forward / reverse)         |           | 4 / 4  | 4 / 4  |
| Max. travel speed                           |           | 24.90 km/h   | 15 mph   |
| Parking brake                               |           | Automatic parking brake                                | Automatic parking brake                                |
| Service brake                               |           | Oil-immersed multi-discs braking on front & rear axles | Oil-immersed multi-discs braking on front & rear axles |
| Hydraulics                                  |           |  |  |
| Hydraulic pump type                         |           | Gear pump  | Gear pump  |
| Hydraulic flow / Pressure                   |           | 170 l/min-270 bar                                      | 45 US gpm-3916 PSI                                     |
| Tank capacities                             |           |  |  |
| Engine oil                                  |           | 7.50 l   | 2 US gal   |
| Hydraulic oil                               |           | 135 l  | 36 US gal  |
| Fuel tank                                   |           | 140 l  | 37 US gal  |
| DEF tank capacity                           |           | 21.60 l  | 6 US gal   |
| Noise and vibration                         |           |  |  |
| Noise at driving position (LpA)             |           | 78 dB  | 78 dB  |
| Noise to environment (LwA)                  |           | 103 dB   | 103 dB   |
| Vibration on hands/arms                     |           | < 2.50 m/s²  | < 2.50 m/s²  |
| Miscellaneous                               |           |  |  |
| Steering wheels (front / rear)              |           | 2 / 2  | 2 / 2  |
| Drive wheels (front / rear)                 |           | 2 / 2  | 2 / 2  |
| Safety / Safety cab homologation            |           | Standard EN 15000 / ROPS - FOPS level 2 cab            | Standard EN 15000 / ROPS - FOPS level 2 cab            |
| Controls                                    |           | JSM  | JSM  |

MT 1440 - Dimensional drawing

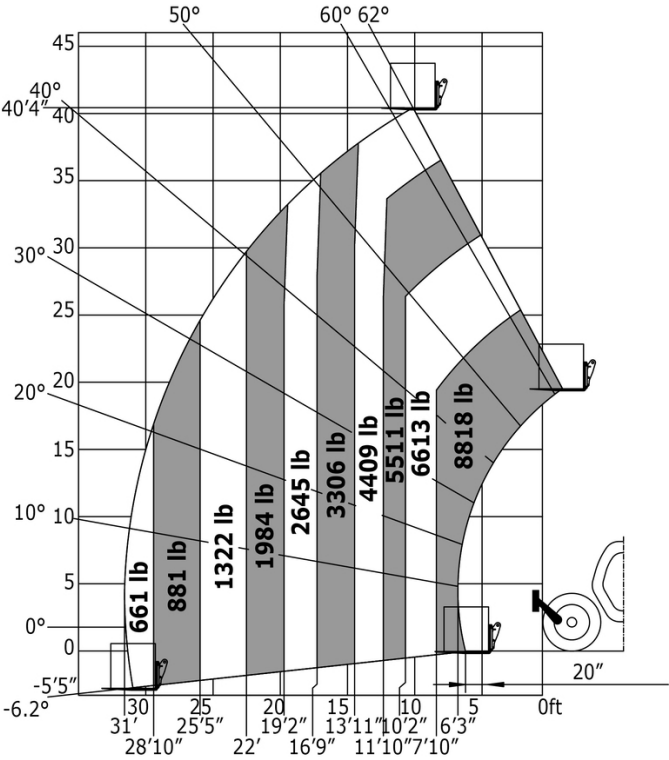


MT 1440 - Load chart

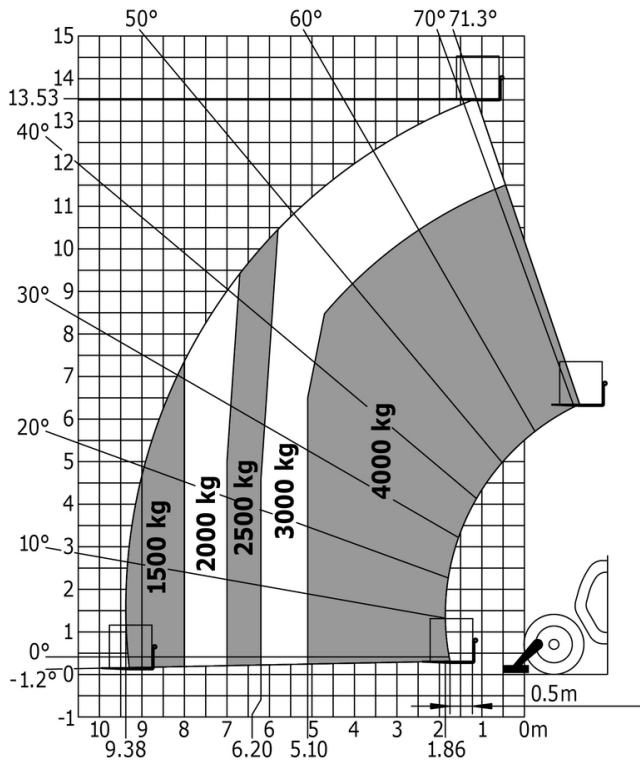
Machine on tyres with forks - with levelling device Metric



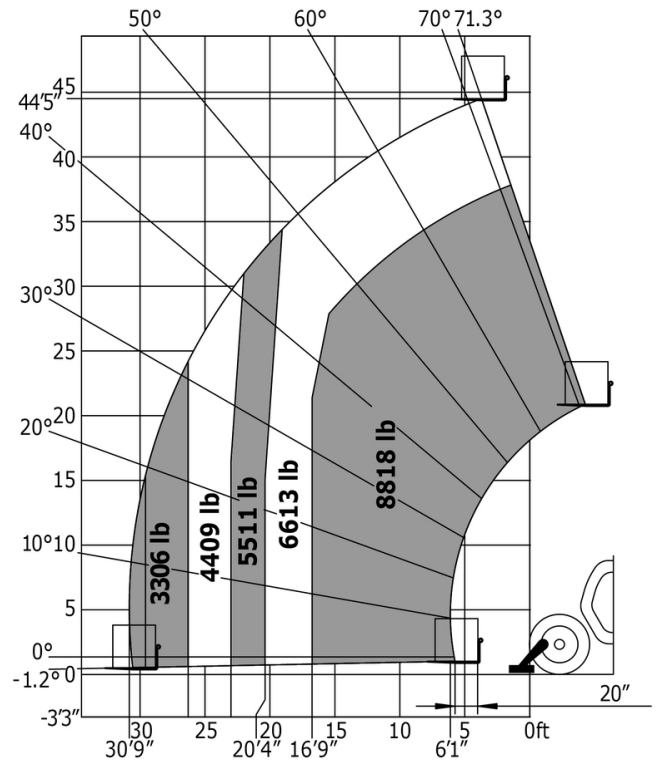
Machine on tyres with forks Imperial



Machine on lowered stabilisers with forks Metric



Machine on lowered stabilisers with forks Imperial





**Head Office**

B.P. 249 - 430 rue de l'Aubinière

44150 Ancenis Cedex - France

Tel: +33 (0)2 40 09 10 11 - Fax: +33 (0)2 40 09 10 97

[www.manitou.com](http://www.manitou.com)



This publication provides a description of the configuration versions and options for Manitou products, which may differ for equipment. The equipment presented in this brochure may be part of a series, as an option, or it may not be available, depending on the versions. Manitou reserves the right, at any time and without notice, to amend the specifications described and represented. The specifications provided do not bind the manufacturer. For more details, please contact your Manitou agent. This is not a contractually binding document. The presentation of the products is not contractually binding. List of specifications non-exhaustive. The logos as well as the visual identity of the company are owned by Manitou and cannot be used without authorisation. All rights reserved. The photos and diagrams contained in this brochure are only provided for consultation and information purposes.

MANITOU BF SA - Limited company with board of directors - Share capital: 39,668,399 euros - 857 802 508 RCS Nantes