

Technical sheet :

# AETJ 43

OXYGEN  
by MANITOU



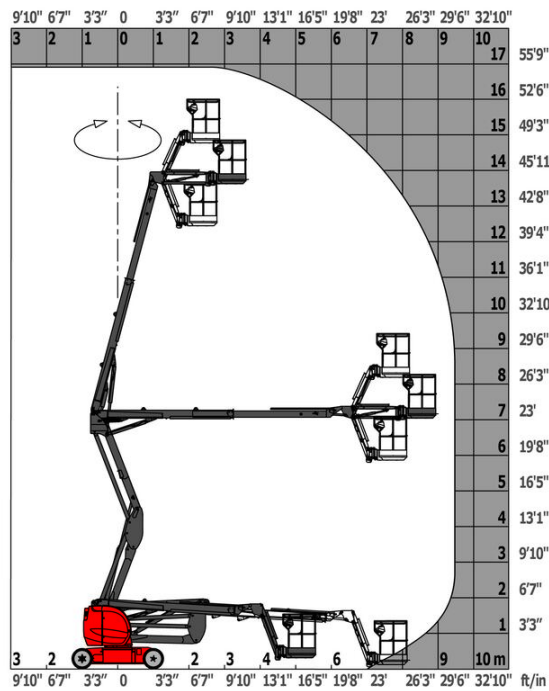
 **MANITOU**  
HANDLING YOUR WORLD

Capacities		Metric	Imperial
Working height	h21	14.99 m	49 ft 2 in
Platform height	h7	12.98 m	42 ft 7 in
Maximum outreach		7.60 m	24 ft 11 in
Overhang		7.07 m	23 ft 2 in
Pendular arm rotation (top / bottom)		+65 ° / -65 °	+65 ° / -65 °
Platform capacity	Q	227 kg	500 lb
Turret rotation		355 °	355 °
Platform rotation (right / left)		66 ° / 59 °	66 ° / 59 °
Number of people (indoor / outdoor)		2 / 2	2 / 2
Weight and dimensions			
Platform weight*		7370 kg	16248 lb
Platform dimensions (length x width)	lp / ep	1.20 m x 0.92 m	3 ft 11 in x 3 ft
Floor height (access)	h20	0.40 m	1 ft 4 in
Overall length	l1	6.05 m	19 ft 10 in
Overall width	b1	1.50 m	4 ft 11 in
Overall height	h17	1.97 m	6 ft 6 in
Overall length (stowed)	l9	4.40 m	14 ft 5 in
Overall height (stowed)	h18 ***	2.08 m	6 ft 10 in
Jib length	l13	1.26 m	4 ft 2 in
Counterweight offset (turret at 90°)	a7	0.12 m	5 in
Counterweight Oversize / Reach		0.12 m	5 in
External turning radius	Wa3	3.96 m	13 ft
Ground clearance at centre of wheelbase	m2	0.14 m	6 in
Wheelbase	y	2 m	6 ft 7 in
Performances			
Drive speed - stowed		5 km/h	3 mph
Drive speed - raised		0.60 km/h	0.37 mph
Gradeability		22 %	22 %
Permissible leveling		3 °	3 °
Wheels			
Tires type		Solid non-marking tires	Solid non-marking tires
Standard tires		24 x 7.5 in / 600 x 190 mm	24 x 7.5 in / 600 x 190 mm
Drive wheels (front / rear)		0 / 2	0 / 2
Steering wheels (front / rear)		2 / 0	2 / 0
Braking wheels (front / rear)		0 / 2	0 / 2
Engine/Battery			
Electric engine power rating		2 x 4.50 kW	2 x 4.50 kW
Lift motor power		3.70 kW	3.70 kW
Battery voltage		48 V	48 V
Battery nominal voltage / capacity		48 V / 240 Ah	48 V / 240 Ah
Battery energy		11 kW/h	11 kW/h
On-board charger (V / A)		48 V / 30 A	48 V / 30 A
Miscellaneous			
Number of cycles with STD Battery (HIRD)		44	44
Ground Pressure		13.50 dan/cm2	196 PSI
Hydraulic Pressure		210 bar	3046 PSI
Hydraulic tank capacity		15 l	4 US gal
Vibration on hands/arms		< 0.52 m/s²	< 0.52 m/s²
Standards compliance			
This machine is in compliance with:		ANSI A92.20-2018 CSA B354.6 ICES-002-Issue 6 Standard Canadian EMC	ANSI A92.20-2018 CSA B354.6 ICES-002-Issue 6 Standard Canadian EMC

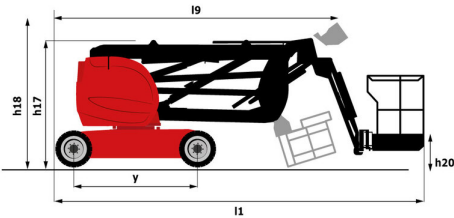
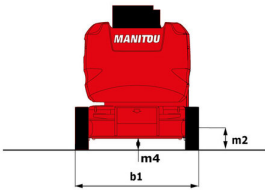
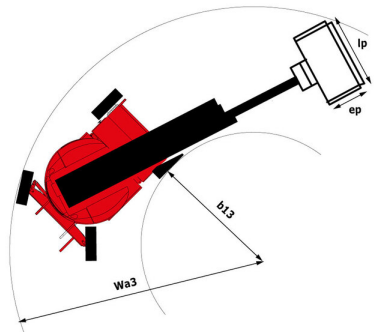
\*Varies according to options and standards of the country to which the machine is delivered

AETJ 43 - Load chart

Load Chart imperial



AETJ 43 - Dimensional drawing



# Equipment

## Standard

110 or 230V plug with differential circuit breaker  
Audible alarm and illuminated indicator lamp (leveling, overload, lowering)  
Battery charge indicator lamp  
CAN bus technology  
Drive safety orientation system  
Electric predisposition on the top of the boom  
Emergency stop button in platform and on frame  
Horn in the platform  
Hour meter  
Integrated diagnostic assistance  
Manual emergency lowering  
Multi-voltage integrated charger  
Negative-type braking on rear wheels  
Non-marking rubber tyres  
Platform access gate  
Proportional controls  
Tool box in platform  
Traction battery  
Travel possible at maximum height

## Optional

Biodegradable oil  
Cold weather kit  
Cold weather protection oil  
Easy Manager  
High capacity starting battery  
Lights  
Protective cover for control panel  
SMS : Safe Man System  
Working headlight in platform

**Head Office**

B.P. 249 - 430 rue de l'Aubinière

44150 Ancenis Cedex - France

Tel: +33 (0)2 40 09 10 11 - Fax: +33 (0)2 40 09 10 97

[www.manitou.com](http://www.manitou.com)

This publication provides a description of the configuration versions and options for Manitou products, which may differ for equipment. The equipment presented in this brochure may be part of a series, as an option, or it may not be available, depending on the versions. Manitou reserves the right, at any time and without notice, to amend the specifications described and represented. The specifications provided do not bind the manufacturer. For more details, please contact your Manitou agent. This is not a contractually binding document. The presentation of the products is not contractually binding. List of specifications non-exhaustive. The logos as well as the visual identity of the company are owned by Manitou and cannot be used without authorisation. All rights reserved. The photos and diagrams contained in this brochure are only provided for consultation and information purposes.

MANITOU BF SA - Limited company with board of directors - Share capital: 39,668,399 euros - 857 802 508 RCS Nantes