

Technical sheet :

ATJ 46



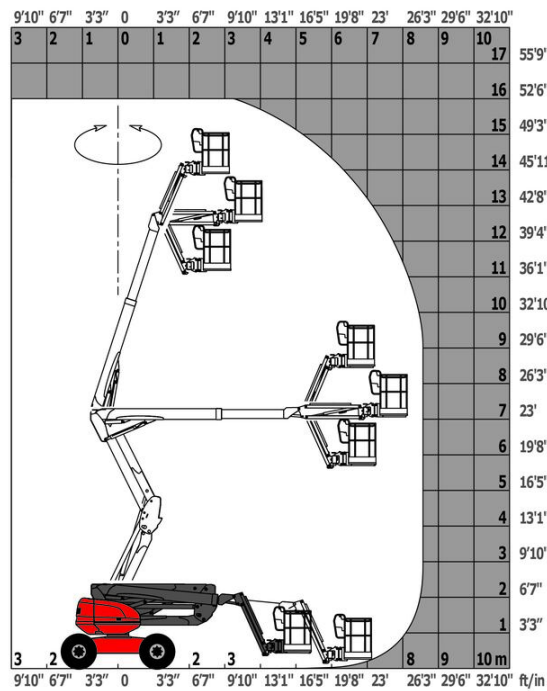
 **MANITOU**
HANDLING YOUR WORLD

Capacities		Metric	Imperial
Working height	h21	16.01 m	52 ft 6 in
Floor height (access)	h20	0.40 m	1 ft 4 in
Platform height	h7	14.01 m	46 ft
Max. outreach		8.30 m	27 ft 3 in
Overhang		7.50 m	24 ft 7 in
Pendular arm rotation (top / bottom)		+65 ° / -59.50 °	+65 ° / -59.50 °
Platform capacity	Q	227 kg	500 lb
Turret rotation		350 °	350 °
Platform rotation (right / left)		90 ° / 90 °	90 ° / 90 °
Number of people (indoor / outdoor)		2 / 2	2 / 2
Weight and dimensions			
Platform weight*		6090 kg	13426 lb
Platform dimensions (length x width)	lp / ep	2.10 m x 0.80 m	6 ft 11 in x 2 ft 7 in
Overall length	l1	6.68 m	21 ft 11 in
Overall width	b1	2.32 m	7 ft 7 in
Overall height	h17	2.37 m	7 ft 9 in
Overall length (stowed)	l9	4.49 m	14 ft 9 in
Overall height (stowed) **	h18	2.83 m	9 ft 3 in
Counterweight offset (turret at 90°)	a7	0.22 m	9 in
Counterweight Oversize / Reach		0.23 m	9 in
External turning radius	Wa3	5.17 m	17 ft
Ground clearance at centre of wheelbase	m2	0.36 m	1 ft 2 in
Wheelbase	y	2.20 m	7 ft 3 in
Performances			
Drive speed - stowed		5 km/h	3 mph
Drive speed - raised		1 km/h	0.62 mph
Gradeability		45 %	45 %
Wheels			
Tires type		Foam-filled	Foam-filled
Standard tires		834 x 298 mm	834 x 298 mm
Drive wheels (front / rear)		2 / 2	2 / 2
Steering wheels (front / rear)		2 / 0	2 / 0
Braking wheels (front / rear)		0 / 2	0 / 2
Engine/Battery			
Engine brand / model		Kubota - D1105-E4B	Kubota - D1105-E4B
Engine norm		Interim Tier 4, Stage IIIA, Stage V	Interim Tier 4, Stage IIIA, Stage V
I.C. Engine power rating / Power		24.80 Hp / 18.50 kW	24.80 Hp / 18.50 kW
Miscellaneous			
Ground Pressure		9.60 dan/cm2	139 PSI
Hydraulic Pressure		340 bar	4931 PSI
Hydraulic tank capacity		54 l	14 US gal
Fuel tank		52 l	14 US gal
Noise to environment (LWA)		< 105 dB	< 105 dB
Vibration on hands/arms		< 0.50 m/s²	< 0.50 m/s²
Daily consumption **		4.08 l	1 US gal
Standards compliance			
This machine is in compliance with:		ANSI A92.20-2018 CSA B354.6 ICES-002-Issue 6 Standard Canadian EMC	ANSI A92.20-2018 CSA B354.6 ICES-002-Issue 6 Standard Canadian EMC

*Varies according to options and standards of the country to which the machine is delivered

ATJ 46 - Load chart

Load Chart for MEWP (Imperial)



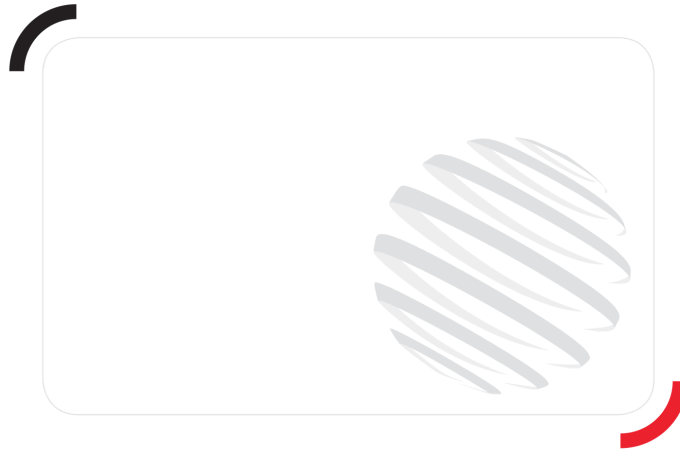
ATJ 46 - Dimensional drawing



Equipment

Standard
110 V American plug with differential circuit breaker
4 simultaneous movements
4 wheel drive
Audible alarm and illuminated indicator lamp (leveling, overload, lowering)
Basket 1,800 mm
Battery cut-off
CAN bus technology
Dead man pedal
Differential locking on rear axle
Drive safety orientation system
Easy Manager
Emergency stop button in platform and on frame
Flat Led Rotating Beacon
Front axle with limited slip
Fuel gauge with low level indicator
Fully galvanized basket with demountable floor
Integrated diagnostic assistance
Lift and drive
Lockable fuel cap
Management via engine speed bearing
Pendular arm
Proportional controls
Protective cover for control panel
Steer and rotate
Swinging gate on platform
Water heater

Optional
Biodegradable oil
Cold weather kit
Cold weather protection oil
Drive safety orientation system
Foam filled tyres
Lockable turret cover
On-board generator (3,5 or 5 kW)
SMS : Safe Man System
Water predisposition
Working light



Head Office

B.P. 249 - 430 rue de l'Aubinière

44150 Ancenis Cedex - France

Tel: +33 (0)2 40 09 10 11 - Fax: +33 (0)2 40 09 10 97

www.manitou.com



This publication provides a description of the configuration versions and options for Manitou products, which may differ for equipment. The equipment presented in this brochure may be part of a series, as an option, or it may not be available, depending on the versions. Manitou reserves the right, at any time and without notice, to amend the specifications described and represented. The specifications provided do not bind the manufacturer. For more details, please contact your Manitou agent. This is not a contractually binding document. The presentation of the products is not contractually binding. List of specifications non-exhaustive. The logos as well as the visual identity of the company are owned by Manitou and cannot be used without authorisation. All rights reserved. The photos and diagrams contained in this brochure are only provided for consultation and information purposes.

MANITOU BF SA - Limited company with board of directors - Share capital: 39,668,399 euros - 857 802 508 RCS Nantes