

Technical sheet :

# **MRT-X 3255 PRIVILEGE PLUS**

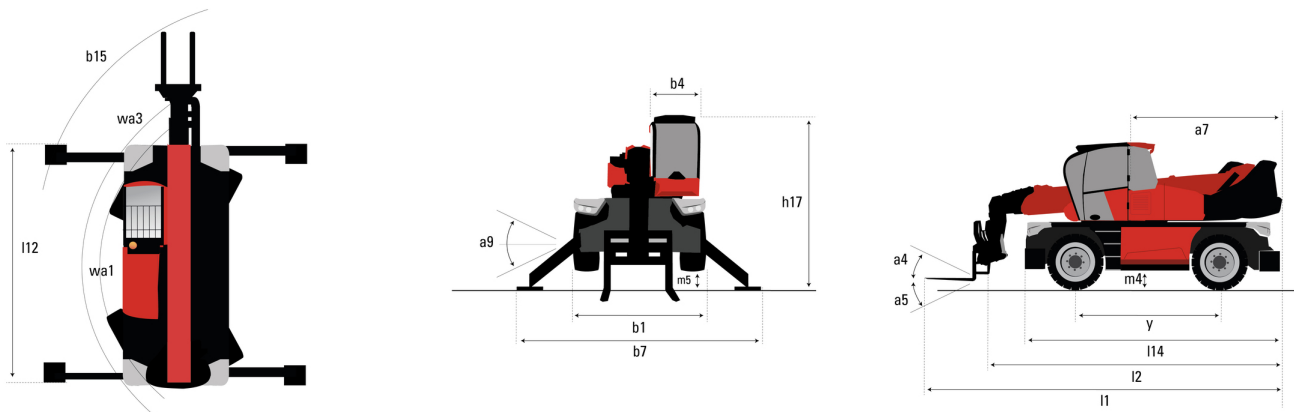
---



 **MANITOU**  
HANDLING YOUR WORLD

Capacities		Metric		Imperial	
Max. capacity			5500 kg		12125 lb
Max. lifting height			31.60 m		103 ft 8 in
Maximum outreach			27.20 m		89 ft 3 in
Weight and dimensions					
Overall length (with forks)	l1		9.70 m		31 ft 10 in
Length to face of forks	l2		8.50 m		27 ft 11 in
Overall width	b1		2.50 m		8 ft 2 in
Overall height	h17		3.20 m		10 ft 6 in
Overall cab width	b4		0.99 m		3 ft 3 in
Outer frame turning radius	Wa3		5.56 m		18 ft 3 in
Ground clearance	m4		0.42 m		1 ft 5 in
Wheelbase	y		3.75 m		12 ft 4 in
Frame leveling longitudinal +/-			3 °		3 °
Tilt-up angle	a4		12 °		12 °
Tilt-down angle	a5		105 °		105 °
Turret rotation			360 °		360 °
Overall weight			23896 kg		52682 lb
Forks length / width / section	l / e / s		1200 mm x 60 mm x 130 mm		47 in x 2 in x 5 in
Wheels					
Standard tires			17,5-R25		17,5-R25
Drive wheels (front / rear)			2 / 2		2 / 2
Stabilisers					
Stabilizers Type			Telescopic Duplex		Telescopic Duplex
Controls with stabs			Stabs Commands Individual or Simultaneous		Stabs Commands Individual or Simultaneous
Engine					
Engine brand			Mercedes		Mercedes
Engine norm			Stage IIIA		Stage IIIA
Engine model			OM_924_LA_E3A/1		OM_924_LA_E3A/1
I.C. Engine power rating / Power / Engine rotation			197 Hp / 145 kW @ 1600 rpm		197 Hp / 145 kW @ 1600 rpm
Max. torque / Engine rotation (min)			705 Nm @ 1200 rpm		520 ft/lbs @ 1200 rpm
Number of cylinders - Capacity of cylinders			4 - 4800 cm³		4 - 293 in³
Injection			engine Injection direct		engine Injection direct
Engine cooling system			Water		Water
Electric circuit					
Number of batteries / Battery voltage			2 x 12 V		2 x 12 V
12V Battery capacity			120 Ah		120 Ah
Transmission					
Transmission type			CVT		CVT
Max. travel speed			40 km/h		25 mph
Drawbar pull			10500 daN		10500 daN
Parking brake			Automatic Negative Hand-brake		Automatic Negative Hand-brake
Service brake			Hydraulic		Hydraulic
Hydraulics					
Hydraulic pump type			Variable pump		Variable pump
Hydraulic flow			210 l/min		55 US gpm
Hydraulic Pressure			350 bar		5076 PSI
Tank capacities					
Engine oil			21 l		6 US gal
Fuel tank			361 l		95 US gal
Noise and vibration					
Noise at driving position (LpA)			80 dB		80 dB
Noise to environment (LwA)			106 dB		106 dB
Vibration on hands/ams			< 2.50 m/s²		< 2.50 m/s²
Miscellaneous					
Steering wheels (front / rear)			2 / 2		2 / 2
Controls			2 Joysticks		2 Joysticks
Cab certification			Cabin ROPS - FOPS level 2		Cabin ROPS - FOPS level 2
Attachment recognition system (E-Reco)			Standard		Standard

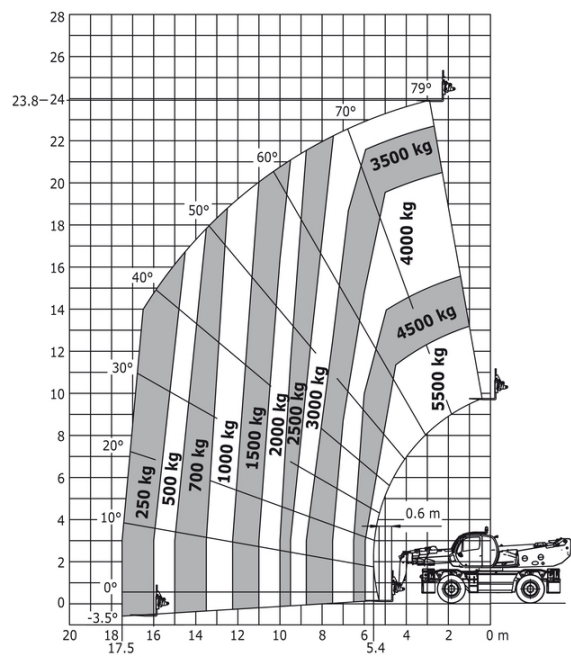
## MRT-X 3255 Privilege Plus - Dimensional drawing



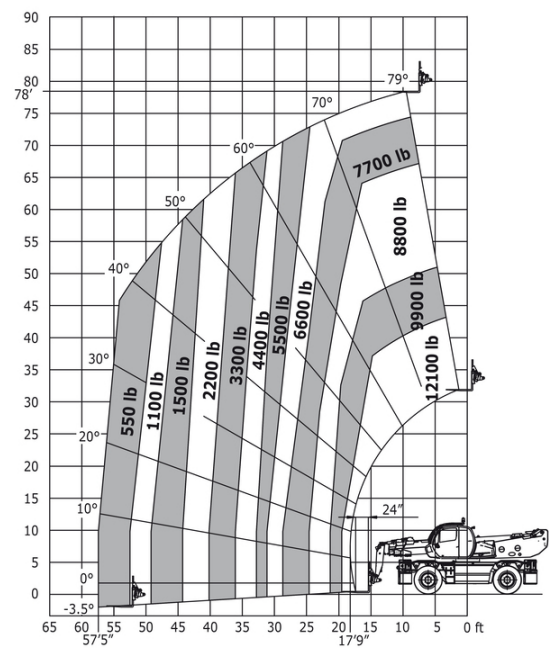
Other data		Metric	Imperial
Length of frame	l14	6.57 m	21 ft 7 in
Wheelbase	y	3.75 m	12 ft 4 in
Ground clearance	m4	0.42 m	1 ft 5 in
Counterweight offset (turret at 90°)	a7	3.80 m	12 ft 6 in
Tilt-up angle	a4	12 °	12 °
Tilt-down angle	a5	105 °	105 °
Overall length at stabilisers	l12	6.49 m	21 ft 4 in
Outer frame turning radius	Wa3	5.56 m	18 ft 3 in
Outer turning radius (with forks)	b15	7 m	23 ft
Overall width with stabilisers extended	b7	7.10 m	23 ft 4 in
Overall height	h17	3.20 m	10 ft 6 in
Frame leveling corrector	a9	+/- 8 °	+/- 8 °
Ground clearance under front tires on stabilizers	m5	0.35 m	1 ft 2 in

MRT-X 3255 Privilege Plus - Load chart

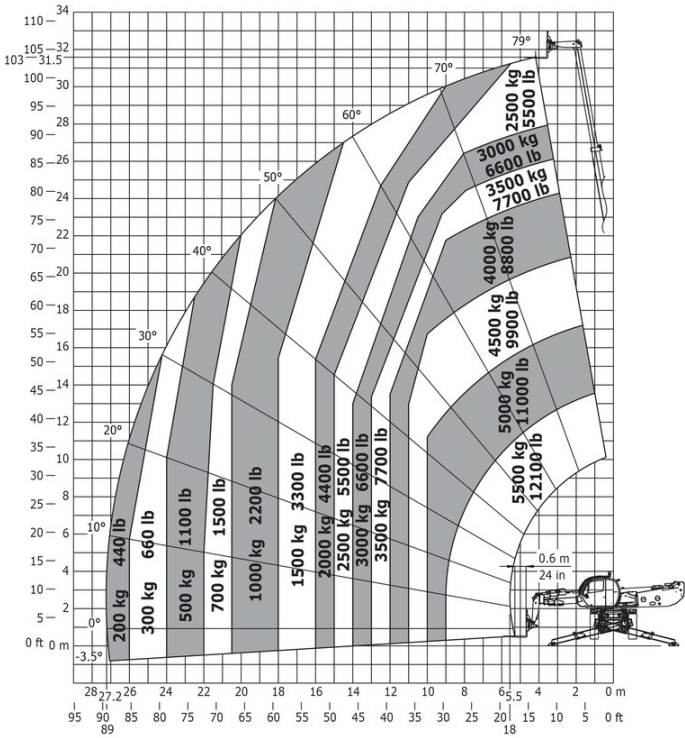
Machine on tires with forks Metric



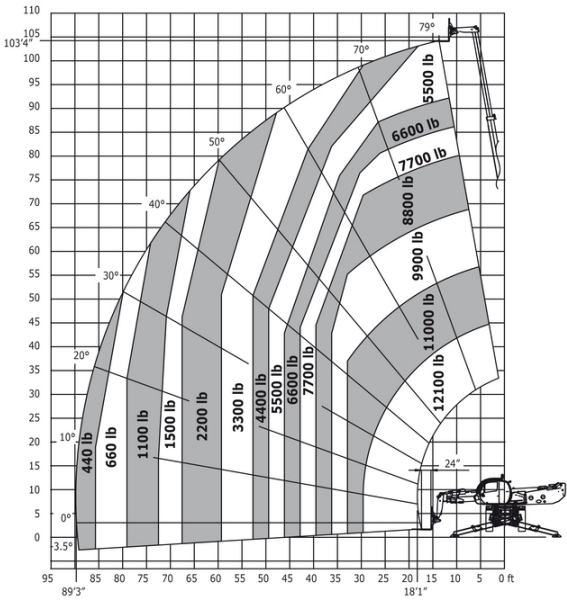
Machine on tires with forks Imperial



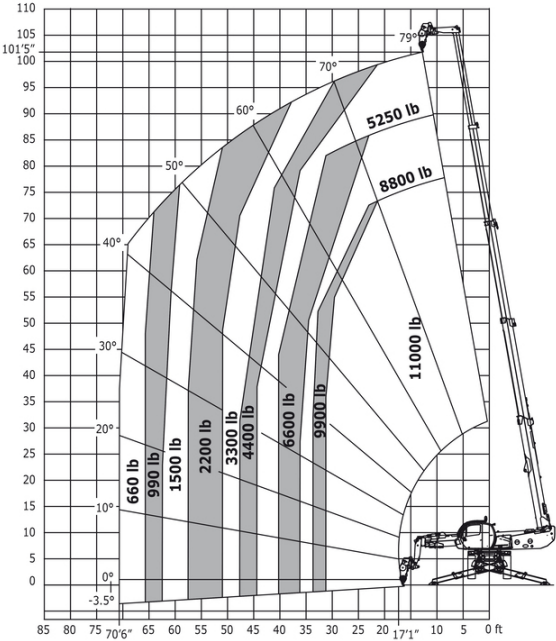
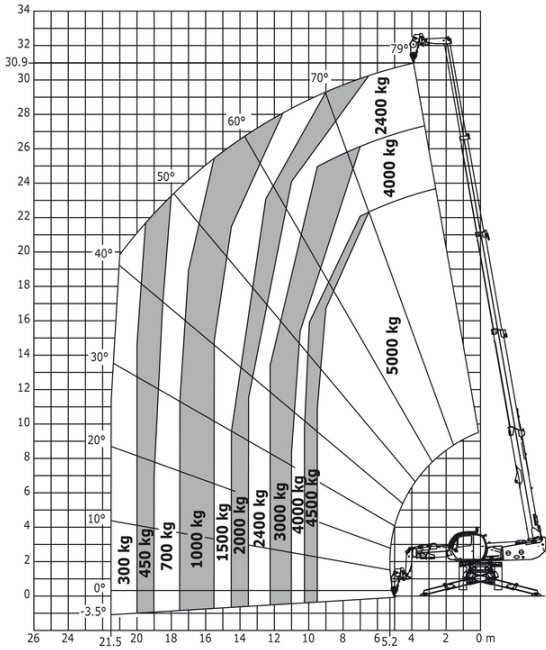
Machine on lowered stabilisers with forks Metric



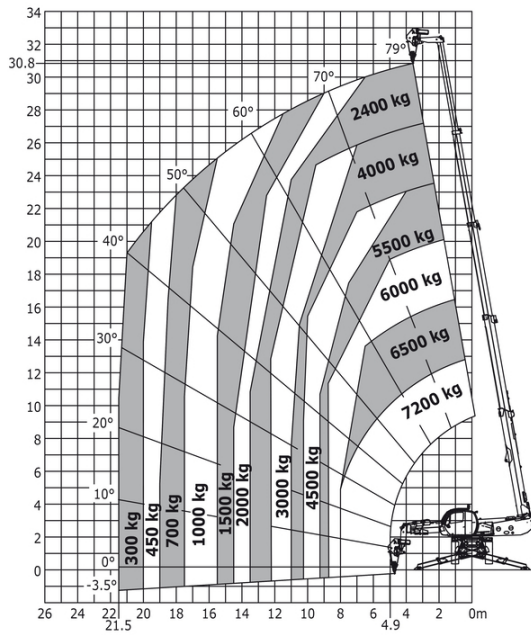
Machine on lowered stabilisers with forks Imperial



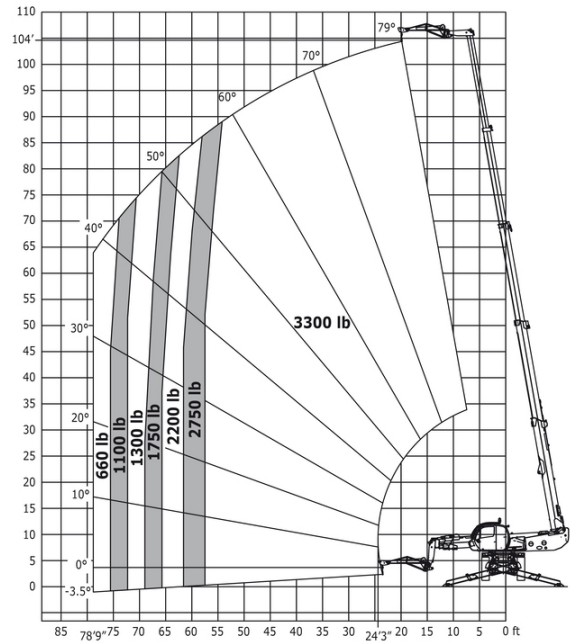
Machine on lowered stabilisers with winch 5000 kg Metric Machine on lowered stabilisers with winch 5000 kg Imperial



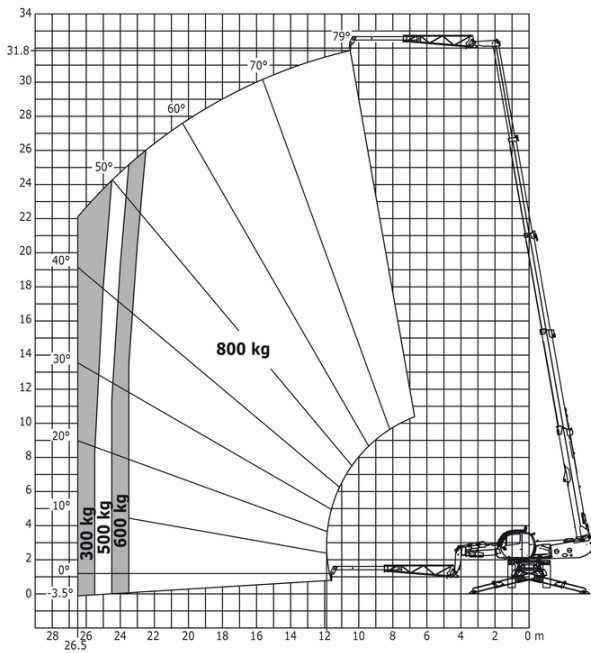
Machine on lowered stabilisers with winch 7000 kg Metric



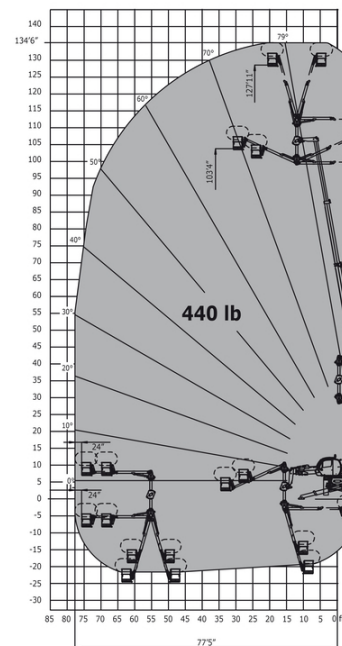
Machine on lowered stabilisers with 1500 kg jib Imperial



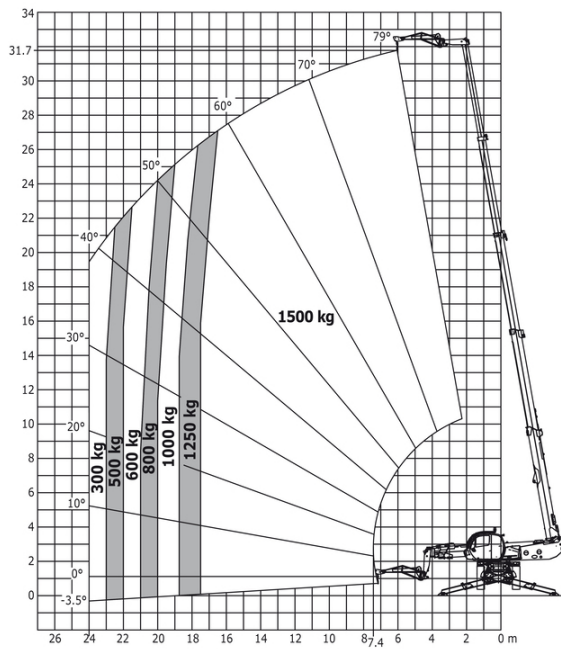
Machine on lowered stabilisers with 800 kg jib Metric



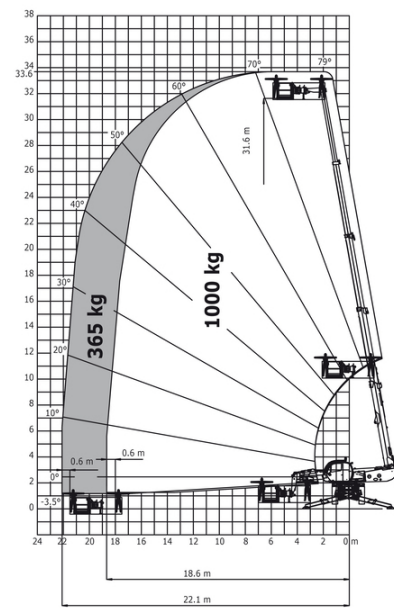
Machine on lowered stabilisers with 3D positive / negative Imperial



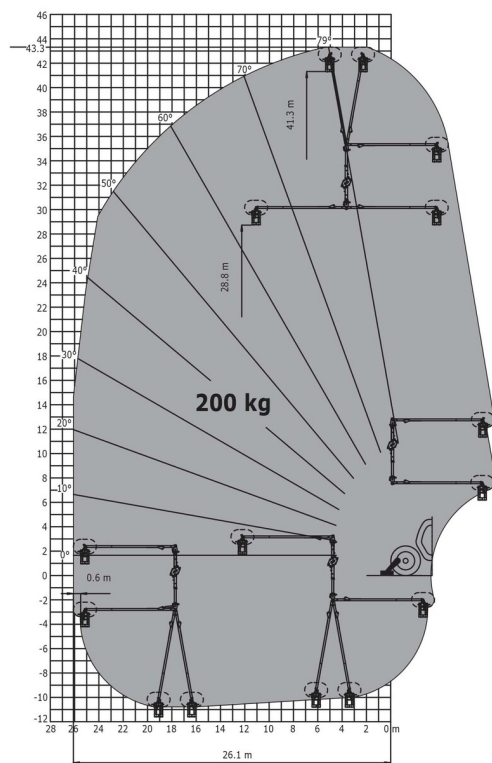
Machine on lowered stabilisers with 1500 kg jib Metric



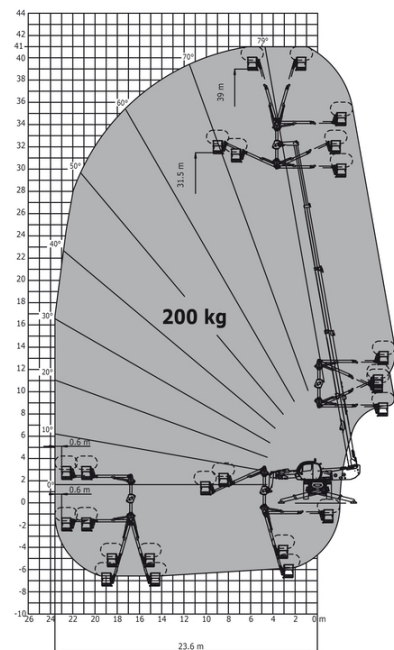
Machine on lowered stabilisers with 365 kg platform Metric



Machine on lowered stabilisers with 3D positive Metric



Machine on lowered stabilisers with 3D positive / negative Metric





**Head Office**

B.P. 249 - 430 rue de l'Aubinière

44150 Ancenis Cedex - France

Tel: +33 (0)2 40 09 10 11 - Fax: +33 (0)2 40 09 10 97

[www.manitou.com](http://www.manitou.com)



This publication provides a description of the configuration versions and options for Manitou products, which may differ for equipment. The equipment presented in this brochure may be part of a series, as an option, or it may not be available, depending on the versions. Manitou reserves the right, at any time and without notice, to amend the specifications described and represented. The specifications provided do not bind the manufacturer. For more details, please contact your Manitou agent. This is not a contractually binding document. The presentation of the products is not contractually binding. List of specifications non-exhaustive. The logos as well as the visual identity of the company are owned by Manitou and cannot be used without authorisation. All rights reserved. The photos and diagrams contained in this brochure are only provided for consultation and information purposes.

MANITOU BF SA - Limited company with board of directors - Share capital: 39,668,399 euros - 857 802 508 RCS Nantes