

Technical sheet :

MLT 625-75 H



 **MANITOU**
HANDLING YOUR WORLD

Capacities		Metric	Imperial
Max. capacity	Q	2500 kg	5512 lb
Max. lifting height	h3	5.90 m	19 ft 4 in
Max. outreach		3.30 m	10 ft 10 in
Reach at max. height		0.50 m	1 ft 8 in
Breakout force with bucket		4205 daN	4205 daN
Weight and dimensions			
Unladen weight (with forks)		4922 kg	10851 lb
Ground clearance	m4	0.38 m	1 ft 3 in
Wheelbase	y	2.30 m	7 ft 7 in
Overall length to carriage (with hitch)	l11	3.90 m	12 ft 10 in
Overall length to carriage (without hitch)	l3	3.90 m	12 ft 10 in
Front overhang		0.99 m	3 ft 3 in
Overall width	b1	1.81 m	5 ft 11 in
Overall cab width	b4	0.80 m	2 ft 7 in
Overall height	h17	2 m	6 ft 7 in
Tilt-down angle	a5	117 °	117 °
Tilt-up angle	a4	12 °	12 °
External turning radius (over tyres)	Wa1	3.31 m	10 ft 10 in
Standard tires		Alliance - A580 - 300/75 R18 142A8	Alliance - A580 - 300/75 R18 142A8
Drive wheels (front / rear)		2 / 2	2 / 2
Steering wheels (front / rear)		2 / 2	2 / 2
Performances			
Lifting		7.30 s	7.30 s
Lowering		4.95 s	4.95 s
Extension		5.20 s	5.20 s
Retraction		3.70 s	3.70 s
Crowd		3.20 s	3.20 s
Dump		3.20 s	3.20 s
Engine			
Engine brand		Kubota	Kubota
Engine nom		Stage V	Stage V
Engine model		V3307-CR-TE5B	V3307-CR-TE5B
Number of cylinders - Capacity of cylinders		4 - 3331 cm ³	4 - 203 in ³
I.C. Engine power rating / Power		75 Hp / 55.40 kW	75 Hp / 55.40 kW
Max. torque / Engine rotation		265 Nm @1400 rpm	195 ft/lbs @1400 rpm
Drawbar pull (Laden)		3240 daN	3240 daN
Reversible fan		Standard	Standard
Engine cooling system		2 radiators water + hydraulic oil	2 radiators water + hydraulic oil
Transmission			
Transmission type		Hydrostatic	Hydrostatic
Number of gears (forward / reverse)		2 / 2	2 / 2
Max. travel speed (may vary according to applicable regulations)		25 km/h	16 mph
Differential lock		Limited slip differential on front axle	Limited slip differential on front axle
Parking brake		Automatic negative parking brake	Automatic negative parking brake
Service brake		Oil-Immersed multi-discs braking on front axles	Oil-Immersed multi-discs braking on front axles
Hydraulics			
Hydraulic pump type		Gear pump	Gear pump
Hydraulic flow - Pressure		86 l/min - 235 bar	23 US gpm - 3408 PSI
Tank capacities			
Fuel tank		63 l	17 US gal
Noise and vibration			
Noise at driving position (LpA) tested following NF EN 12053 nom		76 dB	76 dB
Noise to environment (LwA)		104 dB	104 dB
Vibration on hands/arms		< 2.50 m/s ²	< 2.50 m/s ²
Miscellaneous			
Safety cab homologation		ROPS - FOPS cab (level 1)	ROPS - FOPS cab (level 1)
Controls		JSM	JSM

Optional tires tab

Optional tires tab

ALLIANCE - A328 - 400/55 R17.5 149A8

BKT - AS504 - 15/55-17 122A8

MICHELIN - XMCL - 280/80 R18 132A8

MICHELIN - XMCL - 280/80 R20 133A8

Overall height

6 ft 7 in (2.01 m)

6 ft 6 in (1.99 m)

6 ft 7 in (2.01 m)

6 ft 8 in (2.03 m)

Overall width

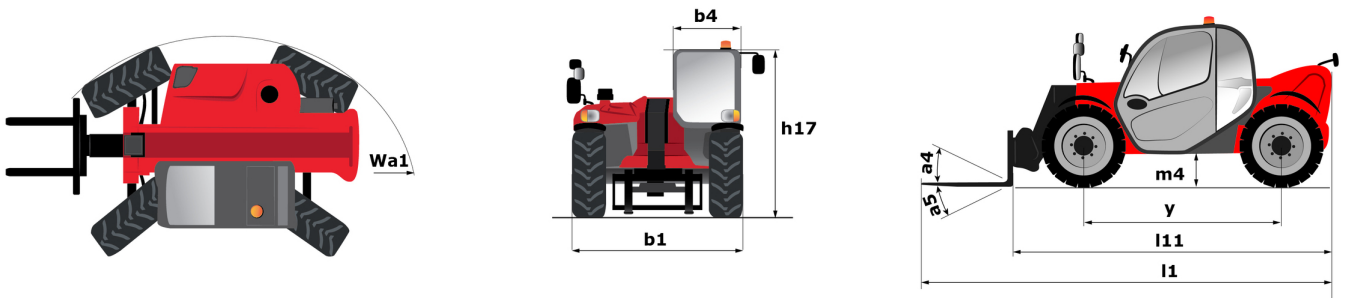
6 ft 4 in (1.92 m)

6 ft 4 in (1.93 m)

6 ft (1.82 m)

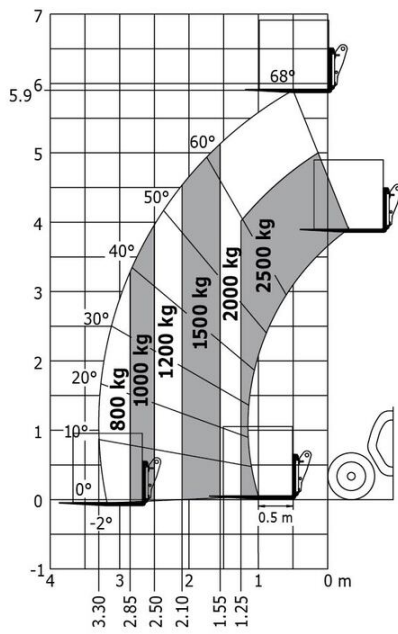
5 ft 10 in (1.79 m)

MLT 625-75 H - Dimensional drawing

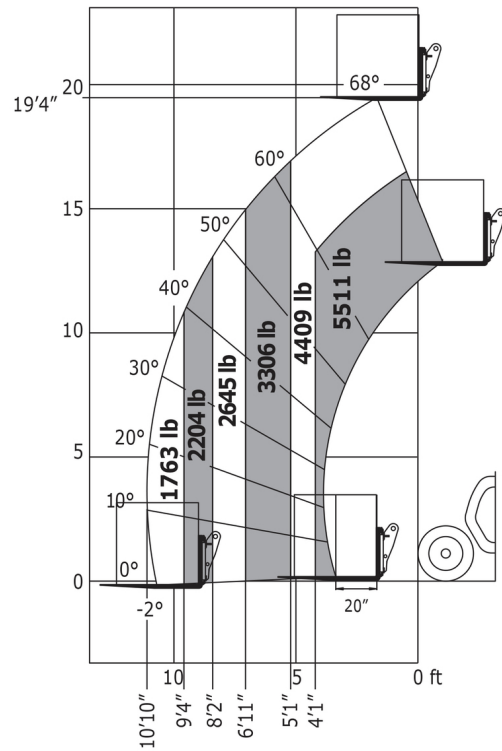


MLT 625-75 H - Load chart

Machine on tires with forks Metric



Machine on tires with forks Imperial





Head Office

B.P. 249 - 430 rue de l'Aubinière

44150 Ancenis Cedex - France

Tel: +33 (0)2 40 09 10 11 - Fax: +33 (0)2 40 09 10 97

www.manitou.com



This publication provides a description of the configuration versions and options for Manitou products, which may differ for equipment. The equipment presented in this brochure may be part of a series, as an option, or it may not be available, depending on the versions. Manitou reserves the right, at any time and without notice, to amend the specifications described and represented. The specifications provided do not bind the manufacturer. For more details, please contact your Manitou agent. This is not a contractually binding document. The presentation of the products is not contractually binding. List of specifications non-exhaustive. The logos as well as the visual identity of the company are owned by Manitou and cannot be used without authorisation. All rights reserved. The photos and diagrams contained in this brochure are only provided for consultation and information purposes.

MANITOU BF SA - Limited company with board of directors - Share capital: 39,668,399 euros - 857 802 508 RCS Nantes