

Technical sheet :

# **MT 1033 EASY**

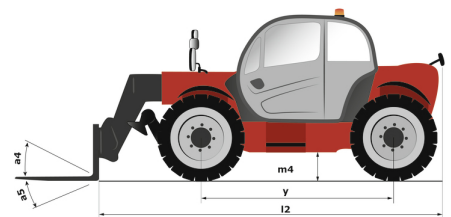
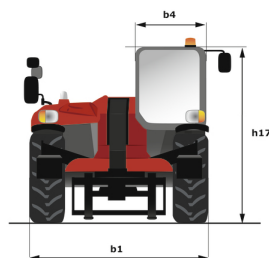
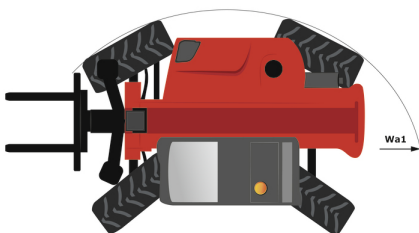
---



 **MANITOU**  
HANDLING YOUR WORLD

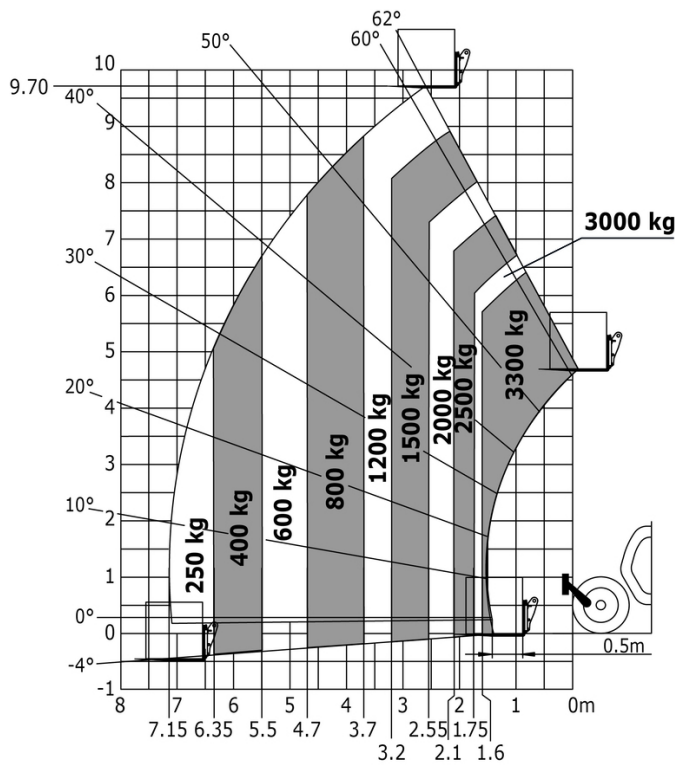
| Capacities                                  |           | Metric   | Imperial   |
|---|-----------|--|--|
| Max. capacity                               |           | 3300 kg  | 7275 lb  |
| Max. lifting height                         |           | 9.98 m   | 32 ft 9 in   |
| Max. outreach                               |           | 7.15 m   | 23 ft 5 in   |
| Breakout force with bucket                  |           | 5330 daN   | 5330 daN   |
| Weight and dimensions                       |           |  |  |
| Overall length to carriage                  | l11       | 4.93 m   | 16 ft 2 in   |
| Overall width                               | b1        | 2.33 m   | 7 ft 8 in  |
| Overall height                              | h17       | 2.30 m   | 7 ft 7 in  |
| Wheelbase                                   | y         | 2.69 m   | 8 ft 10 in   |
| Ground clearance                            | m4        | 0.45 m   | 1 ft 6 in  |
| Overall cab width                           | b4        | 0.89 m   | 2 ft 11 in   |
| Tilt-up angle                               | a4        | 12 °   | 12 °   |
| Tilt-down angle                             | a5        | 114 °  | 114 °  |
| External turning radius (over tyres)        | Wa1       | 3.80 m   | 12 ft 6 in   |
| Unladen weight (with forks)                 |           | 7790 kg  | 17174 lb   |
| Overall weight                              |           | 7790 kg  | 17174 lb   |
| Tires type                                  |           | Pneumatic  | Pneumatic  |
| Standard tires                              |           | Alliance 400/80 - 24 - 162A8                           | Alliance 400/80 - 24 - 162A8                           |
| Forks length / width / section              | l / e / s | 1200 mm x 125 mm / 45 mm                               | 47 in x 5 in / 2 in                                    |
| Performances                                |           |  |  |
| Lifting                                     |           | 6.70 s   | 6.70 s   |
| Lowering                                    |           | 5.40 s   | 5.40 s   |
| Extension                                   |           | 13.60 s  | 13.60 s  |
| Retraction                                  |           | 8.70 s   | 8.70 s   |
| Crowd                                       |           | 2.70 s   | 2.70 s   |
| Dump  |           | 2.30 s   | 2.30 s   |
| Engine                                      |           |  |  |
| Engine brand                                |           | Deutz  | Deutz  |
| Engine norm                                 |           | Stage V / Tier 4 final                                 | Stage V / Tier 4 final                                 |
| Engine model                                |           | TD 3.6 L   | TD 3.6 L   |
| Number of cylinders / Capacity of cylinders |           | 4 - 3621 cm³   | 4 - 221 in³  |
| I.C. Engine power rating - Power            |           | 75 Hp / 55.40 kW                                       | 75 Hp / 55.40 kW                                       |
| Max. torque / Engine rotation               |           | 340 Nm @ 1600 rpm                                      | 251 ft/lbs @ 1600 rpm                                  |
| Drawbar pull (Laden)                        |           | 8580 daN   | 8580 daN   |
| Transmission                                |           |  |  |
| Transmission type                           |           | Torque converter                                       | Torque converter                                       |
| Number of gears (forward / reverse)         |           | 4 / 4  | 4 / 4  |
| Max. travel speed                           |           | 24.90 km/h   | 15 mph   |
| Parking brake                               |           | Manual   | Manual   |
| Service brake                               |           | Oil-immersed multi-discs braking on front & rear axles | Oil-immersed multi-discs braking on front & rear axles |
| Hydraulics                                  |           |  |  |
| Hydraulic pump type                         |           | Gear pump  | Gear pump  |
| Hydraulic flow / Pressure                   |           | 92.70 l/min-250 bar                                    | 24 US gpm-3626 PSI                                     |
| Tank capacities                             |           |  |  |
| Engine oil                                  |           | 10 l   | 3 US gal   |
| Hydraulic oil                               |           | 128 l  | 34 US gal  |
| Fuel tank                                   |           | 120 l  | 32 US gal  |
| Noise and vibration                         |           |  |  |
| Noise at driving position (LpA)             |           | 79 dB  | 79 dB  |
| Noise to environment (LwA)                  |           | 104 dB   | 104 dB   |
| Vibration on hands/arms                     |           | < 2.50 m/s²  | < 2.50 m/s²  |
| Miscellaneous                               |           |  |  |
| Steering wheels (front / rear)              |           | 2 / 2  | 2 / 2  |
| Drive wheels (front / rear)                 |           | 2 / 2  | 2 / 2  |
| Safety / Safety cab homologation            |           | Standard EN 15000 / ROPS - FOPS level 2 cab            | Standard EN 15000 / ROPS - FOPS level 2 cab            |
| Controls                                    |           | JSM  | JSM  |

## MT 1033 easy - Dimensional drawing

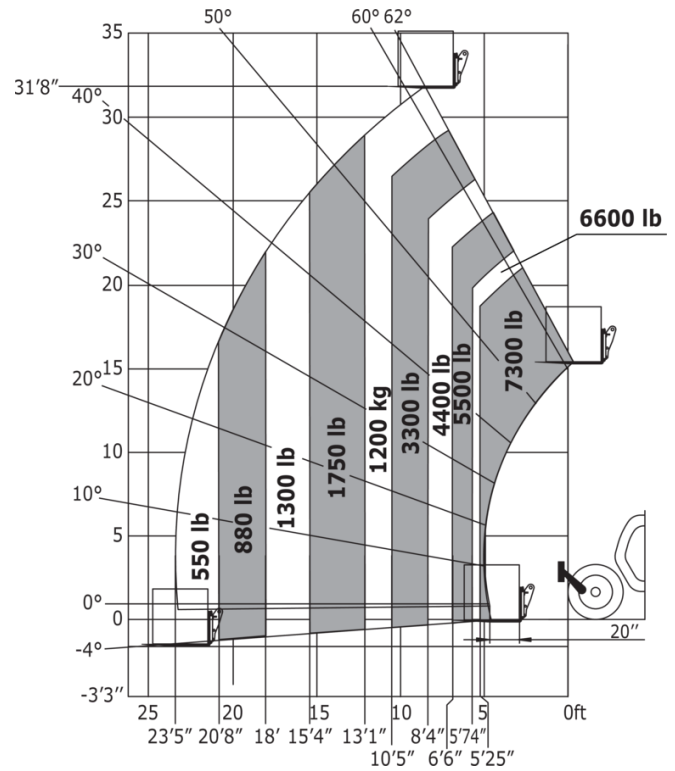


## MT 1033 easy - Load chart

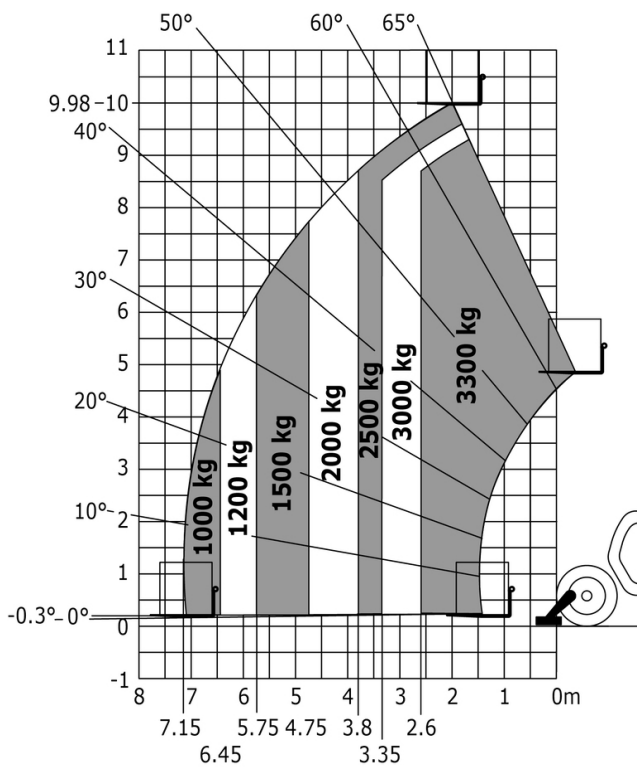
Machine on tyres with forks Metric



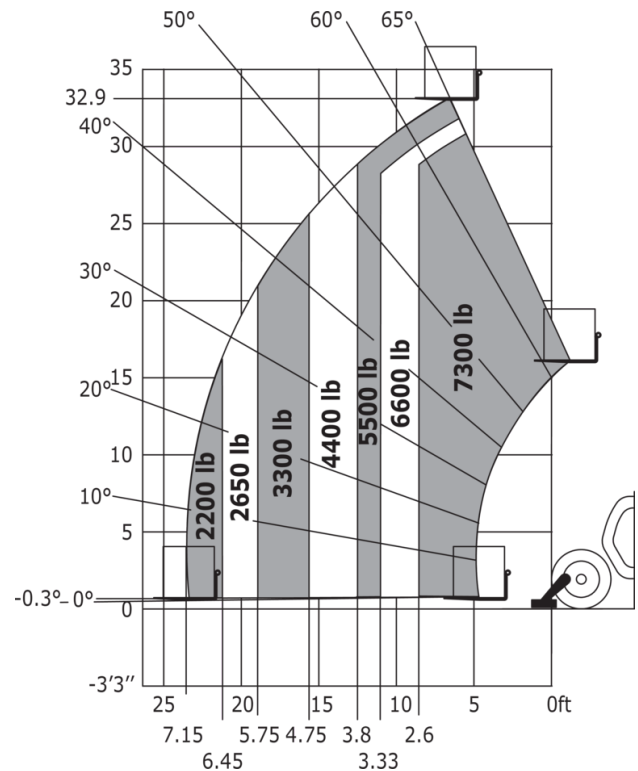
Machine on tyres with forks Imperial



Machine on lowered stabilisers with forks Metric



Machine on lowered stabilisers with forks Imperial





**Head Office**

B.P. 249 - 430 rue de l'Aubinière

44150 Ancenis Cedex - France

Tel: +33 (0)2 40 09 10 11 - Fax: +33 (0)2 40 09 10 97

[www.manitou.com](http://www.manitou.com)



This publication provides a description of the configuration versions and options for Manitou products, which may differ for equipment. The equipment presented in this brochure may be part of a series, as an option, or it may not be available, depending on the versions. Manitou reserves the right, at any time and without notice, to amend the specifications described and represented. The specifications provided do not bind the manufacturer. For more details, please contact your Manitou agent. This is not a contractually binding document. The presentation of the products is not contractually binding. List of specifications non-exhaustive. The logos as well as the visual identity of the company are owned by Manitou and cannot be used without authorisation. All rights reserved. The photos and diagrams contained in this brochure are only provided for consultation and information purposes.

MANITOU BF SA - Limited company with board of directors - Share capital: 39,668,399 euros - 857 802 508 RCS Nantes