

Technical sheet :

200 ATJ-X



 **MANITOU**
HANDLING YOUR WORLD

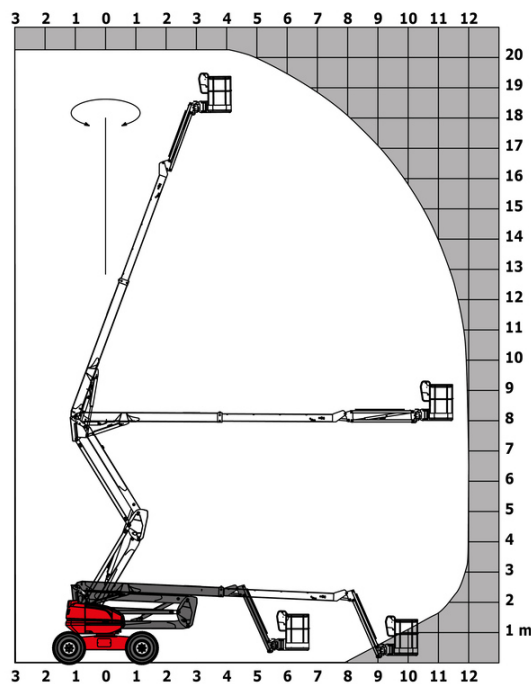
| Capacities | | Metric | Imperial |
|---|---------|--|--|
| Working height | h21 | 20.28 m | 66 ft 6 in |
| Floor height (access) | h20 | 0.51 m | 1 ft 8 in |
| Platform height | h7 | 18.28 m | 60 ft |
| Max. outreach | | 12 m | 39 ft 4 in |
| Overhang | | 8 m | 26 ft 3 in |
| Pendular arm rotation (top / bottom) | | +69 ° / -66 ° | +69 ° / -66 ° |
| Platform capacity | Q | 230 kg | 507 lb |
| Turret rotation | | 355 ° | 355 ° |
| Platform rotation (right / left) | | 90 ° / 90 ° | 90 ° / 90 ° |
| Number of people (indoor / outdoor) | | 2 / 2 | 2 / 2 |
| Weight and dimensions | | | |
| Platform weight* | | 10050 kg | 22156 lb |
| Platform dimensions (length x width) | lp / ep | 2.10 m x 0.80 m | 6 ft 11 in x 2 ft 7 in |
| Overall length | l1 | 8.42 m | 27 ft 7 in |
| Overall width | b1 | 2.40 m | 7 ft 10 in |
| Overall height | h17 | 2.71 m | 8 ft 11 in |
| Overall length (stowed) | l9 | 6.21 m | 20 ft 4 in |
| Overall height (stowed) ** | h18 | 2.85 m | 9 ft 4 in |
| Counterweight offset (turret at 90°) | a7 | 0.11 m | 4 in |
| Counterweight Oversize / Reach | | 0.11 m | 4 in |
| External turning radius | Wa3 | 4.17 m | 13 ft 8 in |
| Ground clearance at centre of wheelbase | m2 | 0.44 m | 1 ft 5 in |
| Wheelbase | y | 2.40 m | 7 ft 10 in |
| Performances | | | |
| Drive speed - stowed | | 4.70 km/h | 3 mph |
| Drive speed - raised | | 0.80 km/h | 0.50 mph |
| Gradeability | | 40 % | 40 % |
| Permissible leveling | | 5 ° | 5 ° |
| Wheels | | | |
| Tires type | | Solid Tires Cured-On | Solid Tires Cured-On |
| Standard tires | | 1025 x 365 mm | 1025 x 365 mm |
| Drive wheels (front / rear) | | 2 / 2 | 2 / 2 |
| Steering wheels (front / rear) | | 2 / 2 | 2 / 2 |
| Braking wheels (front / rear) | | 0 / 2 | 0 / 2 |
| Engine/Battery | | | |
| Engine brand / model | | Kubota - V2403-M | Kubota - V2403-M |
| Engine norm | | Stage IIIA | Stage IIIA |
| I.C. Engine power rating / Power | | 46 Hp / 34.10 kW | 46 Hp / 34.10 kW |
| Miscellaneous | | | |
| Ground Pressure | | 20.65 dan/cm2 | 300 PSI |
| Hydraulic Pressure | | 335 bar | 4859 PSI |
| Hydraulic tank capacity | | 80 l | 21 US gal |
| Fuel tank | | 78 l | 21 US gal |
| Vibration on hands/arms | | < 0.50 m/s² | < 0.50 m/s² |
| Daily consumption ** | | 7.96 l | 2 US gal |
| Standards compliance | | | |
| This machine is in compliance with: | | European directives: 2006/42/EC- Machinery (revised EN280:2013) - 2004/108/EC (EMC) - 2006/95/EC (Low voltage) | European directives: 2006/42/EC- Machinery (revised EN280:2013) - 2004/108/EC (EMC) - 2006/95/EC (Low voltage) |

*Varies according to options and standards of the country to which the machine is delivered

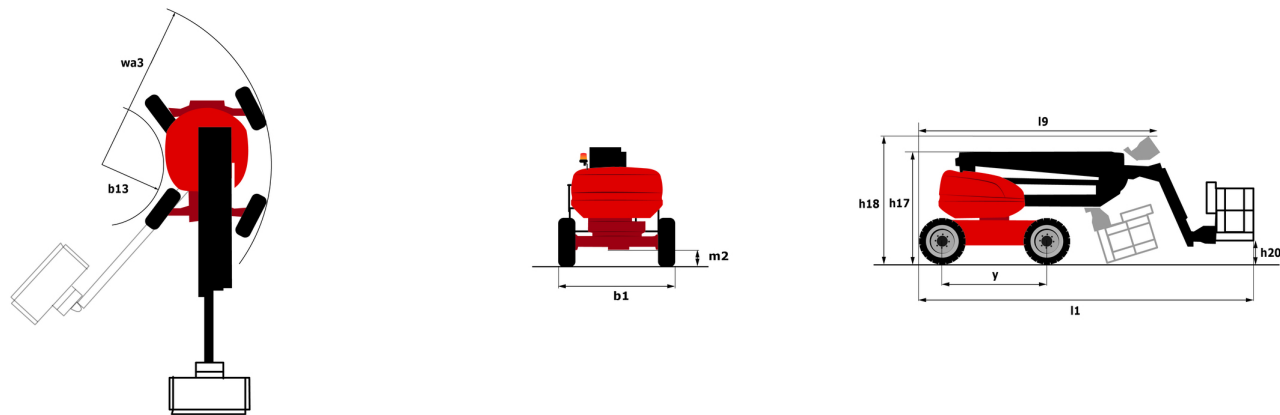
** According to "REDUCE cycle"

200 ATJ-X - Load chart

Load Chart metric



200 ATJ-X - Dimensional drawing



Equipment

Standard

230V Predisposition
4 simultaneous movements
4 wheel drive
4 wheel steer with crab mode
Audible alarm and illuminated indicator lamp (leveling, overload, lowering)
Backup electrical pump
CAN bus technology
Dead man pedal
Differential locking on rear axle
Fuel gauge with low level indicator
Galvanized basket 2,100 mm
Hour meter
Management via engine speed bearing
Oscillating front axle
Proportional controls
Rear axle with limited slip differential

Optional

110 or 230V plug with differential circuit breaker
Battery cut-off
Biodegradable oil
Catalytic cleaner
Coded anti-start
Cold weather protection oil
Continuous turret rotation
Highly capacity battery
Key lock on fuel tank
Key lock on turret cover
On-board generator (3,5 or 5 kW)
SMS : Safe Man System
Safety harness
Screen protection on the lower box control
Spark arrester
Water heater
Working light



Head Office

B.P. 249 - 430 rue de l'Aubinière

44150 Ancenis Cedex - France

Tel: +33 (0)2 40 09 10 11 - Fax: +33 (0)2 40 09 10 97

www.manitou.com



This publication provides a description of the configuration versions and options for Manitou products, which may differ for equipment. The equipment presented in this brochure may be part of a series, as an option, or it may not be available, depending on the versions. Manitou reserves the right, at any time and without notice, to amend the specifications described and represented. The specifications provided do not bind the manufacturer. For more details, please contact your Manitou agent. This is not a contractually binding document. The presentation of the products is not contractually binding. List of specifications non-exhaustive. The logos as well as the visual identity of the company are owned by Manitou and cannot be used without authorisation. All rights reserved. The photos and diagrams contained in this brochure are only provided for consultation and information purposes.

MANITOU BF SA - Limited company with board of directors - Share capital: 39,668,399 euros - 857 802 508 RCS Nantes