

Technical sheet :

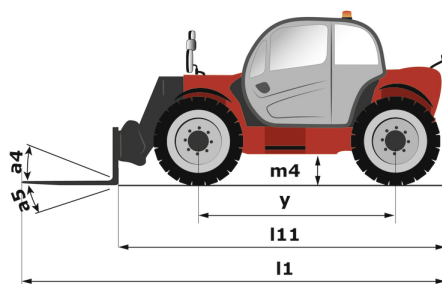
MT-X 733

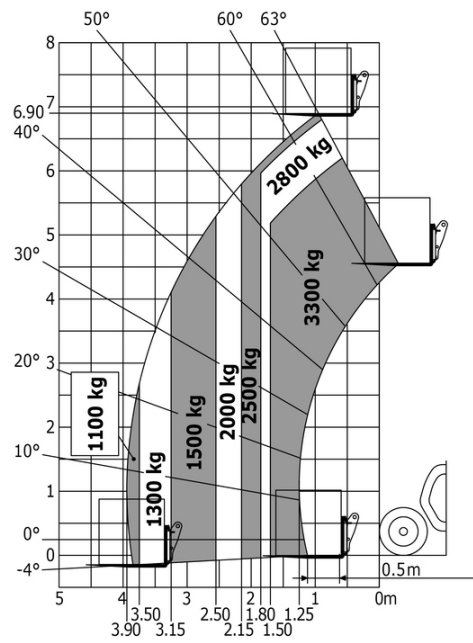


 **MANITOU**
HANDLING YOUR WORLD

Capacities		Metric	Imperial
Max. capacity		3300 kg	7275 lb
Max. lifting height		6.90 m	22 ft 8 in
Max. outreach		3.90 m	12 ft 10 in
Breakout force with bucket		7400 daN	7400 daN
Weight and dimensions			
Overall length to carriage	l11	4.74 m	15 ft 7 in
Length to face of forks	l2	4.76 m	15 ft 7 in
Overall width	b1	2.26 m	7 ft 5 in
Overall height	h17	2.30 m	7 ft 7 in
Wheelbase	y	2.81 m	9 ft 3 in
Ground clearance	m4	0.45 m	1 ft 6 in
Overall cab width	b4	0.89 m	2 ft 11 in
Tilt-up angle	a4	12 °	12 °
Tilt-down angle	a5	114 °	114 °
External turning radius (over tyres)	Wa1	3.80 m	12 ft 6 in
Unladen weight (with forks)		7090 kg	15631 lb
Overall weight		6620 kg	14595 lb
Tires type		Pneumatic	Pneumatic
Standard tires		Alliance 400/80 - 24 - 162A8	Alliance 400/80 - 24 - 162A8
Forks length / width / section	l / e / s	1200 mm x 125 mm / 45 mm	47 in x 5 in / 2 in
Performances			
Lifting		7.20 s	7.20 s
Lowering		5.50 s	5.50 s
Extension		6.50 s	6.50 s
Retraction		5.40 s	5.40 s
Crowd		2.90 s	2.90 s
Dump		2.80 s	2.80 s
Engine			
Engine brand		Perkins	Perkins
Engine norm		Stage IIIA	Stage IIIA
Max. fuel sulphur content		5000 ppm	5000 ppm
Engine model		1104D-44 T	1104D-44 T
Number of cylinders / Capacity of cylinders		4 - 4400 cm³	4 - 269 in³
I.C. Engine power rating - Power		95 Hp / 70 kW	95 Hp / 70 kW
Max. torque / Engine rotation		392 Nm @ 1400 rpm	289 ft/lbs @ 1400 rpm
Drawbar pull (Laden)		9000 daN	9000 daN
Transmission			
Transmission type		Torque converter	Torque converter
Number of gears (forward / reverse)		4 / 4	4 / 4
Max. travel speed		27 km/h	17 mph
Parking brake		Manual	Manual
Service brake		Oil-immersed multi-discs braking on front & rear axles	Oil-immersed multi-discs braking on front & rear axles
Hydraulics			
Hydraulic pump type		Gear pump	Gear pump
Hydraulic flow / Pressure		104 l/min-250 bar	27 US gpm-3626 PSI
Tank capacities			
Engine oil		10 l	3 US gal
Hydraulic oil		128 l	34 US gal
Fuel tank		120 l	32 US gal
Noise and vibration			
Noise at driving position (LpA)		78 dB	78 dB
Noise to environment (LwA)		104 dB	104 dB
Vibration on hands/arms		< 2.50 m/s²	< 2.50 m/s²
Miscellaneous			
Steering wheels (front / rear)		2 / 2	2 / 2
Drive wheels (front / rear)		2 / 2	2 / 2
Safety / Safety cab homologation		Standard EN 15000 / ROPS - FOPS level 2 cab	Standard EN 15000 / ROPS - FOPS level 2 cab
Controls		JSM	JSM

MT-X 733 - Dimensional drawing







Head Office

B.P. 249 - 430 rue de l'Aubinière

44150 Ancenis Cedex - France

Tel: +33 (0)2 40 09 10 11 - Fax: +33 (0)2 40 09 10 97

www.manitou.com



This publication provides a description of the configuration versions and options for Manitou products, which may differ for equipment. The equipment presented in this brochure may be part of a series, as an option, or it may not be available, depending on the versions. Manitou reserves the right, at any time and without notice, to amend the specifications described and represented. The specifications provided do not bind the manufacturer. For more details, please contact your Manitou agent. This is not a contractually binding document. The presentation of the products is not contractually binding. List of specifications non-exhaustive. The logos as well as the visual identity of the company are owned by Manitou and cannot be used without authorisation. All rights reserved. The photos and diagrams contained in this brochure are only provided for consultation and information purposes.

MANITOU BF SA - Limited company with board of directors - Share capital: 39,668,399 euros - 857 802 508 RCS Nantes