

Technical sheet :

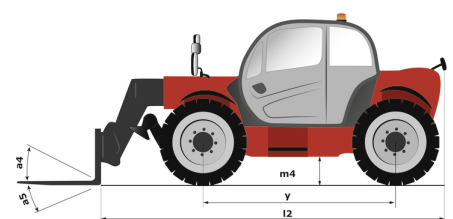
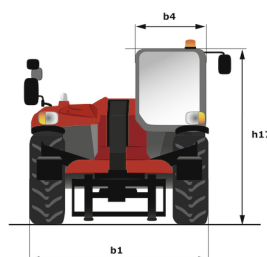
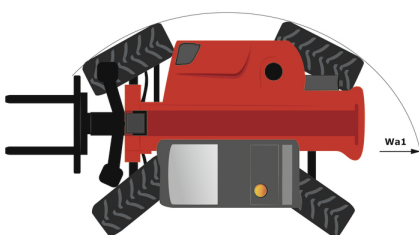
MT 1335 EASY ST5

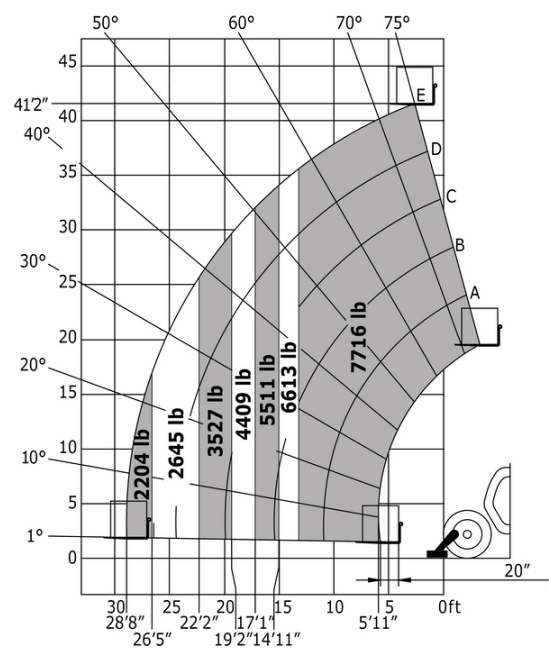


 **MANITOU**
HANDLING YOUR WORLD

| Capacities | | Metric | Imperial |
|---|-----------|--|--|
| Max. capacity | | 3500 kg | 7716 lb |
| Max. lifting height | | 12.55 m | 41 ft 2 in |
| Max. outreach | | 8.75 m | 28 ft 8 in |
| Breakout force with bucket | | 6500 daN | 6500 daN |
| Weight and dimensions | | | |
| Overall length to carriage | l11 | 5.86 m | 19 ft 3 in |
| Length to face of forks | l2 | 5.86 m | 19 ft 3 in |
| Overall width | b1 | 2.27 m | 7 ft 5 in |
| Overall height | h17 | 2.42 m | 7 ft 11 in |
| Wheelbase | y | 2.88 m | 9 ft 5 in |
| Ground clearance | m4 | 0.42 m | 1 ft 5 in |
| Overall cab width | b4 | 0.88 m | 2 ft 11 in |
| Tilt-up angle | a4 | 12 ° | 12 ° |
| Tilt-down angle | a5 | 114 ° | 114 ° |
| External turning radius (over tyres) | Wa1 | 3.65 m | 12 ft |
| Unladen weight (with forks) | | 9200 kg | 20283 lb |
| Overall weight | | 9100 kg | 20062 lb |
| Tires type | | Pneumatic | Pneumatic |
| Standard tires | | Alliance 400/80 - 24 - 162A8 | Alliance 400/80 - 24 - 162A8 |
| Forks length / width / section | l / e / s | 1200 mm x 125 mm / 45 mm | 47 in x 5 in / 2 in |
| Performances | | | |
| Lifting | | 9.80 s | 9.80 s |
| Lowering | | 8 s | 8 s |
| Extension | | 14 s | 14 s |
| Retraction | | 10.20 s | 10.20 s |
| Crowd | | 5 s | 5 s |
| Dump | | 3.80 s | 3.80 s |
| Engine | | | |
| Engine brand | | Deutz | Deutz |
| Engine norm | | Stage V | Stage V |
| Engine model | | TD 3.6 L | TD 3.6 L |
| Number of cylinders / Capacity of cylinders | | 4 - 3621 cm³ | 4 - 221 in³ |
| I.C. Engine power rating - Power | | 75 Hp / 55.40 kW | 75 Hp / 55.40 kW |
| Max. torque / Engine rotation | | 340 Nm @ 1600 rpm | 251 ft/lbs @ 1600 rpm |
| Drawbar pull (Laden) | | 7850 daN | 7850 daN |
| Transmission | | | |
| Transmission type | | Torque converter | Torque converter |
| Number of gears (forward / reverse) | | 4 / 4 | 4 / 4 |
| Max. travel speed | | 24.90 km/h | 15 mph |
| Parking brake | | Automatic parking brake | Automatic parking brake |
| Service brake | | Oil-immersed multi-discs braking on front & rear axles | Oil-immersed multi-discs braking on front & rear axles |
| Hydraulics | | | |
| Hydraulic pump type | | Gear pump | Gear pump |
| Hydraulic flow / Pressure | | 125 l/min-270 bar | 33 US gpm-3916 PSI |
| Tank capacities | | | |
| Engine oil | | 10 l | 3 US gal |
| Hydraulic oil | | 140 l | 37 US gal |
| Fuel tank | | 120 l | 32 US gal |
| Noise and vibration | | | |
| Noise at driving position (LpA) | | 78 dB | 78 dB |
| Noise to environment (LWA) | | 103 dB | 103 dB |
| Vibration on hands/arms | | < 2.50 m/s² | < 2.50 m/s² |
| Miscellaneous | | | |
| Steering wheels (front / rear) | | 2 / 2 | 2 / 2 |
| Drive wheels (front / rear) | | 2 / 2 | 2 / 2 |
| Safety / Safety cab homologation | | Standard EN 15000 / ROPS - FOPS level 2 cab | Standard EN 15000 / ROPS - FOPS level 2 cab |
| Controls | | JSM | JSM |

MT 1335 easy ST5 - Dimensional drawing







Head Office

B.P. 249 - 430 rue de l'Aubinière

44150 Ancenis Cedex - France

Tel: +33 (0)2 40 09 10 11 - Fax: +33 (0)2 40 09 10 97

www.manitou.com



This publication provides a description of the configuration versions and options for Manitou products, which may differ for equipment. The equipment presented in this brochure may be part of a series, as an option, or it may not be available, depending on the versions. Manitou reserves the right, at any time and without notice, to amend the specifications described and represented. The specifications provided do not bind the manufacturer. For more details, please contact your Manitou agent. This is not a contractually binding document. The presentation of the products is not contractually binding. List of specifications non-exhaustive. The logos as well as the visual identity of the company are owned by Manitou and cannot be used without authorisation. All rights reserved. The photos and diagrams contained in this brochure are only provided for consultation and information purposes.

MANITOU BF SA - Limited company with board of directors - Share capital: 39,668,399 euros - 857 802 508 RCS Nantes