

Technical sheet :

TJ 65



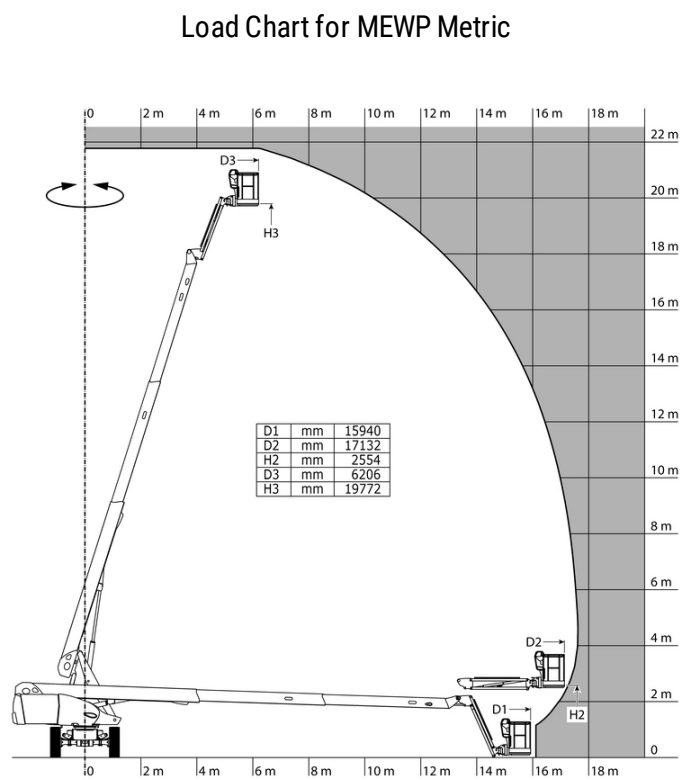
 **MANITOU**
HANDLING YOUR WORLD

Capacities		Metric	Imperial
Working height	h21	21.77 m	71 ft 5 in
Floor height (access)	h20	0.39 m	1 ft 3 in
Platform height	h7	19.77 m	64 ft 10 in
Max. outreach		17.63 m	57 ft 10 in
Pendular arm rotation (top / bottom)		+69 ° / -66 °	+69 ° / -66 °
Turret rotation		360 °	360 °
Platform rotation (right / left)		90 ° / 90 °	90 ° / 90 °
Number of people (indoor)		2	2
Weight and dimensions			
Platform weight*		11850 kg	26125 lb
Platform dimensions (length x width)	lp / ep	2.10 m x 0.80 m	6 ft 11 in x 2 ft 7 in
Overall length	l1	9.80 m	32 ft 2 in
Overall width	b1	2.48 m	8 ft 2 in
Overall height	h17	2.66 m	8 ft 9 in
Overall length (stowed)	l9	7.29 m	23 ft 11 in
Overall height (stowed)	h18	2.72 m	8 ft 11 in
Jib length	l13	2 m	6 ft 7 in
Counterweight offset (turret at 90°)	a7	1.35 m	4 ft 5 in
Counterweight Oversize / Reach		1.34 m	4 ft 5 in
External turning radius	Wa3	6.19 m	20 ft 4 in
Ground clearance at centre of wheelbase	m2	0.44 m	1 ft 5 in
Wheelbase	y	2.80 m	9 ft 2 in
Performances			
Drive speed - stowed		4.40 km/h	3 mph
Drive speed - raised		1 km/h	0.62 mph
Gradeability		40 %	40 %
Wheels			
Tires type		Solid Tires Cured-On	Solid Tires Cured-On
Standard tires		40 x 14 in / 1025 x 365 mm	40 x 14 in / 1025 x 365 mm
Drive wheels (front / rear)		2 / 2	2 / 2
Steering wheels (front / rear)		2 / 0	2 / 0
Braking wheels (front / rear)		0 / 2	0 / 2
Engine/Battery			
Engine brand / model		Kubota - D1803-CR-TIE4B	Kubota - D1803-CR-TIE4B
I.C. Engine power rating / Power		49.60 Hp / 37 kW	49.60 Hp / 37 kW
Miscellaneous			
Ground Pressure		18.20 dan/cm2	264 PSI
Hydraulic Pressure		340 bar	4931 PSI
Hydraulic tank capacity		94 l	25 US gal
Fuel tank		72 l	19 US gal
Vibration on hands/arms		< 0.50 m/s²	< 0.50 m/s²
Standards compliance			
This machine is in compliance with:		ANSI A92.20-2018 CSA B354.6 ICES-002-Issue 6 Standard Canadian EMC	ANSI A92.20-2018 CSA B354.6 ICES-002-Issue 6 Standard Canadian EMC

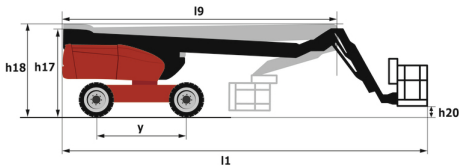
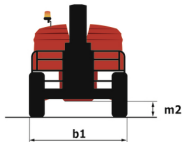
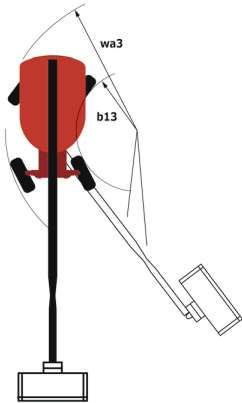
*Varies according to options and standards of the country to which the machine is delivered

** According to "REDUCE cycle"

TJ 65 - Load chart



TJ 65 - Dimensional drawing



Equipment

Standard
4 simultaneous movements
4 wheel drive
Audible alarm and illuminated indicator lamp (leveling, overload, lowering)
Backup electrical pump
Continuous turret rotation
Differential locking on rear axle
Drive enable
Easy Manager
Electronic platform compensation
Emergency stop button in platform and on frame
Engine mounted on sliding platform
Front axle with limited slip
Fuel gauge with low level indicator
Fully galvanized basket with demountable floor
Hour meter
Integrated diagnostic assistance
Leveling unlocking
Management via engine speed bearing
Oscillating front axle
Proportional controls
Optional
110 V American plug with differential circuit breaker
Biodegradable oil
Coded anti-start
Cold weather kit
Electric generator
High-float tires 1046 x 444 / 41x18LL22.5
Key lock on fuel tank
Non-marking tyres
Remote control for transport
SMS : Safe Man System
Screen protection on the lower box control
Water predisposition
Welder ready package
Working light

**Head Office**

B.P. 249 - 430 rue de l'Aubinière

44150 Ancenis Cedex - France

Tel: +33 (0)2 40 09 10 11 - Fax: +33 (0)2 40 09 10 97

www.manitou.com

This publication provides a description of the configuration versions and options for Manitou products, which may differ for equipment. The equipment presented in this brochure may be part of a series, as an option, or it may not be available, depending on the versions. Manitou reserves the right, at any time and without notice, to amend the specifications described and represented. The specifications provided do not bind the manufacturer. For more details, please contact your Manitou agent. This is not a contractually binding document. The presentation of the products is not contractually binding. List of specifications non-exhaustive. The logos as well as the visual identity of the company are owned by Manitou and cannot be used without authorisation. All rights reserved. The photos and diagrams contained in this brochure are only provided for consultation and information purposes.

MANITOU BF SA - Limited company with board of directors - Share capital: 39,668,399 euros - 857 802 508 RCS Nantes