

Ficha técnica :

200 ATJ E

OXYGEN



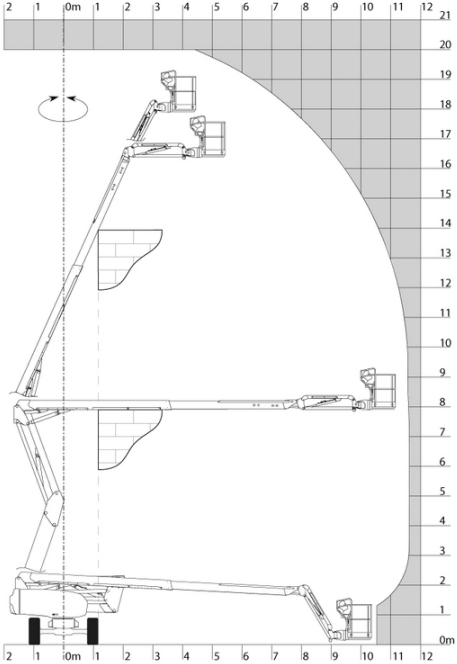
 **MANITOU**
HANDLING YOUR WORLD

Capacities		Métrico
Working height	h21	20 m
Floor height (access)	h20	0.40 m
Platform height	h7	18 m
Max. outreach		11.57 m
Overhang		7.90 m
Pendular arm rotation (top / bottom)		+65 ° / -60 °
Platform capacity	Q	230 kg
Turret rotation		350 °
Platform rotation (right / left)		90 ° / 90 °
Number of people (indoor / outdoor)		2 / 2
Weight and dimensions		
Platform weight*		7100 kg
Platform dimensions (length x width)	lp / ep	1.50 m x 0.75 m
Overall length	l1	8.34 m
Overall width	b1	2.32 m
Overall height	h17	2.46 m
Overall length (stowed)	l9	6.06 m
Overall height (stowed)	h18	2.71 m
Counterweight offset (turret at 90°)	a7	0.64 m
External turning radius	Wa3	5.31 m
Ground clearance at centre of wheelbase	m2	0.38 m
Wheelbase	y	2.30 m
Performances		
Drive speed - stowed		5.30 km/h
Drive speed - raised		0.70 km/h
Gradeability		45 %
Permissible leveling		4 °
Wheels		
Tires type		Solid non-marking tires
Standard tires		910 x 370 mm
Drive wheels (front / rear)		2 / 2
Steering wheels (front / rear)		2 / 0
Braking wheels (front / rear)		0 / 2
Engine/Battery		
Battery voltage		48 V
Battery nominal voltage / capacity		48 V / 460 Ah
Battery energy		22 kWh
On-board charger (V / A)		48 V / 60 A
Miscellaneous		
Ground Pressure		10.90 dan/cm2
Hydraulic Pressure		240 bar
Hydraulic tank capacity		24 l
Noise to environment (LWA)		< 70 dB
Standards compliance		
This machine is in compliance with:		European directives: 2006/42/EC- Machinery (revised EN280:2013) - 2004/108/EC (EMC) - 2006/95/EC (Low voltage)

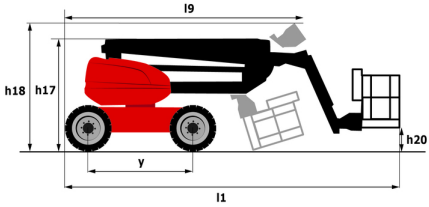
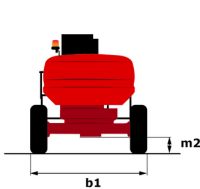
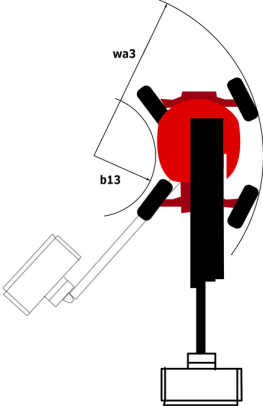
*Varies according to options and standards of the country to which the machine is delivered

200 ATJ e - Diagramas de carga

Load Chart metric



200 ATJ e - Diagrama dimensional



Equipamiento

Estándar

230V Predisposition
4 simultaneous movements
4 wheel drive
Audible alarm and illuminated indicator lamp (leveling, overload, lowering)
Backup electrical pump
Biodegradable oil
CAN bus technology
Dead man pedal
Differential locking on rear axle
Easy Manager
Emergency stop button in platform and on frame
Flat Led Rotating Beacon
Fully galvanized basket with demountable floor
Integrated diagnostic assistance
Large color screen on turret
Lead acid batteries
Multi-voltage integrated charger
Non-marking tyres
Oscillating front axle
Protective cover for control panel
Reserve mode
Screen information in the basket
Simplified lift system
Tool box in platform
Travel possible at maximum height
Two electric motors of 8.5kW and 16kW

Opcional

110 or 230V plug with differential circuit breaker
Biodegradable oil
Coded anti-start
Foam-filled tires 914 x 381 mm / 36X15D610
Fully galvanized basket 1500mm with lateral door
Fully galvanized basket 1800mm / 5'11" with lateral door
Galvanized basket 1,800 mm
Key lock on turret cover
Safety kit - Harness + helmet
Secondary Protection System (SPS)
Water predisposition
Working headlight in platform



Oficina Central

B.P. 249 - 430 rue de l'Aubinière

44150 Ancenis Cedex - Francia

Tel.: 00 33 (0)2 40 09 10 11 - Fax: 00 33 (0)2 40 09 10 97

www.manitou.com



Esta publicación describe las versiones y posibilidades de configuración de los productos Manitou que puedan diferir en equipamiento. Los equipamientos presentados en este folleto pueden ser de serie, opcionales o no estar disponibles en algunas versiones. Manitou se reserva el derecho, en cualquier momento y sin previo aviso, de modificar las especificaciones descritas y representadas. Las especificaciones aportadas no comprometen al fabricante. Para más información, póngase en contacto con su concesionario Manitou. Documento no contractual. Presentación de los productos no contractual. Lista de especificaciones no exhaustiva. Los logos y la identidad visual de la empresa son propiedad de Manitou y no pueden ser utilizados sin autorización. Todos los derechos reservados. Las fotos y los esquemas contenidos en este folleto se ofrecen para consulta y a título indicativo solamente.

Manitou BF SA - Sociedad anónima con Consejo de Administración - Capital social: 39 668 399 euros - 857 802 508 RCS Nantes