

DL12-55 GEN:3

DL

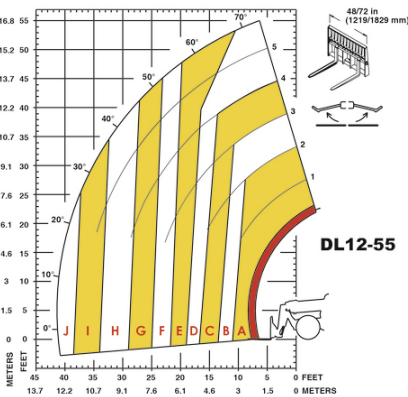


GEHL®

Capacities		Metric		Imperial	
Max. capacity			5443.10 kg		12000 lb
Max. lifting height			16.89 m		55 ft 5 in
Max. outreach			12.20 m		40 ft
Weight and dimensions					
Length to face of forks	l2		6.40 m		21 ft
Overall width	b1		2.50 m		8 ft 2 in
Overall height	h17		2.60 m		8 ft 6 in
Wheelbase	y		3.30 m		10 ft 10 in
Ground clearance	m4		406 mm		16 in
Overall cab width	b4		2.50 m		8 ft 2 in
External turning radius	Wa3		0.88 m		2 ft 11 in
Unladen weight			14443 kg		31841 lb
Overall weight			14442 kg		31839 lb
Standard tires			14 x 24		14 x 24
Frame leveling longitudinal +/-			10 °		10 °
Frame leveling corrector	a9		10 °		10 °
Engine					
Engine brand			Cummins		Cummins
Engine norm			Tier 4 final		Tier 4 final
Engine model			QSF 3.8 Tier IV		QSF 3.8 Tier IV
I.C. Engine power rating - Power			120 Hp / 89 kW		120 Hp / 89 kW
Engine rotation			2500 rpm		2500 rpm
Transmission					
Transmission type			Powershift		Powershift
Number of gears (forward / reverse)			4 / 4		4 / 4
Max. travel speed			36.70 km/h		23 mph
Parking brake			SAHR		SAHR
Service brake			Wet disc brakes		Wet disc brakes
Axle Manufacturer			Dana		Dana
Hydraulics					
Hydraulic pump type			Gear pump		Gear pump
Hydraulic flow / Pressure			162.80 l/min-207 bar		43 US gpm-3002 PSI
Tank capacities					
Hydraulic oil			155 l		41 US gal
Fuel tank			114 l		30 US gal
Miscellaneous					
Steering wheels (front / rear)			2 / 2		2 / 2
Drive wheels (front / rear)			2 / 2		2 / 2
Safety cab homologation			ROPS/FOPS		ROPS/FOPS
Controls			Single joystick with FNR		Single joystick with FNR

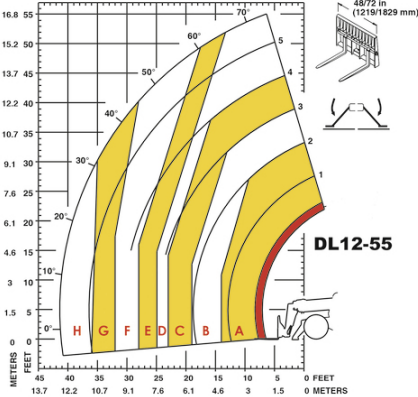
DL12-55 GEN:3 - Load chart

Machine on tyres with forks Imperial

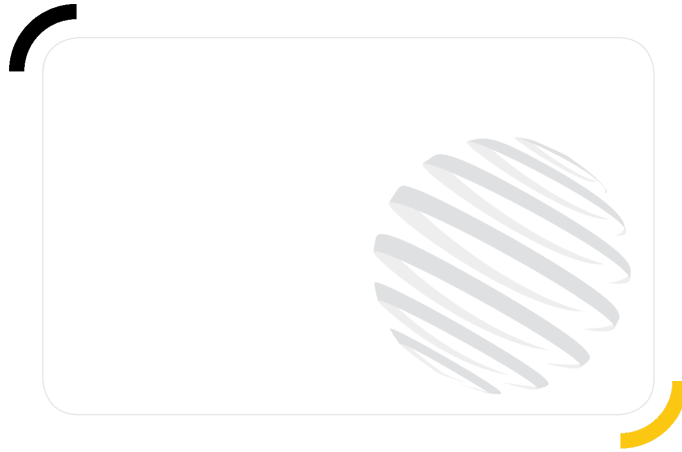


- ▲ 12,000 lbs. (5443 kg)
- A 10,000 lbs. (4536 kg)
- B 8,000 lbs. (3629 kg)
- C 6,000 lbs. (2722 kg)
- D 5,000 lbs. (2268 kg)
- E 4,000 lbs. (1814 kg)
- F 3,000 lbs. (1361 kg)
- G 2,000 lbs. (907 kg)
- H 1,000 lbs. (454 kg)
- I 500 lbs. (227 kg)
- J 250 lbs. (113 kg)

Machine on lowered stabilisers with forks Imperial



- ▲ 12,000 lbs. (5443 kg)
- A 10,000 lbs. (4536 kg)
- B 8,000 lbs. (3629 kg)
- C 6,000 lbs. (2722 kg)
- D 5,500 lbs. (2495 kg)
- E 5,000 lbs. (2268 kg)
- F 4,000 lbs. (1814 kg)
- G 3,000 lbs. (1361 kg)
- H 2,000 lbs. (907 kg)



GEHL®

Siège Social
P.O. Box 179 - One Gehl Way - West Bend, WI, USA 53095
Tel: (262) 334-9461 - Fax: (262) 338-7517
www.gehl.com



This brochure describes versions and configuration options for Gehl products which may be fitted with different equipment. The equipment described in this brochure may be standard, optional or not available depending on version. Gehl reserves the right to change the specifications shown and described at any time and without prior warning. The manufacturer is not liable for the specifications given. For more information, contact your Gehl dealer. Non-contractual document. Product descriptions may differ from actual products. List of specifications is not comprehensive. The logos and visual identity of the company are the property of Gehl and may not be used without authorization. All rights reserved. The photos and diagrams contained in this brochure are provided for information only.

MANITOU EQUIPMENT AMERICAS, LLC - Limited company with board of directors - Share capital: 39,668,399 euros - 857 802 508 RCS West Bend