

RS8-44 MARK74

RS

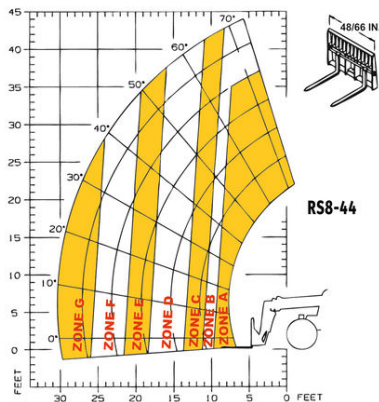


GEHL®

Capacities			Metric	Imperial
Max. capacity			3629 kg	8000.57 lbs
Max. lifting height			13.40 m	43 ft 11.55 in
Max. Reach			9.27 m	30 ft 4.96 in
Weight and dimensions				
Overall length to carriage	l11		6.04 m	19 ft 9.79 in
Overall width	b1		2.50 m	8 ft 2.42 in
Overall height	h17		2.34 m	7 ft 8.12 in
Wheelbase	y		3.05 m	10 ft 0.07 in
Ground clearance	m4		406 mm	1 ft 3.98 in
Overall cab width	b4		838 mm	2 ft 8.99 in
Tilt-up angle	a4		12 °	12 °
Tilt-down angle	a5		112 °	112 °
External turning radius	Wa3		4.17 m	13 ft 8.17 in
Unladen weight			10660 kg	23501.27 lbs
Standard tyres			13 x 24	13 x 24
Frame levelling longitudinal +/-			10 °	10 °
Engine				
Engine brand			Cummins	Cummins
Engine norm			Stage IV / Tier 4 Final	Stage IV / Tier 4 Final
Engine model			QSF 3.8	QSF 3.8
Power (kW)			55 kW	55 kW
Max. torque / Engine rotation			400 Nm @ 2500 rpm	400 Nm @ 2500 rpm
Transmission				
Transmission type			Torque Converter with powershift	Torque Converter with powershift
Number of gears (forward / reverse)			4 / 3	4 / 3
Max. travel speed			24.14 km/h	14.99 mph
Parking brake			SAHR	SAHR
Service brake			Wet disc brakes	Wet disc brakes
Axle Manufacturer			Dana	Dana
Hydraulics				
Hydraulic pump type			Gear pump	Gear pump
Hydraulic flow / Pressure			157 l/min / 207 bar	157 l/min / 3002.27 PSI
Tank capacities				
Hydraulic oil			117.35 l	31 US gal
Fuel tank			178 l	47.02 US gal
Miscellaneous				
Steering wheels (front / rear)			2 / 2	2 / 2
Drive wheels (front / rear)			2 / 2	2 / 2
Safety cab homologation			ROPS/FOPS	ROPS/FOPS
Controls			Single Joystick FNR	Single Joystick FNR

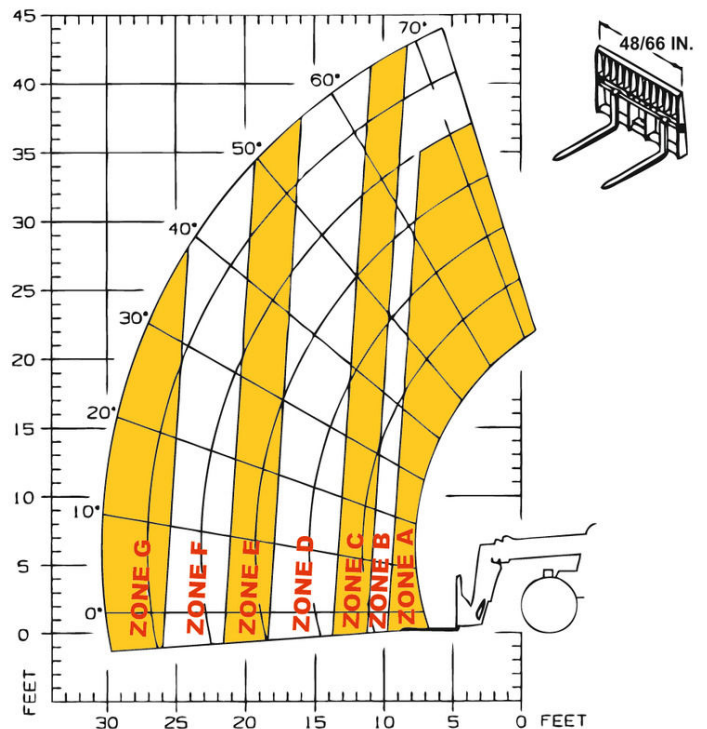
Load chart

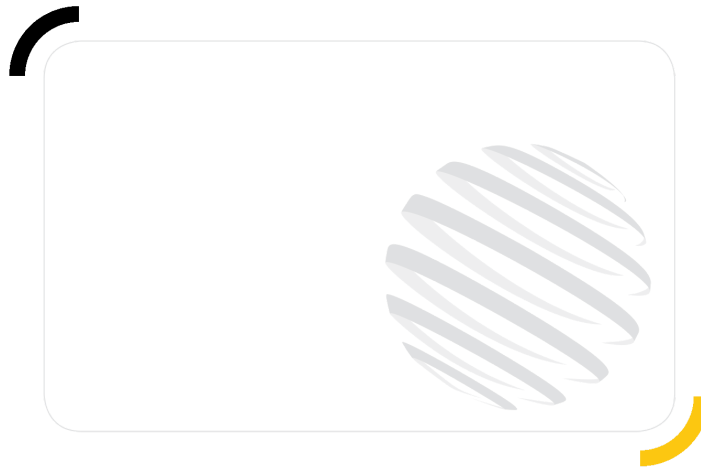
Load Chart Other Imperial



- A 8,000/8,000 lbs. (3629/3629 kg)
 - B 7,000/8,000 lbs. (3175/3629 kg)
 - C 6,000/6,000 lbs. (2722/2722 kg)
 - D 4,000/6,000 lbs. (1814/2722 kg)
 - E 3,000/4,000 lbs. (1361/1814 kg)
 - F 2,000/4,000 lbs. (907/1814 kg)
 - G 1,000/3,000 lbs. (454/1361 kg)
- outriggers up / optional outriggers down

Load Chart imperial





GEHL®

Siège Social
P.O. Box 179 - One Gehl Way - West Bend, WI, USA 53095
Tel: (262) 334-9461 - Fax: (262) 338-7517
www.gehl.com



This brochure describes versions and configuration options for Gehl products which may be fitted with different equipment. The equipment described in this brochure may be standard, optional or not available depending on version. Gehl reserves the right to change the specifications shown and described at any time and without prior warning. The manufacturer is not liable for the specifications given. For more information, contact your Gehl dealer. Non-contractual document. Product descriptions may differ from actual products. List of specifications is not comprehensive. The logos and visual identity of the company are the property of Gehl and may not be used without authorization. All rights reserved. The photos and diagrams contained in this brochure are provided for information only.

MANITOU EQUIPMENT AMERICAS, LLC - Limited company with board of directors - Share capital: 39,668,399 euros - 857 802 508 RCS West Bend