

Technical sheet :

# MT 1840

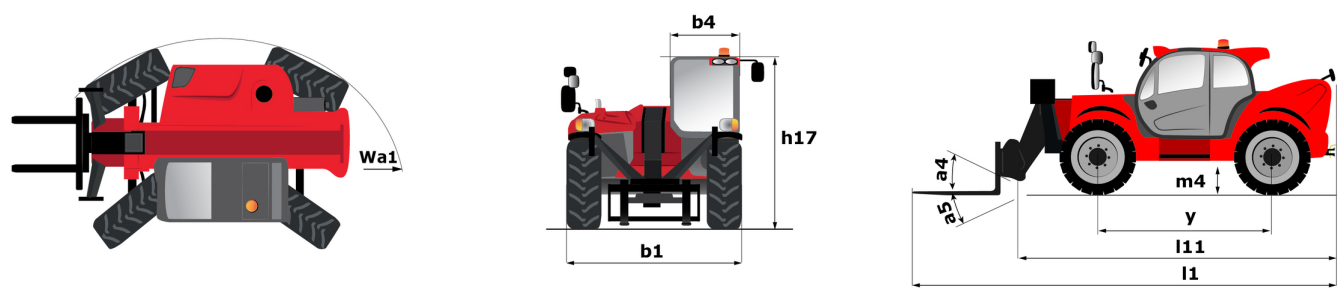
---



 **MANITOU**  
HANDLING YOUR WORLD

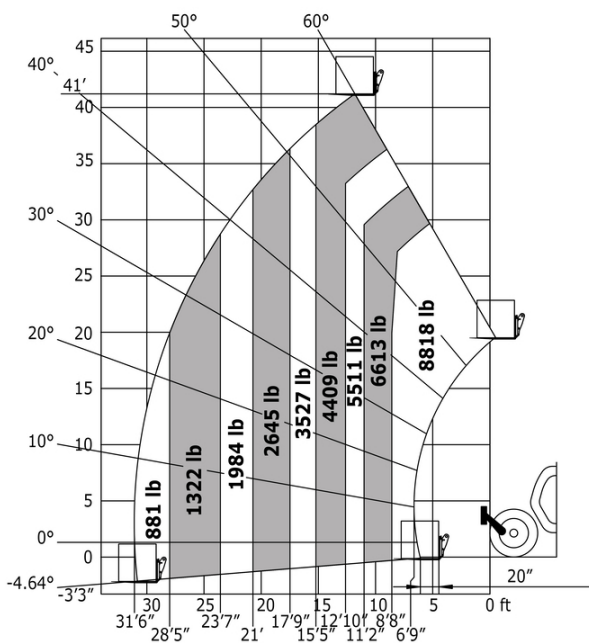
Capacities		Imperial
Max. capacity		8818 lb
Max. lifting height		57 ft 7 in
Maximum outreach		42 ft 11 in
Breakout force with bucket		7766 daN
Weight and dimensions		
Overall length to carriage	l11	20 ft 2 in
Length to face of forks	l2	20 ft 7 in
Overall width	b1	7 ft 9 in
Overall height	h17	8 ft
Wheelbase	y	10 ft 1 in
Ground clearance	m4	1 ft 3 in
Overall cab width	b4	2 ft 11 in
Tilt-up angle	a4	12 °
Tilt-down angle	a5	114 °
External turning radius (over tyres)	Wa1	12 ft 11 in
Unladen weight (with forks)		26169 lb
Overall weight		26015 lb
Tires type		Pneumatic
Standard tires		Alliance 400/80 - 24 - 162A8
Forks length / width / section	l / e / s	47 in x 5 in x 2 in
Performances		
Lifting		16 s
Lowering		12 s
Extension		16 s
Retraction		13 s
Crowd		4 s
Dump		4 s
Engine		
Engine brand		Perkins
Engine norm		Stage IV, Tier 4 final
Engine model		854F-E34TA
Number of cylinders / Capacity of cylinders		4 - 207 in³
I.C. Engine power rating - Power		100 Hp / 75 kW
Max. torque / Engine rotation		317 ft/lbs @ 1400 rpm
Drawbar pull (Laden)		6680 daN
Transmission		
Transmission type		Torque converter
Number of gears (forward / reverse)		4 / 4
Max. travel speed		15 mph
Max. travel speed (may vary according to applicable regulations)		15 mph
Parking brake		Automatic parking brake
Service brake		Oil-immersed multi-discs braking on front & rear axles
Hydraulics		
Hydraulic pump type		Gear pump
Hydraulic flow / Pressure		44 US gpm-3916 PSI
Tank capacities		
Engine oil		2 US gal
Hydraulic oil		36 US gal
Diesel Exhaust fluid (AdBlue® type)		6 US gal
Hydraulic tank capacity		36 US gal
Fuel tank		37 US gal
Noise and vibration		
Noise at driving position (LpA)		78 dB
Noise to environment (LwA)		103 dB
Vibration on hands/arms		< 2.50 m/s²
Miscellaneous		
Steering wheels (front / rear)		2 / 2
Drive wheels (front / rear)		2 / 2
Safety / Cab certification		Standard EN 15000 / Cabin ROPS - FOPS level 2
Controls		JSM

MT 1840 - Dimensional drawing

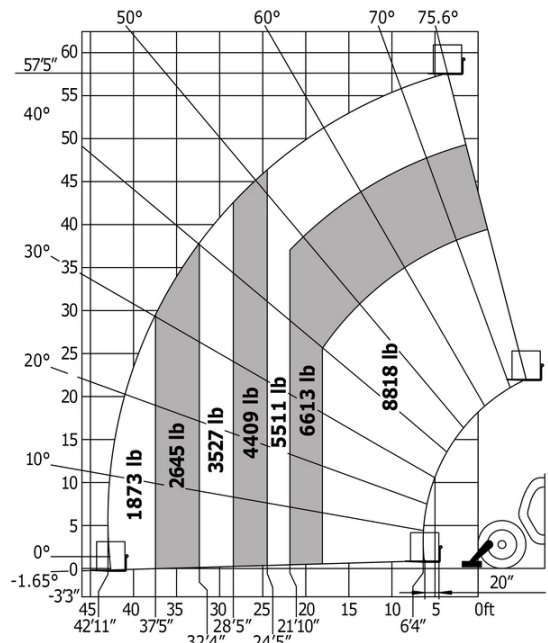


MT 1840 - Load chart

Machine on tires with forks Imperial



Machine on lowered stabilisers with forks Imperial





**Head Office**

B.P. 249 - 430 rue de l'Aubinière

44150 Ancenis Cedex - France

Tel: +33 (0)2 40 09 10 11 - Fax: +33 (0)2 40 09 10 97

[www.manitou.com](http://www.manitou.com)



This publication provides a description of the configuration versions and options for Manitou products, which may differ for equipment. The equipment presented in this brochure may be part of a series, as an option, or it may not be available, depending on the versions. Manitou reserves the right, at any time and without notice, to amend the specifications described and represented. The specifications provided do not bind the manufacturer. For more details, please contact your Manitou agent. This is not a contractually binding document. The presentation of the products is not contractually binding. List of specifications non-exhaustive. The logos as well as the visual identity of the company are owned by Manitou and cannot be used without authorisation. All rights reserved. The photos and diagrams contained in this brochure are only provided for consultation and information purposes.

MANITOU BF SA - Limited company with board of directors - Share capital: 39,668,399 euros - 857 802 508 RCS Nantes