

Technical sheet :

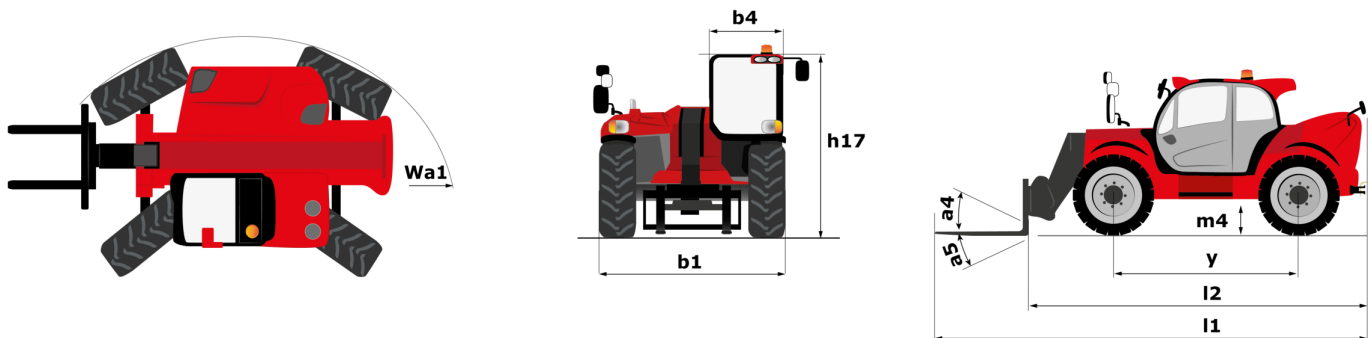
MHT-X 790



 **MANITOU**
HANDLING YOUR WORLD

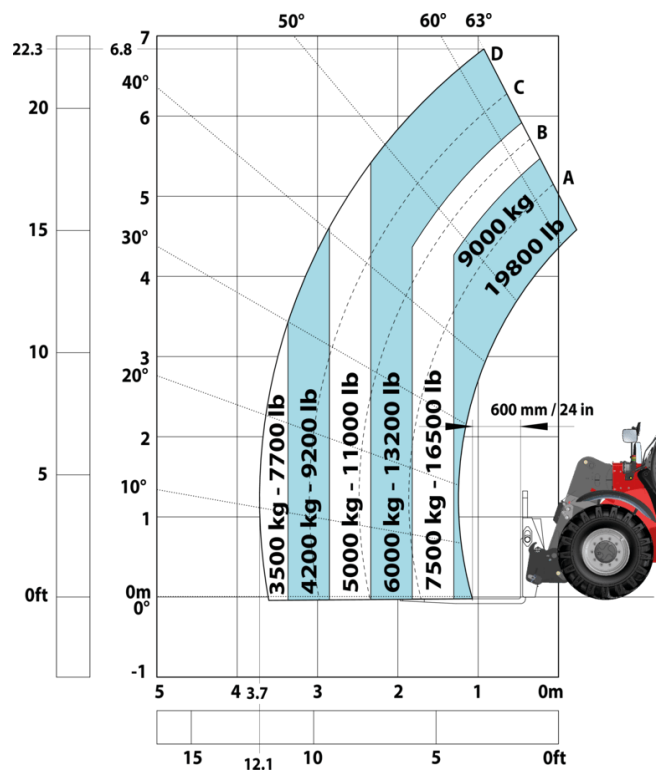
Capacities		Imperial
Max. capacity		19842 lb
Load center of gravity	c	24 in
Max. lifting height		22 ft 5 in
Max. outreach		12 ft 2 in
Weight and dimensions		
Unladen weight (with forks)		29013 lb
Ground clearance	m4	1 ft 4 in
Wheelbase	y	9 ft 5 in
Length to face of forks	l2	17 ft 3 in
Overall width	b1	8 ft 1 in
Overall height	h17	8 ft 1 in
Overall cab width	b4	3 ft 1 in
Tilt-down angle	a5	125 °
Tilt-up angle	a4	12 °
External turning radius (over tyres)	Wa1	16 ft
Outer turning radius (with forks)	b15	18 ft 4 in
Forks length / width / section	l / e / s	47 in x 8 in / 2 in
Wheels		
Standard tires		Aeolus - TLAG P23 - 445/65 R22,5
Number of front wheels / rear wheels		2 / 2
Steering wheels (front / rear)		2 / 2
Drive wheels (front / rear)		2 / 2
Steering mode		2 wheel steer, 4 wheel steer, Crab mode
Engine		
Engine brand		John Deere
Engine norm		Stage IIIA
Engine model		4045PWX
Number of cylinders / Capacity of cylinders		4 - 275 in³
I.C. Engine power rating / Power		137 Hp / 102 kW
Max. torque / Engine rotation		394 ft/lbs@1500 rpm
Engine cooling system		Water
Battery voltage		12 V
Drawbar pull		10905 daN
Transmission		
Transmission type		Hydrostatic
Number of gears (forward / reverse)		2 / 2
Max. travel speed		19 mph
Parking brake		Automatic Negative Hand-brake
Service brake		Hydraulic
Gradeability (laden / unladen)		37.40 % / 48.10 %
Hydraulics		
Hydraulic pump type		Variable displacement pump
Hydraulic flow - Pressure		48 US gpm - 3916 PSI
Tank capacities		
Engine oil		3 US gal
Hydraulic oil		40 US gal
Fuel tank		40 US gal
Noise and vibration		
Noise at driving position (LpA)		79.70 dB
Noise to environment (LwA)		103 dB
Vibration on hands/arms		< 2.50 m/s²
Miscellaneous		
Safety / Safety cab homologation		Standard EN 15000 - ROPS - FOPS level 2 cab
Controls		JSM

MHT-X 790 - Dimensional drawing

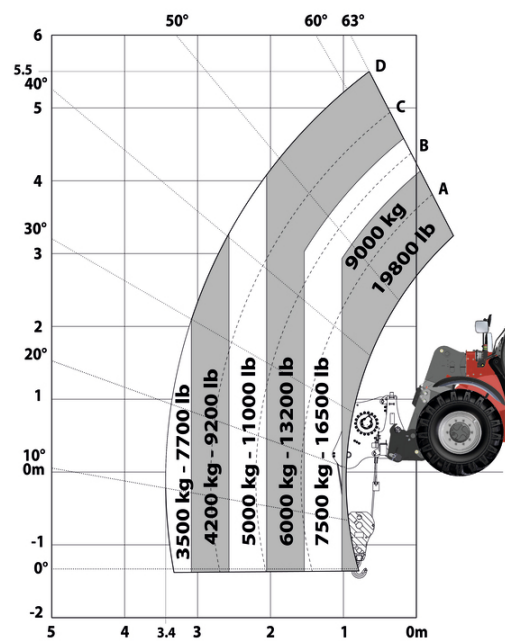


MHT-X 790 - Load chart

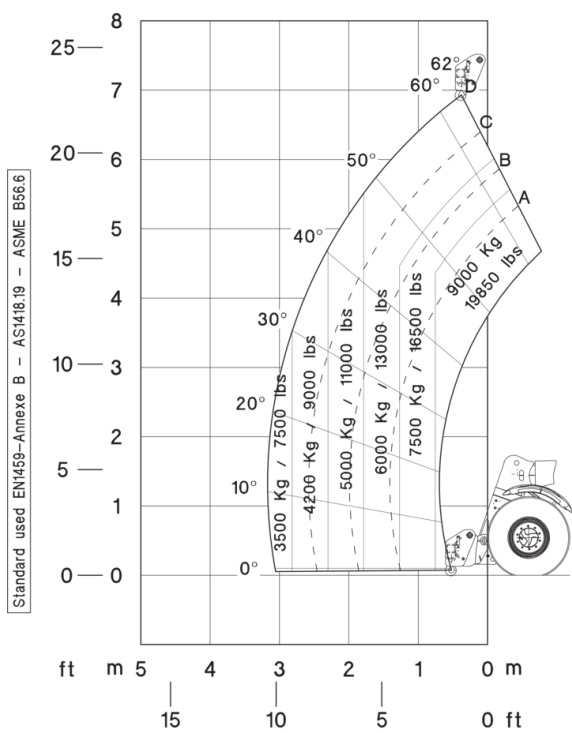
Machine on tyres with forks LC 600 mm (Imperial)



Machine on tyres with winch 9000 kg (Imperial)



Machine on tyres with jib Imperial





Head Office

B.P. 249 - 430 rue de l'Aubinière

44150 Ancenis Cedex - France

Tel: +33 (0)2 40 09 10 11 - Fax: +33 (0)2 40 09 10 97

www.manitou.com



This publication provides a description of the configuration versions and options for Manitou products, which may differ for equipment. The equipment presented in this brochure may be part of a series, as an option, or it may not be available, depending on the versions. Manitou reserves the right, at any time and without notice, to amend the specifications described and represented. The specifications provided do not bind the manufacturer. For more details, please contact your Manitou agent. This is not a contractually binding document. The presentation of the products is not contractually binding. List of specifications non-exhaustive. The logos as well as the visual identity of the company are owned by Manitou and cannot be used without authorisation. All rights reserved. The photos and diagrams contained in this brochure are only provided for consultation and information purposes.

MANITOU BF SA - Limited company with board of directors - Share capital: 39,668,399 euros - 857 802 508 RCS Nantes