

Technical sheet :

# MRT 3050 PRIVILEGE PLUS



 **MANITOU**  
HANDLING YOUR WORLD

Capacities		Imperial
Max. capacity		11021 lb
Max. lifting height		96 ft 9 in
Max. outreach		84 ft 8 in
Weight and dimensions		
Overall length (with forks)	l1	29 ft 7 in
Length to face of forks	l2	25 ft 8 in
Overall width	b1	8 ft 2 in
Overall height	h17	10 ft
Overall cab width	b4	3 ft 3 in
Outer frame turning radius	Wa3	16 ft 1 in
Ground clearance	m4	1 ft 2 in
Wheelbase	y	10 ft 8 in
Tilt-up angle	a4	12 °
Tilt-down angle	a5	108 °
Turret rotation		360 °
Overall weight		48083 lb
Forks length / width / section	l / e / s	47 in x 2 in x 5 in
Wheels		
Tires type		Pneumatic
Standard tires		445/65 R22,5
Drive wheels (front / rear)		2 / 2
Steering mode		2 wheel steer, 4 wheel steer, Crab mode
Stabilisers		
Stabs Type		Telescopic Duplex
Controls with stabs		Stabs Commands Individual or Simultaneous
Engine		
Engine brand		Mercedes
Engine norm		Stage IV / Tier 4 Final
Engine model		OM 934 LA.E4-3
I.C. Engine power rating / Power / Engine rotation		176 Hp / 129 kW @ 1600 rpm
Max. torque / Engine rotation (min)		553 ft/lbs @ 1200 rpm
Number of cylinders - Capacity of cylinders		4 - 313 in³
Injection		engine Injection direct
Engine cooling system		Water
Electric circuit		
Number of batteries / Battery voltage		2 x 12 V
12V Battery capacity		120 Ah
Transmission		
Transmission type		Hydrostatic
Number of gears (forward / reverse)		2 / 2
Max. travel speed		25 mph
Drawbar pull		9500 daN
Parking brake		Automatic Negative Hand-brake
Service brake		Hydraulic
Hydraulics		
Hydraulic pump type		Variable pump
Hydraulic flow		48 US gpm
Hydraulic Pressure		5076 PSI
Hydraulic tank capacity		77 US gal
Tank capacities		
Engine oil		6 US gal
Hydraulic oil		77 US gal
Fuel tank		77 US gal
Diesel Exhaust fluid (AdBlue® type)		15 US gal
Noise and vibration		
Noise at driving position (LpA)		79.70 dB
Noise to environment (LwA)		108 dB
Vibration to whole hand/arm		< 2.50 m/s²
Miscellaneous		
Steering wheels (front / rear)		2 / 2
Controls		2 Joysticks
Safety cab homologation		ROPS - FOPS level 2 cab
Attachment recognition system (E-Reco)		Standard

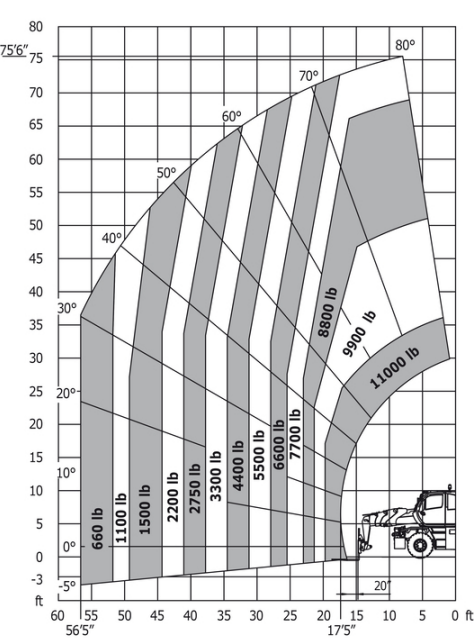
MRT 3050 Privilege Plus - Dimensional drawing



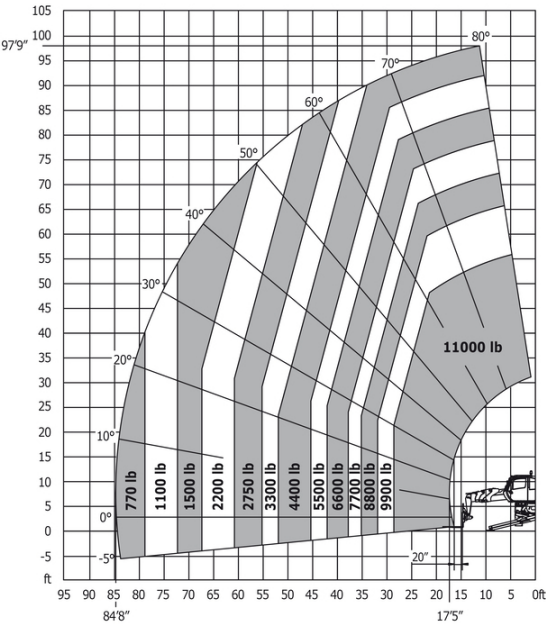
Other data		Imperial
Length of frame	l14	18 ft 5 in
Wheelbase	y	10 ft 8 in
Ground clearance	m4	1 ft 2 in
Counterweight offset (turret at 90°)	a7	11 ft 3 in
Tilt-up angle	a4	12 °
Tilt-down angle	a5	108 °
Overall length at stabilisers	l12	18 ft 5 in
Outer frame turning radius	Wa3	16 ft 1 in
Outer turning radius (with forks)	b15	21 ft 4 in
Overall width with stabilisers extended	b7	19 ft 11 in
Overall height	h17	10 ft
Frame leveling corrector	a9	+/- 7.40 °
Ground clearance under front tires on stabilizers	m5	1 ft 1 in

MRT 3050 Privilege Plus - Load chart

Machine on tyres with forks Imperial



Machine on lowered stabilisers with forks Imperial





**Head Office**

B.P. 249 - 430 rue de l'Aubinière

44150 Ancenis Cedex - France

Tel: +33 (0)2 40 09 10 11 - Fax: +33 (0)2 40 09 10 97

[www.manitou.com](http://www.manitou.com)



This publication provides a description of the configuration versions and options for Manitou products, which may differ for equipment. The equipment presented in this brochure may be part of a series, as an option, or it may not be available, depending on the versions. Manitou reserves the right, at any time and without notice, to amend the specifications described and represented. The specifications provided do not bind the manufacturer. For more details, please contact your Manitou agent. This is not a contractually binding document. The presentation of the products is not contractually binding. List of specifications non-exhaustive. The logos as well as the visual identity of the company are owned by Manitou and cannot be used without authorisation. All rights reserved. The photos and diagrams contained in this brochure are only provided for consultation and information purposes.

MANITOU BF SA - Limited company with board of directors - Share capital: 39,668,399 euros - 857 802 508 RCS Nantes