

Technical sheet :

ATJ 46+

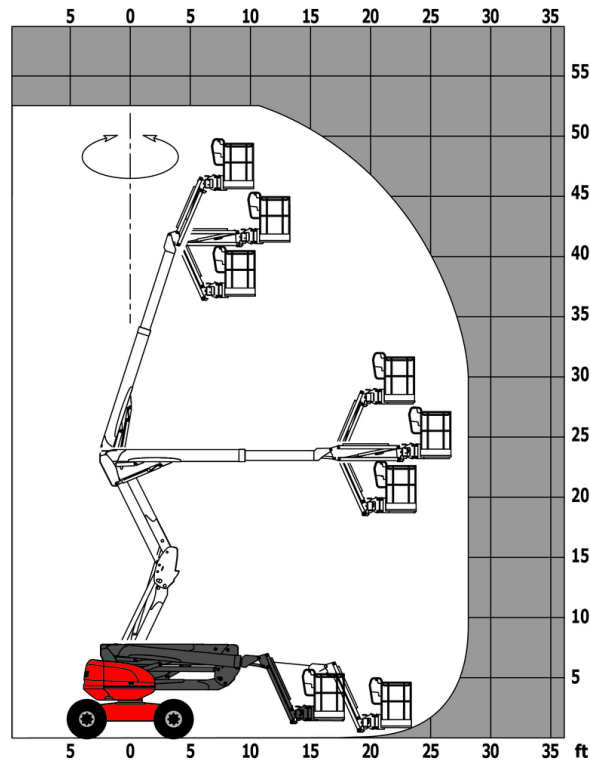


 **MANITOU**
HANDLING YOUR WORLD

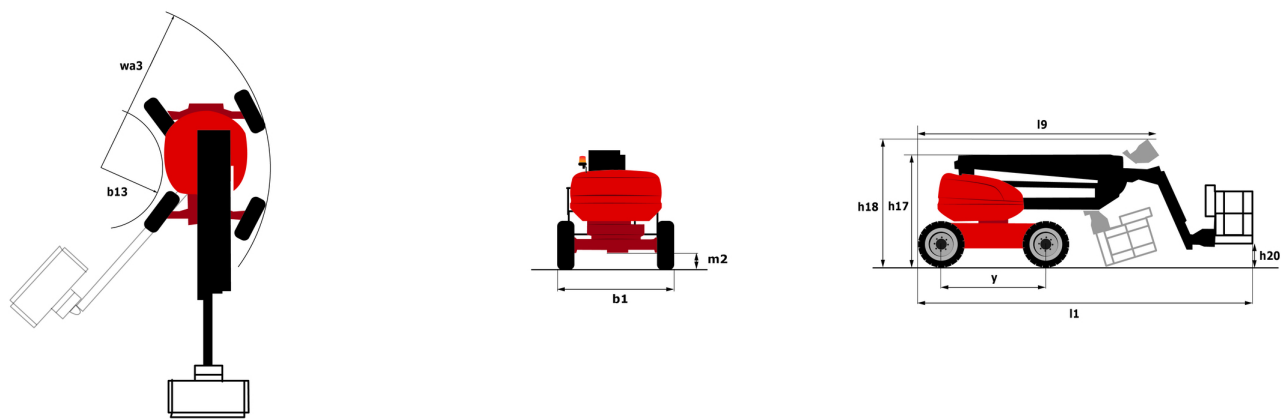
| Capacities | | Imperial |
|---|---------|---|
| Working height | h21 | 53 ft 2 in |
| Floor height (access) | h20 | 1 ft 3 in |
| Platform height | h7 | 46 ft 7 in |
| Max. outreach | | 26 ft 4 in |
| Overhang | | 24 ft 11 in |
| Pendular arm rotation (top / bottom) | | +66.50 ° / 65.80 ° |
| Platform capacity | Q | 899 lb |
| Turret rotation | | 360 ° |
| Platform rotation (right / left) | | 90 ° / 90 ° |
| Weight and dimensions | | |
| Platform weight* | | 16535 lb |
| Platform dimensions (length x width) | lp / ep | 7 ft 7 in x 2 ft 11 in |
| Overall length | l1 | 23 ft 3 in |
| Overall width | b1 | 8 ft |
| Overall height | h17 | 8 ft 1 in |
| Overall length (stowed) | l9 | 16 ft 1 in |
| Overall height (stowed) ** | h18 | 9 ft 8 in |
| Counterweight offset (turret at 90°) | a7 | 6 in |
| External turning radius | Wa3 | 13 ft 5 in |
| Ground clearance at centre of wheelbase | m2 | 1 ft 4 in |
| Wheelbase | y | 7 ft 3 in |
| Performances | | |
| Drive speed - stowed | | 3 mph |
| Drive speed - raised | | 0.62 mph |
| Gradeability | | 45 % |
| Wheels | | |
| Tires type | | Foam-filled |
| Standard tires | | 36 x 15 D610 / 910 x 370 mm |
| Drive wheels (front / rear) | | 2 / 2 |
| Steering wheels (front / rear) | | 2 / 2 |
| Braking wheels (front / rear) | | 0 / 2 |
| Engine/Battery | | |
| Engine brand / model | | Kubota - D1105-E4B |
| Engine norm | | Tier 4 final |
| I.C. Engine power rating / Power | | 24.80 Hp / 18.50 kW |
| Miscellaneous | | |
| Ground Pressure | | 167 PSI |
| Hydraulic Pressure | | 4931 PSI |
| Hydraulic tank capacity | | 14 US gal |
| Fuel tank | | 13 US gal |
| Noise to environment (LwA) | | < 105 dB |
| Standards compliance | | |
| This machine is in compliance with: | | ANSI A92.20-2018 CSA B354.6 ICES-002-Issue 6 Standard Canadian EMC |

ATJ 46+ - Load chart

Load Chart for MEWP (Imperial)



ATJ 46+ - Dimensional drawing



Equipment

| Standard |
|---|
| 110 V American plug with differential circuit breaker |
| 4 simultaneous movements |
| 4 wheel steer with crab mode |
| Additional storage boxes |
| Audible alarm and illuminated indicator lamp (leveling, overload, lowering) |
| Battery cut-off |
| CAN bus technology |
| Dead man pedal |
| Differential locking on rear axle |
| Drive safety orientation system |
| Easy Manager |
| Emergency stop button in platform and on frame |
| Front axle with limited slip |
| Fuel gauge with low level indicator |
| Galvanize basket mesh floor |
| Lift and drive |
| Lockable fuel cap |
| Management via engine speed bearing |
| Oscillating front axle |
| Pendular arm |
| Proportional controls |
| Protective cover for control panel |
| Steer and rotate |
| Swinging gate on platform |

| Optional |
|-----------------------------|
| Biodegradable oil |
| Cold weather kit |
| Cold weather protection oil |
| Electric generator |
| Lockable turret cover |
| SMS : Safe Man System |
| Working light |



Head Office

B.P. 249 - 430 rue de l'Aubinière

44150 Ancenis Cedex - France

Tel: +33 (0)2 40 09 10 11 - Fax: +33 (0)2 40 09 10 97

www.manitou.com



This publication provides a description of the configuration versions and options for Manitou products, which may differ for equipment. The equipment presented in this brochure may be part of a series, as an option, or it may not be available, depending on the versions. Manitou reserves the right, at any time and without notice, to amend the specifications described and represented. The specifications provided do not bind the manufacturer. For more details, please contact your Manitou agent. This is not a contractually binding document. The presentation of the products is not contractually binding. List of specifications non-exhaustive. The logos as well as the visual identity of the company are owned by Manitou and cannot be used without authorisation. All rights reserved. The photos and diagrams contained in this brochure are only provided for consultation and information purposes.

MANITOU BF SA - Limited company with board of directors - Share capital: 39,668,399 euros - 857 802 508 RCS Nantes