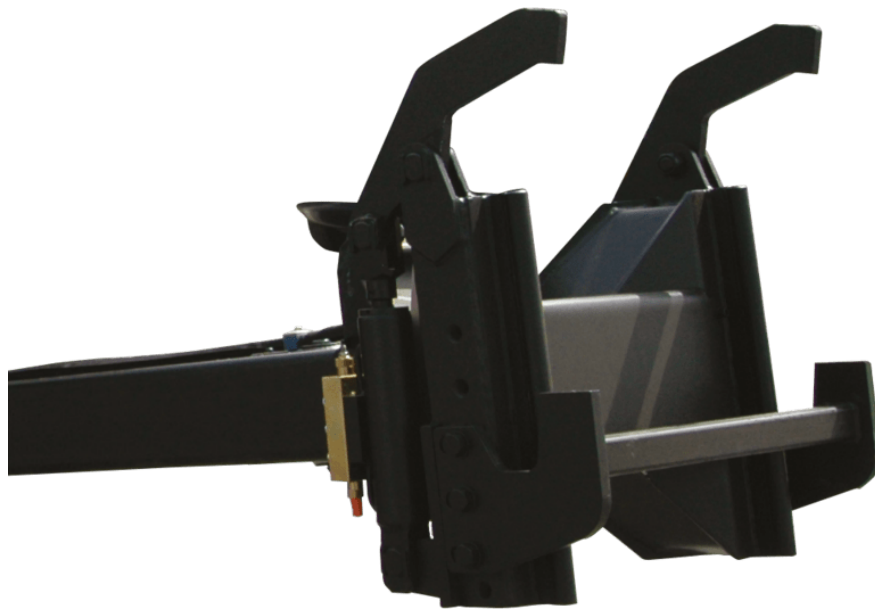


Technical sheet :

RIB HANDLING CLAMP





Benefits





- THE clamp for all rib handlings & placements.
- Efficient & accurate rib placement.
- Safety: prevents from suspending ribs on forks or hooks.
- To be controlled from the machine's cab or with a remote control.
- Note: rib placement with a vertical attachment only. Ribs can be grabbed on the ground using the machine's titling.

Technical characteristics

- Capacity 2000 kg or 4000 kg.
- 45° hydraulic arm movement.
- 65°/65° manual head rotation.
- Wide hydraulic clamp opening: min/ beam width 120 mm, max. 450 mm.
- Note: 906734 ref is equipped with cab and radio control steering. 882008 if cab steering only.
- Note: dedicated machine option required.
- MRT Vision/ Vision+: no machine equipment required.
- MRT Vision/ Vision+: adaptation plug required to use and older model on the machines. Contact the spare part department.

Capacities	CLR 4000	PSC 40
Capacity (kg)	4000	4000
Weight and dimensions		
Overall weight (kg)	760	450
Arm length (mm)	1517	1517
Working Parameters		
Machine Equipement		
Opening minimum (mm)	203	203
Opening maximum (mm)	480	480
Rotation 1	45	45
Rotation 2	130	130

Machines compatibility	CLR 4000	PSC 40
Reference number E-RECO	52721819	923970
MRT 1645 75	X	-
MRT 1645 115	X	-
MRT 1845 75	X	-
MRT 1845 115	X	-
MRT 2145 115	X	-
MRT 2260	X	-
MRT 2545 115	X	-
MRT 2570	X	-
MRT 2660	X	-
MRT 3060	X	-
MRT 3570	X	-
MRT 3570 ES	X	-
MRT-X 1645	X	-
MRT-X 1845	X	-
MRT-X 2145	X	-
MRT-X 2260	X	-
MRT-X 2545	X	-
MRT-X 2570	X	-
MRT-X 2660	X	-
MRT-X 3060	X	-
MRT-X 3570	X	-
MRT-X 3570 ES	X	-
MRT 1640 Easy T4 S2 360° OLD	-	X
MRT 1840 Easy T4 S2 360° OLD	-	X
MRT 1840 Easy T4 S2 400° OLD	-	X
MRT 2145 Easy T4 S2 360° OLD	-	X
MRT 2145 Easy T4 S2 400° OLD	-	X
MRT 2150 Privilege Plus OLD	-	X
MRT 2545 Easy T4 S2 360° OLD	-	X
MRT 2545 Easy T4 S2 400° OLD	-	X
MRT 2550 Privilege Plus OLD	-	X
MRT-X 1440 Easy 400° OLD	-	X
MRT-X 1640 Easy 360° OLD	-	X
MRT-X 1640 Easy 400° OLD	-	X
MRT-X 1840 Easy 360° OLD	-	X
MRT-X 1840 Easy 400° OLD	-	X
MRT-X 2150 Privilege Plus OLD	-	X
MRT-X 2545 Easy 360° OLD	-	X
MRT-X 2545 Easy 400° OLD	-	X
MRT-X 2550 Privilege Plus OLD	-	X
Reference number E-RECO 2	-	53027173
MRT 2470 Privilege Plus OLD	-	X
MRT 2550 Privilege Plus OLD	-	X
MRT-X 2470 Privilege Plus OLD	-	X
MRT-X 2550 Privilege Plus OLD	-	X

TABLE SYMBOL					
	No predisposition required		Hydraulic line		Return piping to hydraulic oil tank
	Electric predisposition		Platform predisposition		Tyre handler, cylinder handler predisposition



Head Office

B.P. 249 - 430 rue de l'Aubinière

44150 Ancenis Cedex - France

Tel: +33 (0)2 40 09 10 11 - Fax: +33 (0)2 40 09 10 97

www.manitou.com



This publication provides a description of the configuration versions and options for Manitou products, which may differ for equipment. The equipment presented in this brochure may be part of a series, as an option, or it may not be available, depending on the versions. Manitou reserves the right, at any time and without notice, to amend the specifications described and represented. The specifications provided do not bind the manufacturer. For more details, please contact your Manitou agent. This is not a contractually binding document. The presentation of the products is not contractually binding. List of specifications non-exhaustive. The logos as well as the visual identity of the company are owned by Manitou and cannot be used without authorisation. All rights reserved. The photos and diagrams contained in this brochure are only provided for consultation and information purposes.

MANITOU BF SA - Limited company with board of directors - Share capital: 39,668,399 euros - 857 802 508 RCS Nantes